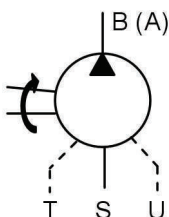
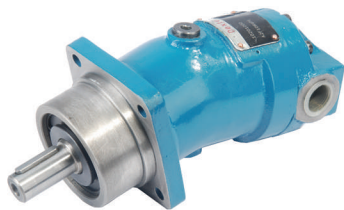




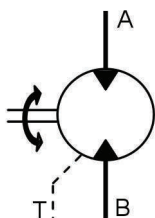
## PISTON PUMPS WITH CONSTANT FLOW AND BEND AXIS DESIGN



D-A2F	displacement cc/rev	flow (1500 rpm) lt/min.	working pressure bar		min-max. speed (rpm)	regulation type
			continuous	peak		
D-A2F 10 R4/P1	9,40	14,10	300	350	0-4700	with constant flow
D-A2F 12 R4/P1	11,60	17,40	300	350	0-3750	with constant flow
D-A2F 23 R3P4	22,70	34,05	300	350	0-3750	with constant flow
D-A2F 28 R3P4	28,10	42,15	300	350	0-2800	with constant flow
D-A2F 45 R1P3	44,30	66,45	300	350	0-2360	with constant flow
D-A2F 55 R1P3	54,80	82,20	300	350	0-2360	with constant flow
D-A2F 63 R2P3	63,00	94,50	300	350	0-2550	with constant flow
D-A2F 80 R2P3	80,00	120,00	300	350	0-2120	with constant flow
D-A2F 107 R1P3	107,00	160,50	300	350	0-1900	with constant flow
D-A2F 125 R2P3	125,00	187,50	300	350	0-2120	with constant flow
D-A2F 160 R2P3	160,00	240,00	300	350	0-1650	with constant flow
D-A2F 250 R5P2	250,00	375,00	300	350	0-1450	with constant flow
D-A2F 500	500,00	750,00	300	350	0-1200	with constant flow

- ▶ A2F series pumps exist with keyed shaft on our atock (spline shaft pumps is still in production and can be delivered at order)
- ▶ Long life because of choke type piston.
- ▶ Because of ball plate with pistons very very long lifetime.
- ▶ More information can be find at [www.hidrosam.com](http://www.hidrosam.com).
- ▶ A2F 200,A2F 355,A2F 500 can be delivered at order.
- ▶ Quiet and long life because of low angle oblique axis.

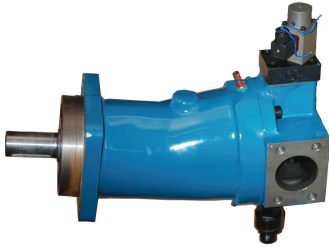
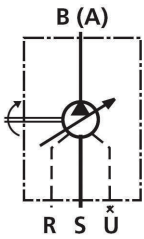
## PISTON MOTORS WITH CONSTANT FLOW AND BEND AXIS DESIGN



D-A2F	displacement cc/rev	flow (1500 rpm) lt/min.	working pressure bar		min-max. speed (rpm)	torque constant Nm/bar
			continuous	peak		
D-A2F 23 W3Z2	22,7	32,92	300	350	0-3750	0,36
D-A2F 28 W3Z2	28,1	40,75	300	350	0-2800	0,445
D-A2F 45 W1Z2	44,3	64,24	300	350	0-2360	0,725
D-A2F 55 W1/2Z2	54,8	79,46	300	350	0-2360	0,874
D-A2F 63 W2Z2	63	91,35	300	350	0-2550	1
D-A2F 80 W2Z2	80	116,00	300	350	0-2120	1,27
D-A2F 107 W2Z2	107	155,15	300	350	0-1900	1,7
D-A2F 125 W2Z2	125	181,25	300	350	0-2120	1,99
D-A2F 160 W2Z2	160	232,00	300	350	0-1650	2,54

- ▶ The torque of A2F45 motor at the 200 bar =200 bar x 0,725 Nm/bar=145 Nm.
- ▶ A2f series has spline shaft (the motor with keyed shaft be delivered when it order).
- ▶ Long life because of choke type piston.
- ▶ High performance because of ball Plate with rotary grup.
- ▶ More information can be find at [www.hidrosam.com](http://www.hidrosam.com).
- ▶ A2F 200,A2F 355,A2F 500 can be delivered of order.
- ▶ Quiet and long life because of low angle oblique axis.

**PUMPS WITH CURVED AXIS VARIABLE FLOW PISTONS**



**D-A7V**

D-A7V58 LV 1RPFMO / 7,5 KW 1.450 RPM/MIN Piston Pump open circuit	58	87,00	300	350	2850	LV+MA
D-A7V78 LV 1RPFMO / 11 KW 1.450 RPM/MIN Piston Pump open circuit	78	117,00	300	350	2540	LV+MA
D-A7V107 LV 1RPFMO - 37 KW / 1450 RPM Piston Pump open circuit	107	160,50	300	350	1900	LV+MA
D-A7V117 LV 1RPFMO / 22 KW 1.450 RPM/MIN Piston Pump open circuit	117	175,50	300	350	2240	LV+MA
D-A7V117 DR 1RPFMO Piston Pump open circuit	117	175,50	300	350	2240	DR+MA
D-A7V117 EP 1RPFMO Piston Pump open circuit ELECTRONIC CARD NOT INCLUDED	117	175,50	300	350	2240	EP+MA
D-A7V160 LV 1RPFMO-37KW Piston Pump open circuit	160	240,00	300	350	1650	LV+MA
D-A7V160 DR 1RPFMO Piston Pump open circuit	160	240,00	300	350	1650	DR+MA
D-A7V160 EP 1RPFMO Piston Pump open circuit ELECTRONIC CARD NOT INCLUDED	160	240,00	300	350	1650	EP+MA
D-A7V 250 HD / LV / DR / MA Piston Pump open circuit	250	375,00	300	350	1400	
D-A7V 500 HD / LV / DR / MA Piston Pump open circuit	500	750,00	300	350	1120	

displacement cc/rev	flow (1500 rpm) lt/min.	working pressure bar		max. speed (rpm)	regulation type
		continuous	peak		
58	87,00	300	350	2850	LV+MA
78	117,00	300	350	2540	LV+MA
107	160,50	300	350	1900	LV+MA
117	175,50	300	350	2240	LV+MA
117	175,50	300	350	2240	DR+MA
117	175,50	300	350	2240	EP+MA
160	240,00	300	350	1650	LV+MA
160	240,00	300	350	1650	DR+MA
160	240,00	300	350	1650	EP+MA
250	375,00	300	350	1400	
500	750,00	300	350	1120	

- LV Constant power control
- DR Constant pressure control
- EP Electrical control
- HD Hydraulic control
- MA Manual control

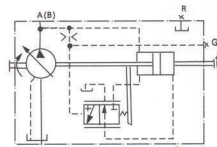
MA manual control is available as standard in all for the pumps

A7V Series 20,28,40,55,58,78,80,107,117,160,250,355,500 cc pumps can be delivered of order

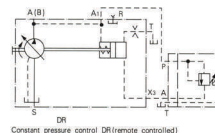
Additional to the standard types below special coded pumps can be delivered at order

More information can be found at [www.hidosam.com](http://www.hidosam.com)

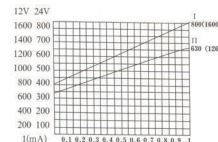
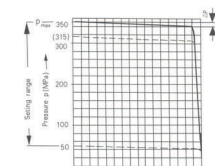
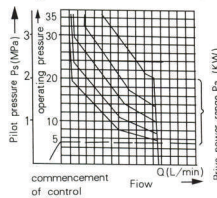
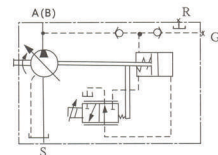
LV CONTROL



DR CONTROL



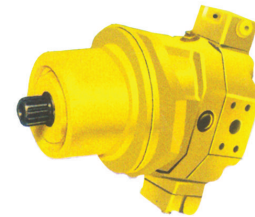
EP CONTROL



**PISTON MOTORS WITH VARIABLE FLOW**

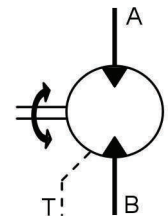
**D-A6V**

	displacement Vgmax cc/rev	max. power kW	working pressure bar		max. speed (rpm)	torque constant Nm/bar
			continuous	peak		
D-A6V 28 HD/HS/HA/DA/ES/EP/MO/MA	28,10	78,00	300	350	6250	44,63
D-A6V 55 HD/HS/HA/DA/ES/EP/MO/MA	54,80	120,00	300	350	5000	87,01
D-A6V 80 HD/HS/HA/DA/ES/EP/MO/MA	80	156,00	300	350	5000	127,5
D-A6V 107 HD/HS/HA/DA/ES/EP/MO/MA	107	187,00	300	350	5000	169,7
D-A6V 160 HD/HS/HA/DA/ES/EP/MO/MA	160	247,00	300	350	5000	254,1
D-A6V 225 HD/HS/HA/DA/MA	225	309,00	300	350	5000	357,1
D-A6V 500 HD/HS/HA/MA	500	507,00	300	350	2500	795,77



"HD;pilot pressure control variable flow- HS; pilot control variable flow- HA: automatic high-pressure- DA; pilot-controlled speed"  
"ES ;Double speed electrical control- EP; proportional control- MO: torque controlled MA; Manually controlled"

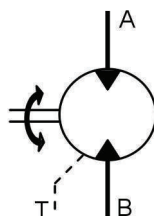
- 1- A6V series applications are designed for hydrostatic applications.
- 2- Vmax/Vmin :3,47 displacement is variable between infinity.
- 3- Because of using of a gear box it provides cost saving and can be used at low capacity.
- 4- This motor has got complete low unit power, good characteristic of departure, low inertia .
- 5- Long life because of special strong design.



**PISTON MOTORS WITH FIXED DISPLACEMENT**

**D-A2FE**

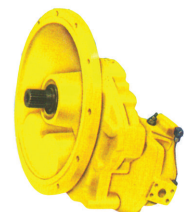
D-A2FE 107 /W70A11  
D-A2FE 107 /W70Z11



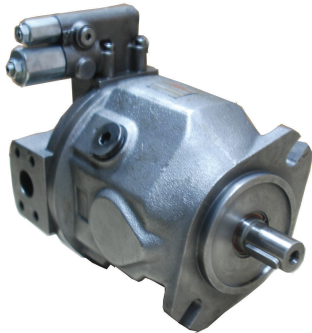
**DOUBLE-PISTON PUMP WITH VARIABLE FLOW**

**D-A8V**

D-A8V 107 SR 1.1  
D-A8V 107 SR 1.2  
D-A8V 107 SR 3



**PISTON PUMPS WITH VARIABLE FLOW AND SWASH PLATE**

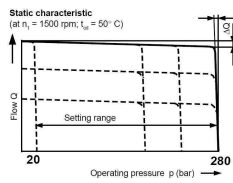
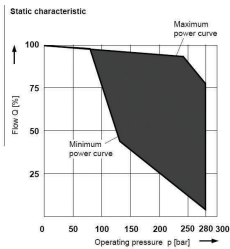
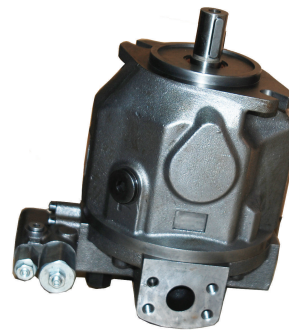
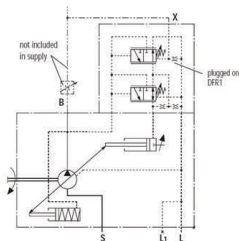
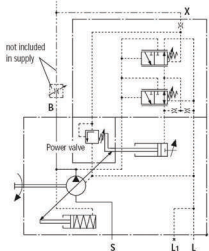


**D-A10VO**

	displacement cc/rev	flow (1500 rpm) lt/min.	max. working pressure (bar)		min-max. speed (rpm)	regulation type
			continuous	peak		
D-A10VO 28 DFR/31R PSC62N00	28,00	40,60	280	350	3000	DFR
D-A10VO 45 DFR/31R PSC62N00	45,00	65,25	280	350	2600	DFR
D-A10VO 71 DFR/31R PSC62N00	71,00	102,95	280	350	2200	DFR
D-A10VO 100 DFR/31R PSC62N00	100,00	145,00	280	350	2000	DFR
D-A10VO 28 DFLR/31R PSC62N00/5,5KW	28,00	40,60	280	350	3000	DFLR
D-A10VO 45 DFLR/31R PSC62N00/11KW	45,00	65,25	280	350	2600	DFLR
D-A10VO 71 DFLR/31R PSC62N00/22KW	71,00	102,95	280	350	2200	DFLR
D-A10VO 100 DFLR/31R PSC62N00/15KW	100,00	145,00	280	350	2000	DFLR
D-A10VO 28 DFR/31L PSC62N00	28,00	40,60	280	350	3000	DFR
D-A10VO 45 DFR/31L PSC62N00	45,00	65,25	280	350	2600	DFR
D-A10VO 71 DFR/31L PSC62N00	71,00	102,95	280	350	2200	DFR
D-A10VSO 18 DFR/31R PPA12N00	18,00	26,10	280	350	3300	DFR
D-A10VSO 28 DFR/31R PPA12N00	28,00	40,60	280	350	3000	DFR
D-A10VSO 45 DFR/31R PPA12N00	45,00	65,25	280	350	2600	DFR
D-A10VSO 71 DFR/31R PPA12N00	71,00	102,95	280	350	2200	DFR
D-A10VSO 100 DFR/31R PPA12N00	100,00	145,00	280	350	2000	DFR
D-A10VSO 140 DFR/31R PPB12N00	140,00	203,00	280	350	1800	DFR
D-A10VSO 28 DFLR/31R PSC62N00/5,5KW	28,00	40,60	280	350	3000	DFLR
D-A10VSO 45 DFLR/31R PSC62N00/11KW	45,00	65,25	280	350	2600	DFLR
D-A10VSO 71 DFLR/31R PSC62N00/22KW	71,00	102,95	280	350	2200	DFLR
D-A10VSO 100 DFLR/31R PSC62N00/15KW	100,00	145,00	280	350	2000	DFLR

DFLR Model ;  
Pressure, flow and  
power regulation

DFR Model ;  
Pressure and flow  
regulation



- ▶ PSC = Splined Shaft
- ▶ PPA = Keyed Shaft
- ▶ More information at [www.hidrosam.com](http://www.hidrosam.com)

- 1-Variable flow because of swash plate design.
  - 2-Flow is depending on the directly proportional the rotation of electric motor.by changing the inclination angle of the disc flow and pressure regulation is provided
  - 3-Making the power regulation at the DFLR type allows using smaller electric motor
- Tandem Pumps can be delivered at order

**SPARE PARTS WITH VARIABLE FLOW PISTON PUMP FOR OBLIQUE PRINCIPLE AXES**

**D-A10VO**  
Rotary pump groups

- D-A10VO 18 ROTARY GROUP RH
- D-A10VO 28 ROTARY GROUP RH
- D-A10VO 45 ROTARY GROUP RH
- D-A10VO 71 ROTARY GROUP RH
- D-A10VO 100 ROTARY GROUP RH
- D-A10VO 140 ROTARY GROUP RH



# D-A10VO

DISTRIBUTION PLATE  
( VALVE PLATE )

- D-A10VO 18 VALVE PLATE
- D-A10VO 28 VALVE PLATE
- D-A10VO 45 VALVE PLATE
- D-A10VO 71 VALVE PLATE
- D-A10VO 100 VALVE PLATE
- D-A10VO 140 VALVE PLATE



# D-A10VO

PISTONS  
(9 unit :1 set)

- D-A10VO 18 PISTON
- D-A10VO 28 PISTON
- D-A10VO 45 PISTON
- D-A10VO 71 PISTON
- D-A10VO 100 PISTON
- D-A10VO 140 PISTON



# D-A10VO

DFLR ( YOKE )  
31 design

- D-A10VO 18 YOKE ( 31 design )
- D-A10VO 28 YOKE ( 31 design )
- D-A10VO 45 YOKE ( 31 design )
- D-A10VO 71 YOKE ( 31 design )
- D-A10VO 100 YOKE ( 31 design )
- D-A10VO 140 YOKE ( 31 design )



# D-A10VO

SADDLE BEARING  
1 unit lunate yellow,

There are 2 unit in each pump 31 design

- D-A10VO 18 SADDLE BEARING
- D-A10VO 28 SADDLE BEARING
- D-A10VO 45 SADDLE BEARING
- D-A10VO 71 SADDLE BEARING
- D-A10VO 100 SADDLE BEARING
- D-A10VO 140 SADDLE BEARING

# D-A10VO

SEAL KIT  
31 DESIGN

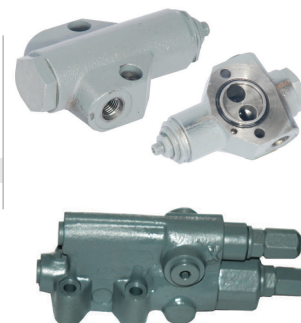
- D-A10VO 18 SEAL KIT
- D-A10VO 28 SEAL KIT
- D-A10VO 45 SEAL KIT 31 design
- D-A10VO 71 SEAL KIT
- D-A10VO 100 SEAL KIT
- D-A10VO 140 SEAL KIT



# D-A10VO

regulator  
bodies

- D-DFR REGULATOR
- D-DFLR REGULATOR



## VANE PUMPS WITH CONSTANT FLOW

D-V V TYPE (CONSTANT FLOW)	displacement	displacement	flow	working	min-max.	regulation	
	gallon /rev	cc/rev.	( 1500 rpm ) lt/min.				
D-V10-1B-1B-001C-20	1	3	5,60	172	1000-4800	with constant flow	
D-V10-1B-2B-001C-20	2	6	9,30	172	1000-4500	with constant flow	
D-V10-1B-3B-001C-20	3	9	14,00	172	1000-4000	with constant flow	
D-V10-1B-4B-001C-20	4	13	19,00	172	1000-3400	with constant flow	
D-V10-1B-5B-001C-20	5	16	23,00	172	1000-3200	with constant flow	
D-V10-1B-6B-001C-20	6	19	28,00	172	1000-3000	with constant flow	
D-V10-1B-7B-001C-20	7	22	32,00	172	1000-2800	with constant flow	
D-V20-1B-8B-001C-11 EN 1000	8	25	37,00	172	1000-2800	with constant flow	
D-V20-1B-9B-001C-11 EN 1000	9	28	41,00	172	1000-2800	with constant flow	
D-V20-1B-10B-001C-11 EN 1000	10	32	46,00	172	1000-2500	with constant flow	
D-V20-1B-11B-001C-11 EN 1000	11	35	50,00	172	1000-2500	with constant flow	
D-V20-1B-12B-001C-11 EN 1000	12	38	54,00	172	1000-2400	with constant flow	
D-V20-1B-13B-001C-11 EN 1000	13	41	59,00	172	1000-2400	with constant flow	
D-20V 05A-001C-22R	5	16	26,00	206	1000-1800	with constant flow	
D-20V 08A-001C-22R	8	25	39,00	206	1000-1800	with constant flow	
D-20V 12A-001C-22R	12	38	58,00	172	1000-1800	with constant flow	
D-20V 14A-001C-22R	14	44	65,00	138	1000-1800	with constant flow	
D-25V-12A-001C-22R	12	38	58,00	206	1000-1800	with constant flow	
D-25V-14A-001C-22R	14	44	65,00	206	1000-1800	with constant flow	
D-25V-17A-001C-22R	17	54	79,00	206	1000-1800	with constant flow	
D-25V-19A-001C-22R	19	60	88,00	172	1000-1800	with constant flow	
D-25V-21A-001C-22R	21	66	98,00	159	1000-1800	with constant flow	
D-35V 25A-001A-22R	25	79	118,00	172	1000-1800	with constant flow	
D-35V 30A-001A-22R	30	95	140,00	172	1000-1800	with constant flow	
D-35V 35A-001A-22R	35	110	164,00	172	1000-1800	with constant flow	
D-35V 38A-001A-22R	38	120	177,00	172	1000-1800	with constant flow	
D-45V 42A-086A-22R	42	132	200,00	172	1000-1800	with constant flow	
D-45V 47A-086A-22R	47	150	219,00	172	1000-1800	with constant flow	
D-45V 50A-086A-22R	50	158	234,00	172	1000-1800	with constant flow	
D-45V 57A-086A-22R	57	180	265,00	172	1000-1800	with constant flow	
D-45V 60A-086A-22R	60	189	284,00	172	1000-1800	with constant flow	

## CARDRIDGE

### D-V

V TYPE (CONSTANT FLOW)



D-Cardridge kit V 10 ( 1/2/3/4/5/6/7 GPM )

D-Cardridge kit V 20 ( 6/7/8/9/10/11/12/13 GPM )

D-Cardridge kit 20 V ( 5/8/9/11/12/14 GPM )

D-Cardridge kit 25 V ( 12/14/17/19/21 GPM )

D-Cardridge kit 35 V ( 21/25/30/35/38 GPM )

D-Cardridge kit 45 V ( 42/47/50/57/60 GPM )

## M Maxtor VANE PUMPS WITH CONSTANT FLOW

### D-PV2

(CONSTANT FLOW)

	shaft diameter	displacement	flow	working pressure	min-max. Hızı	regulation
	mm.	cc/rev.	( 1500 rpm) lt/min.	(bar)	(rpm)	type
D-PV2R1-6-F-1-R-D	Ø 19,05	5,80	8,41	210	750-1800	with constant flow
D-PV2R1-8-F-1-R-D	Ø 19,05	8,00	11,60	210	750-1800	with constant flow
D-PV2R1-10-F-1-R-D	Ø 19,05	9,40	13,63	210	750-1800	with constant flow
D-PV2R1-12-F-1-R-D	Ø 19,05	12,20	17,69	210	750-1800	with constant flow
D-PV2R1-14-F-1-R-D	Ø 19,05	13,70	19,87	210	750-1800	with constant flow
D-PV2R1-17-F-1-R-D	Ø 19,05	16,60	24,07	210	750-1800	with constant flow
D-PV2R1-19-F-1-R-D	Ø 19,05	18,60	26,97	210	750-1800	with constant flow
D-PV2R1-23-F-1-R-D	Ø 19,05	22,70	32,92	210	750-1800	with constant flow
D-PV2R1-25-F-1-R-D	Ø 19,05	25,30	36,69	210	750-1800	with constant flow
D-PV2R2-33-F-1-R-D	Ø 25,40	33,30	48,29	210	600-1800	with constant flow
D-PV2R2-41-F-1-R-D	Ø 25,40	41,30	59,89	210	600-1800	with constant flow
D-PV2R2-47-F-1-R-D	Ø 25,40	47,20	68,44	210	600-1800	with constant flow
D-PV2R2-53-F-1-R-D	Ø 25,40	52,50	76,13	210	600-1800	with constant flow
D-PV2R2-59-F-1-R-D	Ø 25,40	58,20	84,39	210	600-1800	with constant flow
D-PV2R2-65-F-1-R-D	Ø 25,40	64,70	93,82	210	600-1800	with constant flow
D-PV2R3-76-F-1-R-D	Ø 31,75	76,00	110,20	210	600-1800	with constant flow
D-PV2R3-94-F-1-R-D	Ø 31,75	93,60	135,72	210	600-1800	with constant flow
D-PV2R3-116-F-1-R-D	Ø 31,75	115,60	167,62	210	600-1800	with constant flow



## M Maxtor VARIABLE DISPLACEMENT VANE PUMP

### M-PV 70

maxtor with variable flow vane pump

	displacement	flow	working pressure		min-max. Hızı	regulation
	cc/rev	(1500 rpm) lt/min.	continuous	peak	(rpm)	type
M-PV 70-G-6,6 / 9,6	6,60	9,57	60	70	800-1800	DR
M-PV 70-G-8,3 / 12	8,30	12,04	60	70	800-1800	DR
M-PV 70-G-11,1 / 16,1	11,10	16,10	60	70	800-1800	DR
M-PV 70-G-16,6 / 24,1	16,60	24,07	60	70	800-1800	DR
M-PV 70-G-22,2 / 32,2	22,20	32,19	60	70	800-1800	DR



DR Control prevent the slog on of motor when it comes suitable pressure which makes flow rate of zero when it's over and prevent heating of the oil.



## M-PV 70

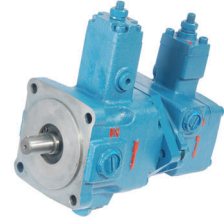
maxtor constant flow tandem vane pump

	front pump cc/rev.	rear pump cc/rev.	working pressure (bar)		min-max. speed (rpm)	regulation type
			front	rear		
M-PV 70 G 16.6/24.1 + 1,1 CM <sup>3</sup> GEAR PUMP"	16,60	1,00	60	200	3000	DR type
M-PV 70 G 16.6/24.1 + 2 CM <sup>3</sup> GEAR PUMP"	16,60	2,00	60	200	3000	DR type
M-PV 70 G 16.6/24.1 +4.2 CM <sup>3</sup> GEAR PUMP"	16,60	4,20	60	200	3000	DR type

## M-PV 70

maxtor constant flow tandem vane pump

	front pump cc/rev.	rear pump cc/rev.	working pressure (bar)		min-max. speed (rpm)	regulation type
			front	rear		
M-PV 70 G16.6/24.1 + PV 70-G 6.6/9.6"	16,60	6,60	60	60	3000	DR type
M-PV 70 G 16.6/24.1+PV 70-G-8,3 / 12"	16,60	8,30	60	60	3000	DR type
M-PV 70 G 16.6/24.1 + PV 70-G-11,1 / 16,1"	16,60	11,10	60	60	3000	DR type



## M Maxtor GEAR PUMPS

## M-RGP

maxtor Gear Pump

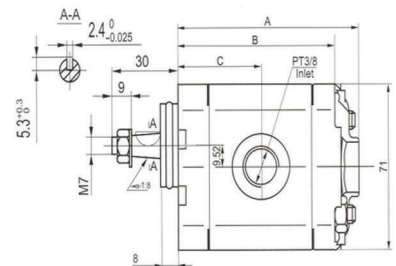
	displacement cc/rev	flow (1500 rpm) lt/min.	working pressure (bar)		min-max. speed (rpm)	regulation type
			continuous	peak		
M-maxTOR RGP-F111-RZ tapered shaft, inlet and outlet at sides	1,10	1,60	200	250	6.000	with constant flow
M-maxTOR RGP-F116-RZ tapered shaft, inlet and outlet at sides	1,60	2,32	200	250	6.000	with constant flow
M-maxTOR RGP-F121-RZ tapered shaft, inlet and outlet at sides	2,10	3,05	200	250	6.000	with constant flow
M-maxTOR RGP-F132-RZ tapered shaft, inlet and outlet at sides	3,20	4,64	200	250	5.000	with constant flow
M-maxTOR RGP-F142-RZ tapered shaft, inlet and outlet at sides	4,20	6,09	200	250	4.000	with constant flow



## M-RGP

	A (mm.)	B (mm.)	C (mm.)
M-RGP-111-RZ	74	62	33
M-RGP-116-RZ	76	64	34
M-RGP-121-RZ	78	66	35
M-RGP-132-RZ	82	70	37
M-RGP-142-RZ	86	74	39

(0,6) - (1,3) - (1,8) - (2,7) - (4,8) - (5,8) -(8 ,0) cm<sup>3</sup>/rev.  
models are in production can be delivered at order



## CHECK VALVES

## D-S

line type check valves	connection type	thread size	max flow lt/min	max. pressure (bar)	opening pressure (bar)
D-S 6 A1.0	line type	1/4"	18	315	1
D-S 8 A1.0	line type	3/8"	36	315	1
D-S 10 A1.0	line type	1/2"	60	315	1
D-S 15 A1.0	line type	3/4"	150	315	1
D-S 20 A1.0	line type	1"	250	315	1
D-S 25 A1.0	line type	1 1/4"	350	315	1
D-S 30 A1.0	line type	1 1/2"	450	315	1
D-S 20 A5.0	line type	1"	250	315	5
D-S 30 A5.0	line type	1 1/2"	450	315	5





## D-RVP

PLATE TYPE CHECK VALVES	connection type	size	max flow lt/min	max. pressure (bar)	opening pressure (bar)
D-RVP 6-1X/	Plate type	NG 6	40	315	0,5
D-RVP 8-1X/	Plate type	NG 8	70	315	0,5
D-RD-VP 10-1X/	Plate type	NG 10	120	315	0,5
D-RVP 12-1X/	Plate type	NG 12	160	315	0,5
D-RVP 16-1X/	Plate type	NG 16	240	315	0,5
D-RVP 20-1X/	Plate type	NG 20	440	315	0,5
D-RVP 25-1X/	Plate type	NG 25	600	315	0,5

Other types at request

## D-M-SR

CARTRIDGE TYPE CHECK VALVES

connection type	size	max flow lt/min	max. pressure (bar)	opening pressure (bar)
D-M-SR 8 KE05-1X	built-in type NG 8	35	315	0,5
D-M-SR 10 KE05-1X	built-in type NG 10	50	315	0,5
D-M-SR 15 KE05-1X	built-in type NG 15	120	315	0,5
D-M-SR 20 KE05-1X	built-in type NG 20	200	315	0,5
D-M-SR 25 KE05-1X	built-in type NG 25	300	315	0,5
D-M-SR 30 KE05-1X	built-in type NG 30	400	315	0,5

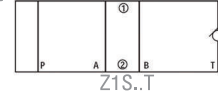
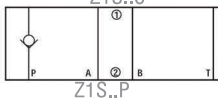
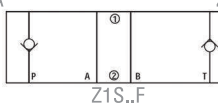
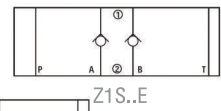
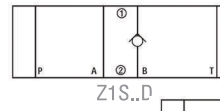
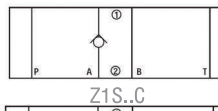
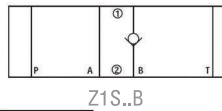
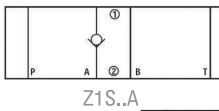


## D-Z1S

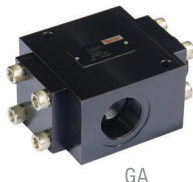
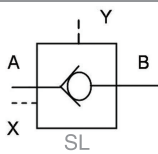
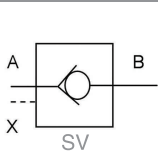
SANDWICH PLATE CHECK VALVES

connection type	size	max flow lt/min	max. pressure (bar)	opening pressure (bar)
D-Z1S 6 P1-3X/V	Plate type NG 6	40	315	0,5
D-Z1S 6 T1-3X/V	Plate type NG 6	40	315	0,5
D-Z1S 6 F1-3X/V	Plate type NG 6	40	315	0,5
D-Z1S 10 P1-3X/V	Plate type NG 10	100	315	0,5
D-Z1S 10 F1-3X/V	Plate type NG 10	100	315	0,5

The model of A line entrance and B line entrance, A line at the exit, B line at the exit, A and B line at the exit can be delivered at order.



## PILOT OPERATED CHECK VALVES



## D-SV-SL

PILOT OPERATED CHECK VALVES

connection type	thread size	max flow lt/min	max. pressure (bar)	Is there any leaking line ?
D-SV 10 GA1-4X	line type 1/2"	120	315	no
D-SV 20 GA1-4X	line type 1"	300	315	no
D-SV 30 GA1-4X	line type 1 1/2"	500	315	no
D-SL 10 GA1-4X	line type 1/2"	120	315	yes
D-SL 20 GA1-4X	line type 1"	300	315	yes
D-SL 30 GA1-4X	line type 1 1/2"	500	315	yes
SV 10 PA1-4X	Plate type NG 10	120	315	no
SV 20 PA1-4X	Plate type NG 20	300	315	no
SV 30 PA1-4X	Plate type NG 30	500	315	no
SL 10 PA1-4X	Plate type NG 10	120	315	yes
SL 20 PA1-4X	Plate type NG 20	300	315	yes
SL 30 PA1-4X	Plate type NG 30	500	315	yes

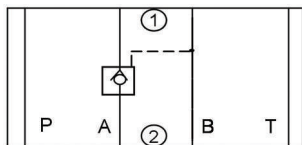
## D-Z2S

SANDWICH PLATE TYPE PILOT OPERATED CHECK VALVES

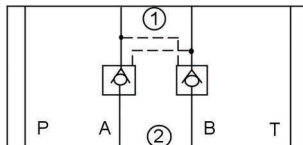
connection type	size	max. flow lt/min	max. pressure (bar)	locking line	opening pressure (bar)
D-Z2S 6-1-6X/ NEW SERIES	sandwich plate NG 6	40	315	A-B	1,5
D-Z2S 6A-1-6X/ NEW SERIES	sandwich plate NG 6	40	315	A	1,5
D-Z2S 6B-1-6X/ NEW SERIES	sandwich plate NG 6	40	315	B	1,5
D-Z2S 10-1-3X/ NEW SERIES	sandwich plate NG 10	100	315	A-B	1,5
D-Z2S 10A-1-3X/ NEW SERIES	sandwich plate NG 10	100	315	A	1,5
D-Z2S 10B-1-3X/ NEW SERIES	sandwich plate NG 10	100	315	B	1,5
D-Z2S 16-1-4X NEW SERIES	sandwich plate NG 16	200	315	A-B	2,5
D-Z2S 22-1-5X/V NEW SERIES	sandwich plate NG 22-25	360	315	A-B	2,5



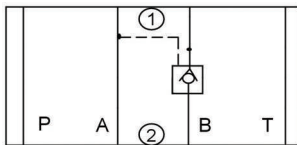




Z2S..A



Z2S



Z2S..B



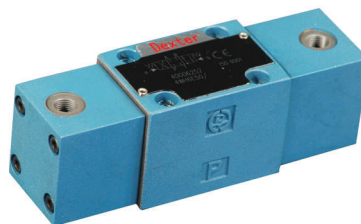
**PILOT OPERATED CHECK VALVES**

**D-4WH**

HYDRAULIC OPERATED DIRECTIONAL CONTROL

	spool type	size	max flow lt/min	max. pressure (P,A,B) bar	operation type
D-4WH 6 E-5X/	E type	NG 6-1/4"	120	315	hydraulic operated
D-4WH 6 D-5X/	D type	NG 6-1/4"	120	315	hydraulic operated

NG10, NG16, NG25 and NG32 types can be delivered at order.



**MECHANICAL OPERATED DIRECTIONAL CONTROL VALVES**



**D-4WMM-4WMMU**  
MECHANICAL OPERATED DIRECTIONAL CONTROL

	spool type	size	max flow lt/min	max. pressure (P,A,B) bar	operation type
D-4 WMM 6 D-5X/	D type	NG 6-1/4"	60	315	with wheel button
D-4WMMU 6 D-5X/	D type	NG 6-1/4"	60	315	with wheel button
D-4WMM 6 E-5X/	E type	NG 6-1/4"	60	315	with wheel button
D-4WMMU 6 E-5X/	E type	NG 6-1/4"	60	315	with wheel button
D-4WMM 10 D-3X/	D type	NG 10-1/2"	120	315	with wheel button
D-4WMMU 10 D-3X/	D type	NG 10-1/2"	120	315	with wheel button

U and R types can be converted to each other.

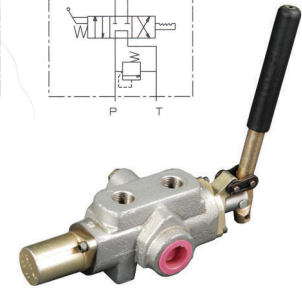
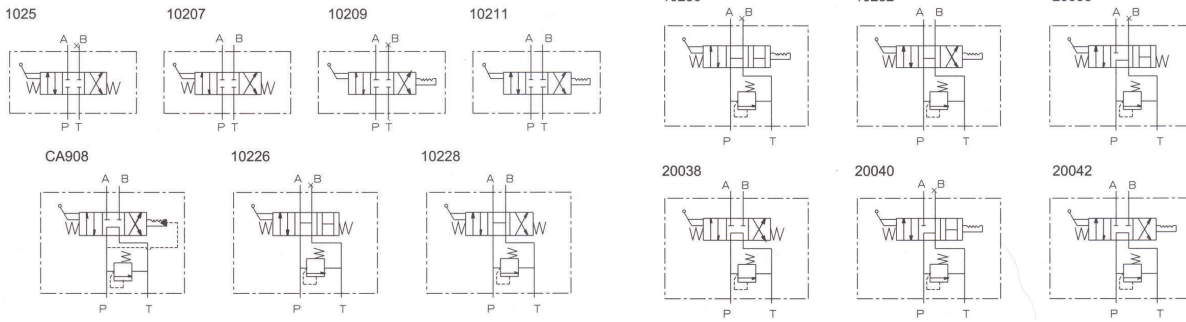
**HAND LEVER DIRECTIONAL CONTROL VALVES (industrial type)**

**D-4WMM**  
HAND LEVER DIRECTIONAL CONTROL VALVES

	spool type	size	max flow lt/min	max. pressure (P,A,B) bar	with detent spring return
D-4WMM 6 D-5X/F	D type	NG 6-1/4"	60	315	with detent
D-4WMM 6 D-5X/	D type	NG 6-1/4"	60	315	spring return
D-4WMM 6 J-5X/F	J type	NG 6-1/4"	60	315	with detent
D-4WMM 6 J-5X/	J type	NG 6-1/4"	60	315	spring return
D-4WMM 6 E-5X/F	E type	NG 6-1/4"	60	315	with detent
D-4WMM 6 E-5X/	E type	NG 6-1/4"	60	315	spring return
D-4WMM 6 G-5X/F	G type	NG 6-1/4"	60	315	with detent
D-4WMM 6 G-5X/	G type	NG 6-1/4"	60	315	spring return
D-4WMM 6 H-5X/	H type	NG 6-1/4"	60	315	spring return
D-4WMM 10 D-3X/F	D type	NG 10-1/2"	100	315	with detent
D-4WMM 10 D-3X/	D type	NG 10-1/2"	100	315	spring return
D-4WMM 10 J-3X/F	J type	NG 10-1/2"	100	315	with detent
D-4WMM 10 J-3X/	J type	NG 10-1/2"	100	315	spring return
D-4WMM 10 E-3X/F	E type	NG 10-1/2"	100	315	with detent
D-4WMM 10 E-3X/	E type	NG 10-1/2"	100	315	spring return
D-4WMM 10 G-3X/F	G type	NG 10-1/2"	100	315	with detent
D-4WMM 10 G-3X/	G type	NG 10-1/2"	100	315	spring return



**HAND LEVER DIRECTIONAL CONTROL VALVES (Mobile type)**



<b>D-BH10C</b> HAND LEVER DIRECTIONAL CONTROL VALVES	spool type	size	max flow lt/min	max. pressure (P,A,B) bar	with detent spring return
D-BH10H-C-908 control arm	908	1/2"	80	250	hydraulic return

Other types can be delivered at order.

**HYDRAULIC VALVE SELENOIDS**



**SELENOIDS**

	used with?	solenoid voltage power	example code which can be used together with
NG 6 valve solenoid 5X / 12V DC old series dry type 4 screw	NG5-6X/NG6-5X	12VDC-30W	4WE 6...-5X/AG12NZ4
NG 6 valve solenoid 5X / 24V DC old series dry type 4 screw	NG5-6X/NG6-5X	24VDC-30W	4WE 5...-6X/AG24NZ4
NG 6 valve solenoid 5X / 110V AC old series dry type 4 screw	NG5-6X/NG6-5X	110VAC-30W	4WE 6...-5X/AW110NZ4
NG 6 valve solenoid 5X / 220V AC old series dry type 4 screw	NG5-6X/NG6-5X	220VAC-30W	4WE 5...-6X/AW24NZ4



**SELENOIDS**

	used with?	solenoid voltage power	example code which can be used together with
NG 6 valve solenoid 6X / 12V DC circle shaped oiled type, screwed to housing	NG6-6X	12VDC-30W	4WE 6...-6X/EG12N9Z4
NG 6 valve solenoid 6X / 24V DC circle shaped oiled type, screwed to housing	NG6-6X	24VDC-30W	4WE 6...-6X/EG24N9Z4
NG 6 valve solenoid 6X / 110V AC circle shaped oiled type, screwed to housing	NG6-6X	110VAC-30W	4WE 6...-6X/EW110N9Z4
NG 6 valve solenoid 6X / 220V AC circle shaped oiled type, screwed to housing	NG6-6X	220VAC-30W	4WE 6...-6X/EW220N9Z4
NG 10 valve solenoid 3X / 12V DC circle shaped oiled type, screwed to housing	NG10-3X	12VDC-30W	4WE 10...-3X/CG12N9Z4
NG 10 valve solenoid 3X / 24V DC circle shaped oiled type, screwed to housing	NG10-3X	24VDC-30W	4WE 10...-3X/CG24N9Z4
NG 10 valve solenoid 3X / 110V AC circle shaped oiled type, screwed to housing	NG10-3X	110VAC-30W	4WE 10 E...3X/CW110N9Z4
NG 10 valve solenoid 3X / 220V AC circle shaped oiled type, screwed to housing	NG10-3X	220VAC-30W	4WE 10 E...3X/CW220N9Z4

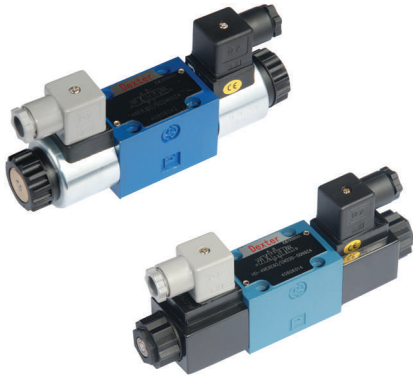
5X=50,51,52,53... 6X=60,61,62,63... 3X=30,31,32,33...

<b>ACY</b>	size /the number of seat	voltage	colour	type	technic details
ACY-1 TYPE 1-BK Z4 black aphotic sockets	Z4 -3 footed	-	black	broad	Standard hydraulic valve socket
ACY-1 TYPE 1-G Z4 GRI aphotic sockets	Z4 -3 footed	-	gray	broad	Standard hydraulic valve socket
ACY-1 TYPE 2 AC 220V Z5 light sockets	Z5 -3 footed	220VAC	transparent	broad	Standard hydraulic valve socket
ACY-1 TYPE 3 DC 24V Z5 light sockets	Z5 -3 footed	24VDC	transparent	broad	Standard hydraulic valve socket
ACY-1 TYPE 4 AC 220V Z5 light sockets with 4 feet	Z5 -3 footed	220VAC	transparent	broad	Standard hydraulic valve socket
ACY-1 TYPE 4 DC 24V Z5 light sockets with 4 feet	Z5 -3 footed	24VDC	transparent	broad	Standard hydraulic valve socket



**SOLENOID OPERATED DIRECTIONAL CONTROL VALVES**

<b>D-4 WE 5</b> SOLENOID OPERATED DIRECTIONAL CONTROL VALVES		spool type	size	max flow lt/min	max. pressure (P,A,B) bar	Voltage DC-AC
D-4WE 5 N-6.2/AG24N9Z4	D type	NG 5	12-14	250	24V - DC	
D-4WE 5 E-6.2/AG24N9Z4	E type	NG 5	12-14	250	24V - DC	
D-4WE 5 J-6.2/AG24N9Z4	J type	NG 5	12-14	250	24V - DC	



<b>D-4 WE ..SG</b> SOLENOID OPERATED DIRECTIONAL CONTROL VALVES		spool type	size	max flow lt/min	max. pressure (P,A,B) bar	Voltage DC-AC
4WE 6 E-6X/SG24N9Z4	E type	NG 6-1/4"	60	210	24V - DC	
4WE 6 J-6X/SG24N9Z4	J type	NG 6-1/4"	60	210	24V - DC	
4WE 6 G-6X/SG24N9Z4	G type	NG 6-1/4"	60	210	24V - DC	
4WE 6 H-6X/SG24N9Z4	H type	NG 6-1/4"	60	210	24V - DC	
4WE 6 HA-6X/SG24N9Z4	HA type	NG 6-1/4"	60	210	24V - DC	
4WE 6 D-6X/SG24N9Z4	D type	NG 6-1/4"	60	210	24V - DC	
4WE 6 J-6X/SW220N9Z4	J type	NG 6-1/4"	60	210	220V - AC	
4WE 6 E-6X/SW220N9Z4	E type	NG 6-1/4"	60	210	220V - AC	

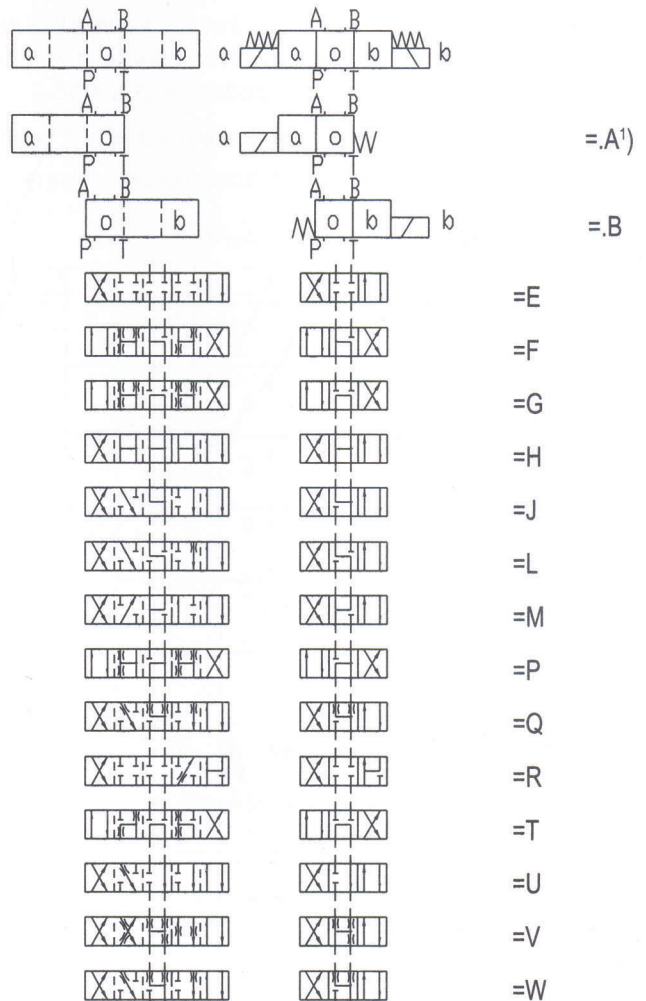
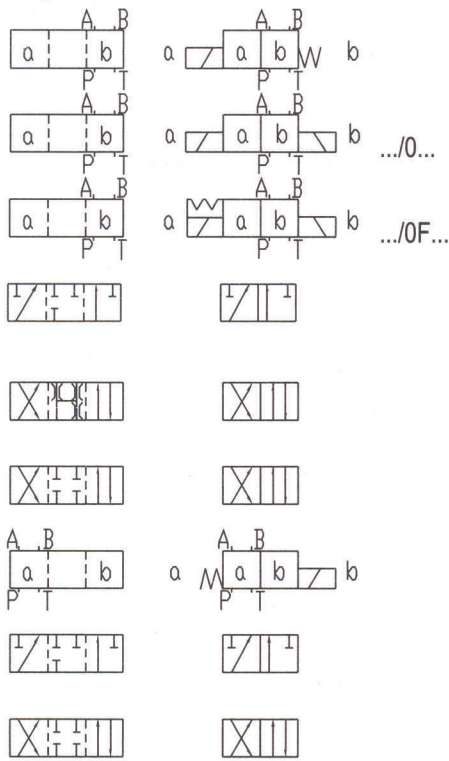
**HYDRAULIC VALVE SPOOL TYPES**

Spool E with switching position "a"

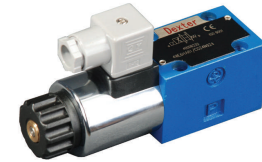
Ordering code ..EA..

Spool E with switching position "b"

Ordering code...EB...



<b>D-4 WE 6</b> SELENOID OPERATED DIRECTIONAL CONTROL VALVES		spool type	size	max flow lt/min	max. pressure (P,A,B) bar	Voltage DC-AC
D-3WE 6 A-6X/EG24N9Z4	A type	NG 6-1/4"	80	350	24V - DC	
D-3WE 6 B-6X/EG24N9Z4	B type	NG 6-1/4"	80	350	24V - DC	
D-3WE 6 B9-6X/EG24N9Z4	Pilot of DBW valves"	B type	NG 6-1/4"	80	24V - DC	
D-3WE 6 B-6X/EW220N9Z4	B type	NG 6-1/4"	80	350	220V - AC	
D-4WE 6 C-6X/EG24N9Z4	D type soft	NG 6-1/4"	80	350	24V - DC	
D-4WE 6 D-6X/EG24N9Z4	D type	NG 6-1/4"	80	350	24V - DC	
D-4WE 6 D-6X/EW110N9Z4	D type	NG 6-1/4"	80	350	110V - AC	
D-4WE 6 D-6X/EW220N9Z4	D type	NG 6-1/4"	80	350	220V - AC	
D-4WE 6 D-6X/OFEG24N9Z4	D type with detent	NG 6-1/4"	80	350	24V - DC	
D-4WE 6 D-6X/OFEW110N9Z4	D type with detent	NG 6-1/4"	80	350	110V - AC	
D-4WE 6 J-6X/EG12N9Z4	J type	NG 6-1/4"	80	350	24V - DC	
D-4WE 6 J-6X/EG24N9Z4	J type	NG 6-1/4"	80	350	24V - DC	
D-4WE 6 J-6X/EW110N9Z4	J type	NG 6-1/4"	80	350	110V - AC	
D-4WE 6 J-6X/EW220N9Z4	J type	NG 6-1/4"	80	350	220V - AC	
D-4WE 6 E-6X/EG12N9Z4	E type	NG 6-1/4"	80	350	24V - DC	
D-4WE 6 E-6X/EG24N9Z4	E type	NG 6-1/4"	80	350	24V - DC	
D-4WE 6 E-6X/EW110N9Z4	E type	NG 6-1/4"	80	350	110V - AC	
D-4WE 6 E-6X/EW220N9Z4	E type	NG 6-1/4"	80	350	220V - AC	
D-4WE 6 E-6X/EW24N9Z4	E type	NG 6-1/4"	80	350	24VAC CURRENT !!!	
D-4WE 6 E-6X/EG220N9Z4	E type	NG 6-1/4"	80	350	220VDC CURRENT !!!	
D-4WE 6 E-6X/EG24N10Z4	E type	NG 6-1/4"	80	350	24V - DC	
D-4WE 6 G-6X/EG24N10Z4	G type	NG 6-1/4"	15-80	350	24V - DC	
D-4WE 6 G-6X/EG12N9Z4	G type	NG 6-1/4"	15-80	350	24V - DC	
D-4WE 6 G-6X/EG24N9Z4	G type	NG 6-1/4"	15-80	350	24V - DC	
D-4WE 6 G-6X/EW220N9Z4	G type	NG 6-1/4"	15-80	350	220V - AC	
D-4WE 6 H-6X/EG24N9Z4	H type	NG 6-1/4"	80	350	24V - DC	
D-4WE 6 H-6X/EW220N9Z4	H type	NG 6-1/4"	80	350	220V - AC	
D-4WE 6 HA-6X/EG12N9Z4	HA type	NG 6-1/4"	80	350	24V - DC	
D-4WE 6 HA-6X/EG24N9Z4	HA type	NG 6-1/4"	80	350	24V - DC	
D-4WE 6 HA-6X/EW220N9Z4	HA type	NG 6-1/4"	80	350	220V - AC	
D-4WE 6 U-6X/EG24N9Z4	U type	NG 6-1/4"	80	350	24V - DC	
D-4WE 6 F-6X/EG24N9Z4	F type	NG 6-1/4"	15-80	350	24V - DC	
D-4WE 6 M-6X/EG24N9Z4	M type	NG 6-1/4"	80	350	24V - DC	
D-4WE 6 L-6X/EG24N9Z4	L type	NG 6-1/4"	80	350	24V - DC	
D-4WE 6 P-6X/EG24N9Z4	P type	NG 6-1/4"	80	15-350	24V - DC	
D-4WE 6 Q-6X/EG24N9Z4	Q type	NG 6-1/4"	80	350	24V - DC	
D-4WE 6 R-6X/EG24N9Z4	R type	NG 6-1/4"	80	350	24V - DC	
D-4WE 6 T-6X/EG24N9Z4	T type	NG 6-1/4"	15-80	350	24V - DC	
D-4WE 6 V-6X/EG24N9Z4	V type	NG 6-1/4"	15-80	350	24V - DC	
D-4WE 6 W-6X/EG24N9Z4	W type	NG 6-1/4"	80	350	24V - DC	
D-4WE 6 Y-6X/EG24N9Z4	Y type	NG 6-1/4"	80	350	24V - DC	
D-4WE 6 Y-6X/EW220N9Z4	Y type	NG 6-1/4"	80	350	220VDC CURRENT !!!	



NG6 24VDC-12VDC single solenoid



NG6 220VAC-110VAC single solenoid



NG6 24VDC-12VDC double solenoid



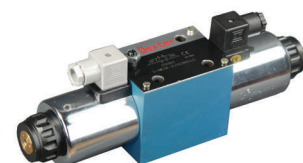
NG6 220VAC-110VAC double solenoid

There are 12VDC-24VDC-110 VAC-220VAC-24VAC-110VDC-220 VDC models are on stock. Other spool types can be delivered at order



<b>D-4 WE 10..73</b> WITH SOFT SWITCHING		spool type	size	max flow lt/min	max. pressure (P,A,B) bar	Voltage DC-AC
D-4WE 10 E73-3X/CG24N9Z4	E type soft	NG 10-1/2"	120	315	24V - DC	
D-4WE 10 L73-3X/CG24N9Z4	L type soft	NG 10-1/2"	120	315	24V - DC	
D-4WE 10 H73-3X/CG24N9Z4	H type soft	NG 10-1/2"	120	315	24V - DC	

<b>D-5 - 4 WE 10</b> SELENOID OPERATED DIRECTIONAL CONTROL VALVES		spool type	size	max flow lt/min	max. pressure (P,A,B) bar	Voltage DC-AC
5-4WE 10 E-3X/CG24N9Z4	5 room E type	NG 10-1/2"	120	315	24V - DC	
5-4WE 10 E-3X/CG24N9Z4/A06	5 room E type	NG 10-1/2"	120	315	24V - DC	
5-4WE 10 E-3X/CG24N9Z4/C	5 room E type	NG 10-1/2"	120	315	24V - DC	
5-4WE 10 H73-3X/CG24N9Z4/C	5 room H type	NG 10-1/2"	120	315	24V - DC	
5-4WE 10 L73-3X/CG24N9Z4/C	5 room L type	NG 10-1/2"	120	315	24V - DC	
5-4WE 10 C-3X/CG24N9Z4/C	5 room D type	NG 10-1/2"	120	315	24V - DC	
5-4WE 10 V-3X/CG24N9Z4/C	5 room V type	NG 10-1/2"	120	315	24V - DC	
5-4WE 10 G-3X/CG24N9Z4/C	5 room G type	NG 10-1/2"	120	315	24V - DC	



**D-4 WE 10**  
SELENOID OPERATED  
DIRECTIONAL CONTROL VALVES



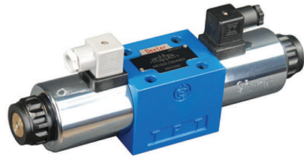
NG10 220VAC-110VAC  
single solenoid



NG10 24VDC-12VDC  
single solenoid



NG10 220VAC-110VAC  
double solenoid



NG10 24VDC-12VDC  
double solenoid

	spool type	size	max flow lt/min	max. pressure (P,A,B) bar	Voltage DC-AC
D-3WE 10 A-3X/CG24N9Z4	A type	NG 10-1/2"	120	315	24V - DC
D-3WE 10 B-3X/CG24N9Z4	B type	NG 10-1/2"	120	315	24V - DC
D-3WE 10 B-3X/CW220N9Z4	B type	NG 10-1/2"	120	315	220V - AC
D-4WE 10 C-3X/CG24N9Z4	D type	NG 10-1/2"	120	315	24V - DC
D-4WE 10 C-3X/CW220N9Z4	D type	NG 10-1/2"	120	315	220V - AC
D-4WE 10 D-3X/CG24N9Z4	D type	NG 10-1/2"	120	315	24V - DC
D-4WE 10 D-3X/CW220N9Z4	D type	NG 10-1/2"	120	315	220V - AC
D-4WE 10 D-3X/OF CW110N9Z4	D type with detent	NG 10-1/2"	120	315	110V - AC
D-4WE 10 D-3X/OF CG24N9Z4	D type with detent	NG 10-1/2"	120	315	24V - DC
D-4WE 10 J-3X/CG12N9Z4	J type	NG 10-1/2"	120	315	24V - DC
D-4WE 10 J-3X/CG24N9Z4	J type	NG 10-1/2"	120	315	24V - DC
D-4WE 10 J-3X/CW110N9Z4	J type	NG 10-1/2"	120	315	110V - AC
D-4WE 10 J-3X/CW220N9Z4	J type	NG 10-1/2"	120	315	220V - AC
D-4WE 10 E-3X/CG24N9Z4	E type	NG 10-1/2"	120	315	24V - DC
D-4WE 10 E-3X/CW110N9Z4	E type	NG 10-1/2"	120	315	110V - AC
D-4WE 10 E-3X/CW220N9Z4	E type	NG 10-1/2"	120	315	220V - AC
D-4WE 10 E-3X/CW24N9Z4	E type	NG 10-1/2"	120	315	24V - AC !!!
D-4WE 10 E-3X/CG220N9Z4	E type	NG 10-1/2"	120	315	220V - DC !!!
D-4WE 10 E-3X/CG24N10Z4	E type	NG 10-1/2"	120	315	24V - DC
D-4WE 10 G-3X/CG12N9Z4	G type	NG 10-1/2"	30-120	315	24V - DC
D-4WE 10 G-3X/CG24N9Z4	G type	NG 10-1/2"	30-120	315	24V - DC
D-4WE 10 G-3X/CW220N9Z4	G type	NG 10-1/2"	30-120	315	220V - AC
D-4WE 10 H-3X/CG24N9Z4	H type	NG 10-1/2"	120	315	24V - DC
D-4WE 10 H-3X/CW220N9Z4	H type	NG 10-1/2"	120	315	220V - AC
D-4WE 10 HA-3X/CG24N9Z4	HA type	NG 10-1/2"	120	315	24V - DC
D-4WE 10 HA-3X/CW220N9Z4	HA type	NG 10-1/2"	120	315	220V - AC
D-4WE 10 U-3X/CG24N9Z4	U type	NG 10-1/2"	120	315	24V - DC
D-4WE 10 M-3X/CG24N9Z4	M type	NG 10-1/2"	120	315	24V - DC
D-4WE 10 L-3X/CG24N9Z4	L type	NG 10-1/2"	120	315	24V - DC
D-4WE 10 F-3X/CG24N9Z4	F type	NG 10-1/2"	30-120	315	24V - DC
D-4WE 10 P-3X/CG24N9Z4	P type	NG 10-1/2"	30-120	315	24V - DC
D-4WE 10 Q-3X/CG24N9Z4	Q type	NG 10-1/2"	120	315	24V - DC
D-4WE 10 R-3X/CG24N9Z4	R type	NG 10-1/2"	120	315	24V - DC
D-4WE 10 T-3X/CG24N9Z4	T type	NG 10-1/2"	30-120	315	24V - DC
D-4WE 10 V-3X/CG24N9Z4	V type	NG 10-1/2"	120	315	24V - DC
D-4WE 10 W-3X/CG24N9Z4	W type	NG 10-1/2"	120	315	24V - DC
D-4WE 10 Y-3X/CG24N9Z4	Y type	NG 10-1/2"	120	315	24V - DC

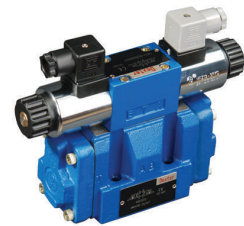
There are 12VDC-24VDC-110 VAC-220VAC-24VAC-110VDC-220 VDC models our stocks. Other spool types can be delivered at order.

**NG10 VALVES WITH PILOT**

**D-H- 4WEH 10**  
SELENOID OPERATED  
DIRECTIONAL CONTROL VALVES

	spool type	size	max flow lt/min	max. pressure (P,A,B) bar	Voltage DC-AC
D-H-4WEH 10 D-2X/6EG24NETZ4	D type with pilot	NG 10 with pilot	160	350	24V - DC
D-H-4WEH 10 E-2X/6EG24NETZ4	E type with pilot	NG 10 with pilot	160	350	24V - DC
D-H-4WEH 10 J-2X/6EG24NETZ4	J type with pilot	NG 10 with pilot	160	350	24V - DC
D-H-4WEH 10 L-2X/6EG24NETZ4	L type with pilot	NG 10 with pilot	160	350	24V - DC
D-H-4WEH 10 H-2X/6EG24NETZ4	H type with pilot	NG 10 with pilot	160	350	24V - DC

Other spool types can be delivered at order.



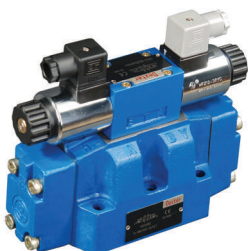
**NG16 VALVES**

**D-H- 4WEH 16**

NG 16 / CETOP 7 / 4/2, 4/3  
SELENOID OPERATED  
DIRECTIONAL CONTROL VALVES

	spool type	size	max flow lt/min	max. pressure (P,A,B) bar	Voltage DC-AC
D-H-4WEH 16 D-5X/6EG24NETZ4	D type	NG 16-5/8"	300	350	24V - DC
D-H-4WEH 16 J-5X/6EG24NETZ4	J type	NG 16-5/8"	300	350	24V - DC
D-H-4WEH 16 E-5X/6EG24NETZ4	E type	NG 16-5/8"	300	350	24V - DC
D-H-4WEH 16 G-5X/6EG24NETZ4	G type	NG 16-5/8"	300	350	24V - DC
D-H-4WEH 16 L-5X/6EG24NETZ4	L type	NG 16-5/8"	300	350	24V - DC
D-H-4WEH 16 H-5X/6EG24NETZ4	H type	NG 16-5/8"	300	350	24V - DC

Other spool types can be delivered at order.

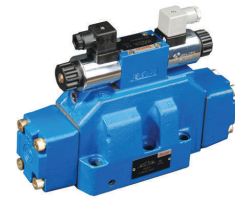
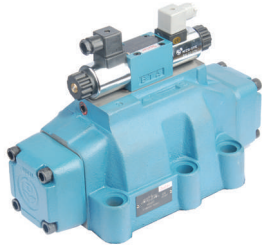


**D-H-4WEH 25**

NG 25 / CETOP 8 / 4/2, 4/3  
SOLENOID OPERATED  
DIRECTIONAL CONTROL VALVES

	spool type	size	max flow lt/min	max. pressure (P,A,B) bar	Voltage DC-AC
D-H-4WEH 25 D-5X/6EG24NETZ4	D type	NG 25-3/4	650	350	24V - DC
D-H-4WEH 25 J-5X/6EG24NETZ4	J type	NG 25-3/5	650	350	24V - DC
D-H-4WEH 25 E-5X/6EG24NETZ4	E type	NG 25-3/6	650	350	24V - DC
D-H-4WEH 25 G-5X/6EG24NETZ4	G type	NG 25-3/7	650	350	24V - DC
D-H-4WEH 25 L-5X/6EG24NETZ4	L type	NG 25-3/8	650	350	24V - DC
D-H-4WEH 25 H-5X/6EG24NETZ4	H type	NG 25-3/9	650	350	24V - DC

ther spool types can be delivered at order.

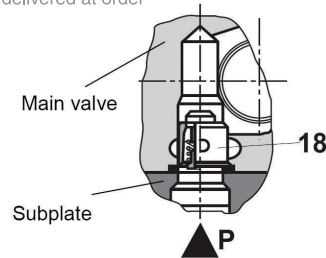


**D-H-4WEH 32**

NG 32 / CETOP 10 / 4/2, 4/3  
SOLENOID OPERATED  
DIRECTIONAL CONTROL VALVES

	spool type	size	max flow lt/min	max. pressure (P,A,B) bar	Voltage DC-AC
D-H-4WEH 32 D-5X/6EG24NETZ4	D type	NG 32-11/2"	1100	350	24V - DC
D-H-4WEH 32 J-5X/6EG24NETZ4	J type	NG 32-11/2"	1100	350	24V - DC
D-H-4WEH 32 E-5X/6EG24NETZ4	E type	NG 32-11/2"	1100	350	24V - DC
D-H-4WEH 32 G-5X/6EG24NETZ4	G type	NG 32-11/2"	1100	350	24V - DC
D-H-4WEH 32 H-5X/6EG24NETZ4	H type	NG 32-11/2"	1100	350	24V - DC

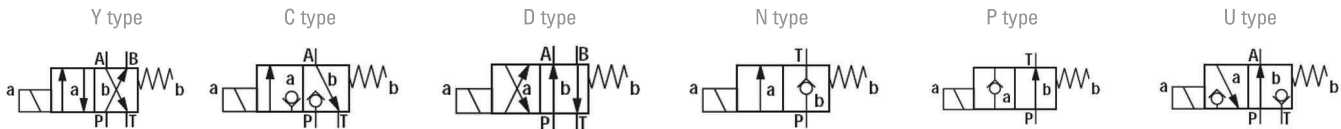
Other spool types can be delivered at order



**PREPRESSING VALVE**

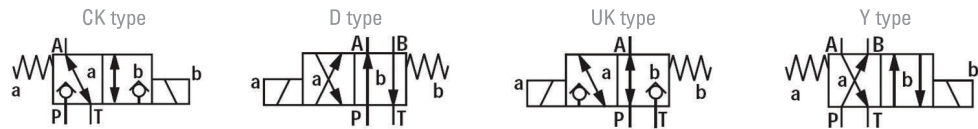
	mounting type	size	max flow lt/min	max. pressure (bar)	opening pressure (bar)
D-P6,0 PREPRESSING VALVE NG 16	at input P	NG 16	200	350	6
D-P6,0 PREPRESSING VALVE NG 25	at input P	NG 25	250	350	6
D-P6,0 PREPRESSING VALVE NG 32	at input P	NG 32	720	350	6

**POPET TYPE DIRECTIONAL CONTROL VALVES**



**D-M-3SEW**  
NG 6 / CETOP 3 / 4/2, 4/3  
POPET TYPE DIRECTIONAL CONTROL VALVES

	spool type	size	max flow lt/min	max. pressure (P,A,B) bar	Voltage DC-AC
D-M-3SEW 6 C-3X/420MG24N9K4	C type	NG 6-1/4"	25	420	24V - DC
D-M-3SEW 6 C-30/420M110RN5ZL 110V-AC-50Hz	C type	NG 6-1/4"	25	420	110V - AC
D-M-3SEW 6 C-30/420M220RN5ZL 220V-AC-50Hz	C type	NG 6-1/4"	25	420	220V - AC
D-M-3SEW 6 U-3X/420MG24N9K4	U type	NG 6-1/4"	25	420	24V - DC
D-M-3SEW 6 U-30/420M110RN5ZL 110V-AC-50Hz	U type	NG 6-1/4"	25	420	110V - AC
D-M-3SEW 6 U-30/420M220RN5ZL 220V-AC-50Hz	U type	NG 6-1/4"	25	420	220V - AC
D-M-3SEW 10 C-1X/420MG24N9Z4	C type	NG 10-1/2"	40	420	24V - DC



**D-M-3SED**  
NG 6 / CETOP 3 / 4/2, 4/3  
POPET TYPE DIRICTIONAL CONTROL VALVES

	spool type	size	max flow lt/min	max. pressure (P,A,B) bar	Voltage DC-AC
D-M-3SED 6CK-13/350 CG24N9Z4	CK type	NG 6-1/4"	25	350	24V - DC
D-M-3SED 6UK-13/350 CG24N9Z4	UK type	NG 6-1/4"	25	350	24V - DC
D-M-3SED 6CK-13/350 CG205N9Z4 ( 220VAC-50Hz )	CK type	NG 6-1/4"	25	350	220V - AC
D-M-3SED 6UK-13/350 CG205N9Z4 ( 220VAC-50Hz )	UK type	NG 6-1/4"	25	350	220V - AC
D-M-3SED 10 UK-1X/350CG24N9Z4	C type	NG 10-1/2"	40	350	24V - DC

**POPET TYPE PRESSURE RELIEF VALVES**



DBDS30K type



DBDS20K type



DBDH10K type



DBDH6K type



DBD2K type



DBDH6G type



DBDH10G type



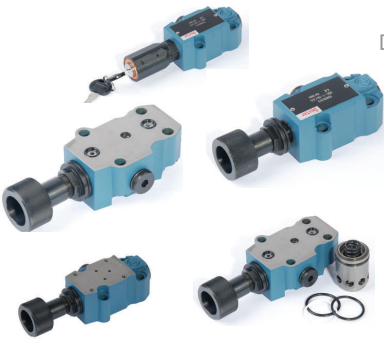
DBDH20G type

<b>D-DBD</b> DIRECT OPERATED CARTRIDGE TYPE POPET PRESSURE RELIEF VALVES		connection type	size	max flow lt/min	max. pressure (bar)	technical details
D-DBDS 2 K1X/315	Cardridge type	NG 2	5	315	direct operated popet	
D-DBDH 6 K1-X/25	Cardridge type	NG 6	60	25	direct operated popet	
D-DBDH 6 K-1X/50	Cardridge type	NG 6	60	50	direct operated popet	
D-DBDH 6 K-1X/100	Cardridge type	NG 6	60	100	direct operated popet	
D-DBDH 6 K-1X/200	Cardridge type	NG 6	60	200	direct operated popet	
D-DBDH 6 K-1X/315	Cardridge type	NG 6	60	315	direct operated popet	
D-DBDH 6 K-1X/400	Cardridge type	NG 6	60	400	direct operated popet	
D-DBDH 6 G-1X/100 block including	1/4"	NG 6	60	100	direct operated popet	
D-DBDH 6 G-1X/315 block including	1/4"	NG 6	60	315	direct operated popet	
D-DBDH 10 K-1X/25	Cardridge type	NG 10	120	25	direct operated popet	
D-DBDH 10 K-1X/50	Cardridge type	NG 10	120	50	direct operated popet	
D-DBDH 10 K-1X/100	Cardridge type	NG 10	120	100	direct operated popet	
D-DBDH 10 K-1X/315	Cardridge type	NG 10	120	315	direct operated popet	
D-DBDH 10 K-1X/400	Cardridge type	NG 10	120	400	direct operated popet	
D-DBDH 10 G-1X/100 block including	Cardridge type	NG 10	120	100	direct operated popet	
D-DBDH 10 G-1X/315 block including	Cardridge type	NG 10	120	315	direct operated popet	
D-DBDS 20 K1X/315	Cardridge type	NG 20	250	315	direct operated popet	
D-DBDS 20 G-1X/315 block including	Cardridge type	NG 20	250	315	direct operated popet	
D-DBDS 30 K1X/315	Cardridge type	NG 30	350	315	direct operated popet	

All of the 25-50-100-200-315-400 bar has variable pressure choices  
DBD8,DBD15,DBD25 types can be delivered at order.

**D-DB..K1**  
DIRECT OPERATED CARTRIDGE TYPE  
POPET PRESSURE RELIEF VALVES

	connection type	size	max flow lt/min	max. pressure (bar)	technical details
D-DB 6 K1-1X/315 YV	Cardridge type	NG 6	60	315	pilot operated
D-DB 10 K1-1X/315YV	Cardridge type	NG 10	100	315	pilot operated
D-DB 20 K1-1X/315XY	Cardridge type	NG 20	300	315	pilot operated
D-DB 20 K2-1X/315Y	Cardridge type	NG 20	300	315	pilot operated



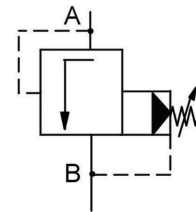
**D-DC**  
DIRECT OPERATED CARTRIDGE TYPE  
POPET PRESSURE RELIEF VALVES

	connection type	size	max flow lt/min	max. pressure (bar)	technical details
DBC-1-5X/315 FOR 5X SERIES ( the pilot of DB valves )	Plate type	NG 10-20-30	pilot valve	315	only pilot valve
DBC-3-5X/315 FOR 5X SERIES ( the pilot of DB valves )	Plate type	NG 10-20-31	pilot valve	315	only pilot valve
DBWC-1-5X/315 FOR 5X SERIES ( the pilot of DBW valves )	SANDWICH type	NG 10-20-32	pilot valve	315	only pilot valve
DBC 10-1-5X/315	Plate type	NG 10-20-33	pilot valve	315	pilot + logic valve
DBWC 30B-1-5X/315	Plate type	NG 10-20-34	pilot valve	315	pilot + logic valve
DBWC 30B-1-5X/315/6CG24N9Z4	Plate type	NG 10-20-34	pilot valve	315	pilot + logic valve + valve

**D-DB**  
PILOT OPERATED PLATE TYPE  
PRESSURE RELIEF VALVES

	connection type	size	max flow lt/min	max. pressure (bar)	technical details
D-DB 10-1-5X/315	Plate type	NG 10	250	315	pilot operated
D-DB 20-1-5X/315	Plate type	NG 20	500	315	pilot operated
D-DB 30-1-5X/315	Plate type	NG 30	650	315	pilot operated

DB15 AND DB25 types can be delivered at order

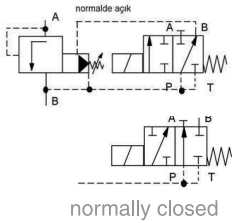


DB10

DB20

DB30



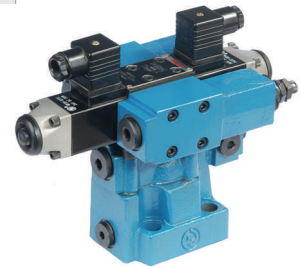
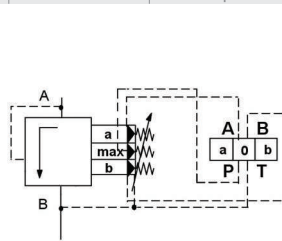


D-DBW PILOT OPERATED PLATE TYPE PRESSURE RELIEF VALVES		connection type	size	max flow lt/min	max. pressure (bar)	technical details
D-DBW 10-B-1-5X/315-6EG24N9Z4	Plate type	NG 10	250	315	the type of discharge	
D-DBW 20-B-1-5X/315-6EG24N9Z4	Plate type	NG 20	500	315	the type of discharge	
D-DBW 30-B-1-5X/315-6EG24N9Z4	Plate type	NG 30	650	315	the type of discharge	

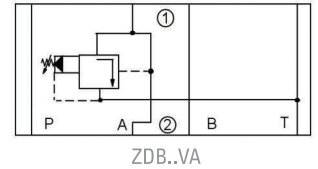
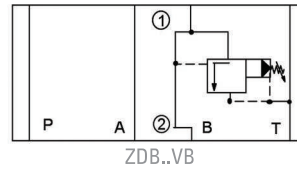
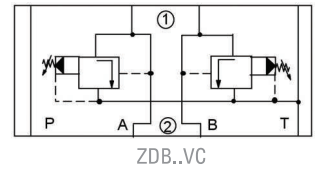
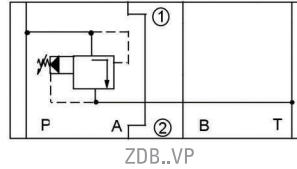
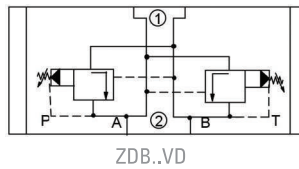
Standard delivered as NK.At can be delivered as N.O.  
1- DBW15 and DBW25 types can be delivered of order.



D-DB3U PILOT OPERATED PLATE TYPE multi-stage PRESSURE RELIEF VALVES		connection type	size	max flow lt/min	max. pressure (bar)	technical details
D-DB3U 10 H 2-30/315 G24NZ4V	Plate type	NG 10	200	315	multi-pressure relief	
D-DB3U 20 H 2-30/315 G24NZ4	Plate type	NG 20	400	315	multi-pressure relief	
D-DB3U 30 H 2-30/315 G24NZ4	Plate type	NG 30	600	315	multi-pressure relief	



### SANDWICH PLATE TYPE PRESSURE RELIEF VALVES



D-ZDB SANDWICH PLATE TYPE PRESSURE RELIEF VALVES		connection type	size	max flow lt/min	max. pressure (bar)	technical details
D-ZDB 6 VP2-4X/315V	Sandwich type	NG 6	60	315	from P to tank security	
D-ZDB 6 VA2-4X/315V	Sandwich type	NG 6	60	315	from A to tank security	
D-ZDB 6 VB2-4X/315V	Sandwich type	NG 6	60	315	from B Tanka emniye	
D-Z2DB 6 VC2-4X/315V	Sandwich type	NG 6	60	315	from A,B to tank security	
D-Z2DB 6 VD2-4X/315V	Sandwich type	NG 6	60	315	from A,B to each other security	
D-ZDB 10 VP2-4X/315V	Sandwich type	NG 10	100	315	from P to tank security	
D-ZDB 10 VA2-4X/315V	Sandwich type	NG 10	100	315	from A to tank security	
D-ZDB 10 VB2-4X/315V	Sandwich type	NG 10	100	315	from B to tank security	
D-Z2DB 10 VC2-4X/315V	Sandwich type	NG 10	100	315	from A,B to tank security	
D-Z2DB 10 VD2-4X/315V	Sandwich type	NG 10	100	315	from A,B to each other security	

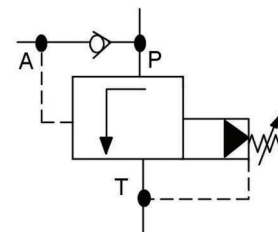
315 bar pressure valves are on stock, 50-100-200 bar types can be delivered at order



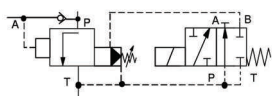
**ACCUMULATOR CHARGING VALVES**



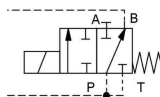
<b>D-DA</b> ACCUMULATOR VALVES		connection type	size	max flow lt/min	max. pressure (bar)	technical details
D-DA 10-1-3X/160	Plate type	NG 10	40	40	160	pilot operated
D-DA 20-1-3X/160	Plate type	NG 20	100	100	160	pilot operated
D-DA 30-1-3X/160	Plate type	NG 30	250	250	160	pilot operated
D-DA 10-1-3X/315	Plate type	NG 10	40	40	315	pilot operated
D-DA 20-1-3X/315	Plate type	NG 20	100	100	315	pilot operated
D-DA 30-1-3X/315	Plate type	NG 30	250	250	315	pilot operated



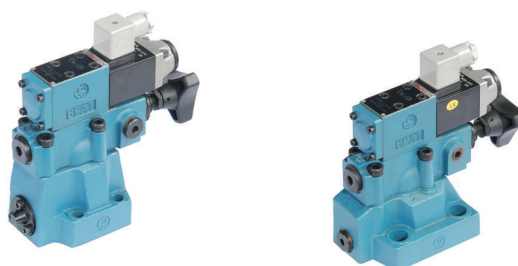
160-315 bar accumulators are on stock, 80 bar accumulator can be delivered at order.



N.K. Tip



N.A. Tip

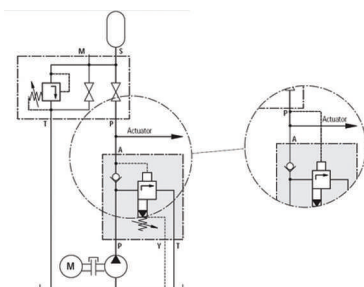


<b>D-DAW</b> DUMP TYPE ACCUMULATOR VALVES		connection type	size	max flow lt/min	max. pressure (bar)	technical details
D-DAW 10-B-1-3X/160-6EG24N9Z4	Plate type	NG 10	40	40	160	dump type accumulator valves
D-DAW 20-B-1-3X/160-6EG24N9Z4	Plate type	NG 20	100	100	160	dump type accumulator valves
D-DAW 30-B-1-3X/160-6EG24N9Z4	Plate type	NG 30	250	250	160	dump type accumulator valves
D-DAW 10-B-1-3X/315-6EG24N9Z4	Plate type	NG 10	40	40	315	dump type accumulator valves
D-DAW 20-B-1-3X/315-6EG24N9Z4	Plate type	NG 20	100	100	315	dump type accumulator valves
D-DAW 30-B-1-3X/315-6EG24N9Z4	Plate type	NG 30	250	250	315	dump type accumulator valves

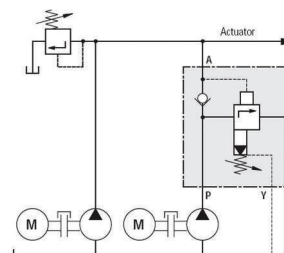


160-315 bar accumulators are on stock, 80 bar accumulator can be delivered at order.

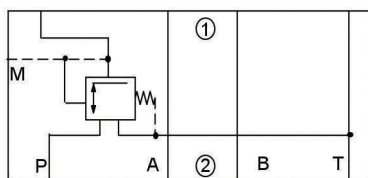
Use with accumulator



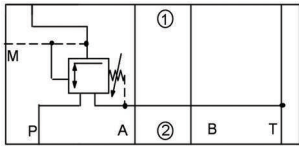
At high-pressure and low-pressure two pump systems



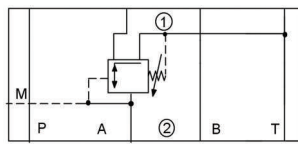
**PRESSURE REDUCING VALVES**



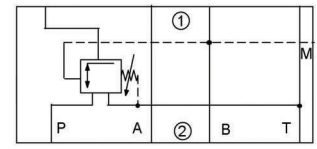
<b>D-ZDR</b> ZDR 6 DP0-40/40YMV		connection type	size	max flow lt/min	max. pressure (bar)	technical details
D-ZDR 6 DP0-40/40YMV		SANDWICH type	NG 6	7	40	direct operated



DP



DA



DB

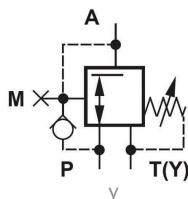
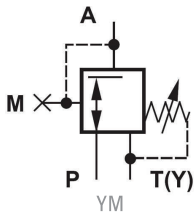


**D-ZDR**

**SANDWICH PLATE TYPE PRESSURE REDUCING VALVES**

	connection type	size	max flow lt/min	max. pressure (bar)	technical details
D-ZDR 6 DP1-3X/75YMV	sandwich type	NG 6	30	75	direct operated
D-ZDR 6 DP1-3X/210YMV	sandwich type	NG 6	30	210	direct operated
D-ZDR 6 DA1-3X/210YV	sandwich type	NG 6	30	210	direct operated
D-ZDR 6 DB1-3X/210YV	sandwich type	NG 6	30	210	direct operated
D-ZDR 10 DP1-4X/210YM	sandwich type	NG 10	50	210	direct operated
D-ZDR 10 DA1-4X/210YV	sandwich type	NG 10	50	210	direct operated

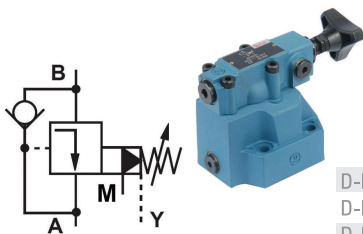
Other types can be delivered at order.



**D-DR**

	connection type	size	max flow lt/min	max. pressure (bar)	technical details
D-DR6DP1-5X/210Y	Plate type	NG 6	60	210	direct operated
D-DR6DP1-5X/150Y	Plate type	NG 6	60	150	direct operated
D-DR6DP1-5X/75Y	Plate type	NG 6	60	75	direct operated
D-DR6DP1-5X/75YM	Plate type	NG 6	60	75	direct operated
D-DR6DP1-5X/25YM	Plate type	NG 6	60	25	direct operated

Other types can be delivered at order.



**D-DR**

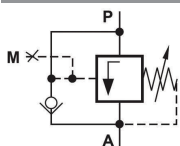
**PLATE TYPE PRESSURE REDUCING VALVES**

	connection type	size	max flow lt/min	max. pressure (bar)	technical details
D-DR 10-1-3X/315Y	Plate type	NG 10	80	315	pilot operated
D-DR 20-1-3X/315Y	Plate type	NG 20	200	315	pilot operated
D-DR 30-1-3X/315Y	Plate type	NG 30	300	315	pilot operated

Other types can be delivered at order.

DR15 and DR25 types can be delivered at order.

**PRESSURE SEQUENCE VALVES**

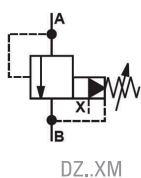
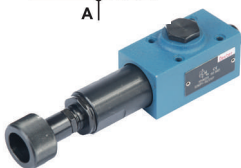


**D-DZ..D**

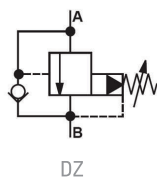
**MODULER TYPE PRESSURE SEQUENCE VALVES**

	connection type	size	max flow lt/min	max. pressure (bar)	technical details
D-DZ6DP1-5X/75Y	Plate type	NG 6	60	75	direct operated
D-DZ6DP1-5X/210Y	Plate type	NG 6	60	210	direct operated

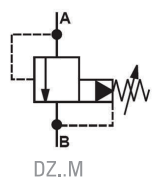
Other types can be delivered at order.



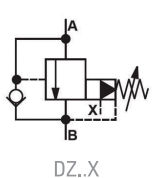
DZ..XM



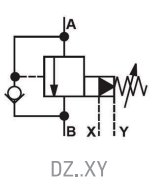
DZ



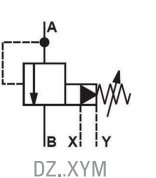
DZ..M



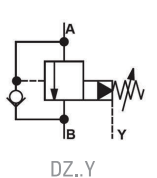
DZ..X



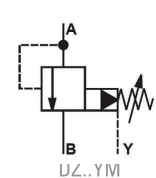
DZ..XY



DZ..XYM



DZ..Y



DZ..YM

**D-DZ**

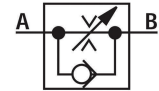
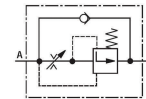
**PLATE TYPE PRESSURE SEQUENCE VALVES**

	connection type	size	max flow lt/min	max. pressure (bar)	technical details
D-DZ 10-1-3X/210	Plate type	NG 10	150	210	pilot operated
D-DZ 20-1-3X/210	Plate type	NG 20	300	210	pilot operated
D-DZ 30-1-3X/210	Plate type	NG 30	450	210	pilot operated

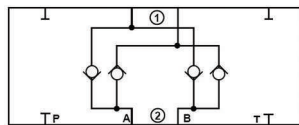
Other types can be delivered at order.

**FINE THROTTLE**

<b>D-2FRM</b> SENSITIVE FLOW CONTROL VALVES	setting version	connection size	max flow lt/min	max. Pressure (bar)	type
D-2 FRM 5-31/0.2QV (key lock)	with hand drum	NG 5	0,2	210	With Check Valve
D-2 FRM 5-31/0.6QV (key lock)	with hand drum	NG5	0,6	210	With Check Valve
D-2 FRM 5-31/1.2QV (key lock)	with hand drum	NG 5	1,2	210	With Check Valve
D-2 FRM 5-31/3QV (key lock)	with hand drum	NG 5	3	210	With Check Valve
D-2 FRM 5-31/6QV (key lock)	with hand drum	NG 5	6	210	With Check Valve
D-2 FRM 5-31/10QV	with hand drum	NG 5	10	210	With Check Valve
D-2 FRM 5-31/15QV	with hand drum	NG 5	15	210	With Check Valve
D-2 FRM 6 B76-3X/1,5QRV	with hand drum	NG 6	1,5	315	With Check Valve
D-2 FRM 6 B76-3X/3QRV	with hand drum	NG 6	3	315	With Check Valve
D-2 FRM 6 B76-3X/6QRV	with hand drum	NG 6	6	315	With Check Valve
D-2 FRM 6 B76-3X/10QRV	with hand drum	NG 6	10	315	With Check Valve
D-2 FRM 6 B76-3X/16QRV	with hand drum	NG 6	16	315	With Check Valve
D-2 FRM 6 B76-3X/25QRV	with hand drum	NG 6	25	315	With Check Valve
D-2 FRM 10-2X/25L	with hand drum	NG 10	25	315	With Check Valve
D-2 FRM 10-2X/50L	with hand drum	NG 10	50	315	With Check Valve
D-2 FRM 16-32/100L	with hand drum	NG 16	100	315	With Check Valve
D-2 FRM 16-21/160L	with hand drum	NG 16	160	315	With Check Valve



- 1- The model of FRM sensitive flow control valve with different permeability can be delivered at order.
- 2- Independent speed valve independent from load .
- 3- Independent speed valve from heat.
- 4- Independent speed valve from changing of pressure.



**D-Z4S**  
FLOW RECTIFIER

	connection type	connection size	max flow lt/min	max. Pressure (bar)
D-Z4S 5-1X	sandwich type	NG 5	16	210
D-Z4S 6-1X/V	sandwich type	NG 6	25	315
D-Z4S 10-1X/V	sandwich type	NG 10	50	315
D-Z4S 16-1X/V	sandwich type	NG 16	160	315

**M Maxtor LINE TYPE FLOW CONTROL VALVES**

<b>D-FTC</b> ITALIAN TYPE FLOW CONTROL VALVES	size	connection size	check valve opening pressure	max. Pressure (bar)	max. flow lt/min
D-FTC-6-1/8"	DN 6	1/8"	0,5 bar	315	6
D-FTC-8-1/4"	DN 8	1/4"	0,5 bar	315	15
D-FTC-10-3/8"	DN 10	3/8"	0,5 bar	315	30
D-FTC-12-1/2"	DN 12	1/2"	0,5 bar	315	50
D-FTC-16-3/4"	DN 16	3/4"	0,5 bar	315	140
D-FTC-20-1"	DN 20	1"	0,5 bar	315	200
D-FTC-25-1 1/4"	DN 25	1 1/4"	0,5 bar	315	300
D-FTC-30-1 1/2"	DN 30	1 1/2"	0,5 bar	315	400
D-FT-6-1/8"	DN 6	1/8"	without check valve	315	6
D-FT-8-1/4"	DN 8	1/4"	without check valve	315	15
D-FT-10-3/8"	DN 10	3/8"	without check valve	315	30
D-FT-12-1/2"	DN 12	1/2"	without check valve	315	50
D-FT-16-3/4"	DN 16	3/4"	without check valve	315	140
D-FT-20-1"	DN 20	1"	without check valve	315	200



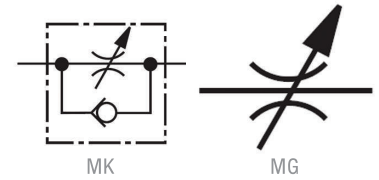
**D-TL**  
TAIWAN TYPE FLOW CONTROL VALVES

	size	connection size	check valve opening pressure	max. Pressure (bar)	max. flow lt/min
D-TL-02 1/4" with check valve flow control valve	02	1/4"	0,5 bar	210	15
D-TL-03 3/8" with check valve flow control valve	03	3/8"	0,5 bar	210	30
D-TL-04 1/2" with check valve flow control valve	04	1/2"	0,5 bar	210	50
D-TL-06 3/4" with check valve flow control valve	06	3/4"	0,5 bar	210	140
D-TL-02N 1/4" without check valve flow control	02	1/4"	without check valve	210	15
D-TL03N 3/8" without check valve flow control	03	3/8"	without check valve	210	30

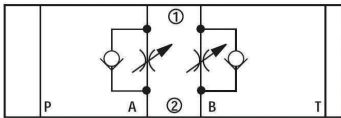
### D-MK-MG

#### TUBE TYPE FLOW CONTROL VALVES

	size	connection size	check valve opening pressure	max. Pressure (bar)	max. flow lt/min
D-MG 6 G-1X/V	6	1/4"	without check valve	315	15
D-MG 8 G-1X/V	8	3/8"	without check valve	315	30
D-MG 10 G-1X/V	10	1/2"	without check valve	315	50
D-MG 15 G-1X/V	15	3/4"	without check valve	315	125
D-MG 20 G-1X/V	20	1"	without check valve	315	200
D-MG 25 G-1X/V	25	1 1/4"	without check valve	315	300
D-MG 30 G-1X/V	30	1 1/2"	without check valve	315	400
D-MK 6 G-1X/V	6	1/4"	0,5 bar	315	15
D-MK 8 G-1X/V	8	3/8"	0,5 bar	315	30
D-MK 10 G-1X/V	10	1/2"	0,5 bar	315	50
D-MK 15 G-1X/V	15	3/4"	0,5 bar	315	125
D-MK 20 G-1X/V	20	1"	0,5 bar	315	200
D-MK 25 G-1X/V	25	1 1/4"	0,5 bar	315	300
D-MK 30 G-1X/V	30	1 1/2"	0,5 bar	315	400



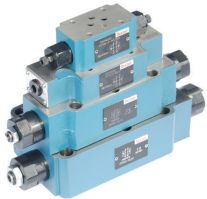
### SANDWICH TYPE FLOW CONTROL VALVES



### D-Z2FS

#### TWIN FLOW CONTROL VALVES WITH CHECK VALV

	adjustment	connection size	max. flow lt/min	max. Pressure (bar)	technical details
D-Z2FS 6-2-4X/S2V NEW SERIES	with alien key	NG 6	80	315	with check valve twin flow control
D-Z2FS 10-5-3X/S2V NEW SERIES	with alien key	NG 10	120	315	with check valve twin flow control
D-Z2FS 16-31/S2	with alien key	NG 16	250	350	with check valve twin flow control
D-Z2FS 22-3X/S2	with alien key	NG 22-25	350	350	with check valve twin flow control



The model with flow control at the entrance and the models with separately adjustment for A and B line can be delivered at order.

### PRESSURE SWITCHES VALVES



### D-HED 8 PRESSURE SWITCHES

	connection type	Min. pressure setting	max pressure setting	max. Pressure (bar)	technical details
D-HED 8 OA 1X/350 K14 KW	1/4"	8	350	500	with hand whell and scale
D-HED 8 OA 1X/100 K14 KW	1/4"	4	100	350	with hand whell and scale

### D-HED 8 PRESSURE SWITCHES

	connection type	Min. pressure setting	max pressure setting	max. Pressure (bar)	technical details
D-HED 8 OH 1X/350 K14 KW	Plate type	8	350	500	with hand whell and scale
D-HED 8 OH 1X/100 K14 KW	Plate type	4	100	350	with hand whell and scale



### D-HED 8 PRESSURE SWITCHES

	connection type	Min. pressure setting	max pressure setting	max. Pressure (bar)	technical details
D-HED 8 OP 1X/350 K14 KW	Plate type	8	350	500	with hand whell and scale
D-HED 8 OP 1X/100 K14 KW	Plate type	4	100	350	with hand whell and scale

50 and 200 bar models have been bring for your order

### D-HED 4 PRESSURE SWITCHES

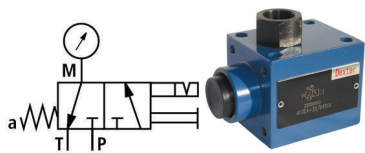
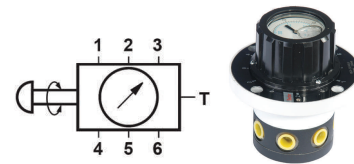
	connection type	Min. pressure setting	max pressure setting	max. Pressure (bar)	technical details
D-HED 4 OA 1X/50 Z14	1/4"	4	50	100	with alien key set,skale
D-HED 4 OA 1X/100 Z14	1/4"	8	100	350	with alien key set,skale
D-HED 4 OA 1X/350 Z14	1/4"	20	350	350	with alien key set,skale



### D-HED 1 PRESSURE SWITCHES

	connection type	Min. pressure setting	max pressure setting	max. Pressure (bar)	technical details
D-HED 1 OA-4X/50	1/4"	3,5	50	80	Alien anahtarla ayarlı
D-HED 1 OA-4X/100	1/4"	8	100	350	Alien anahtarla ayarlı
D-HED 1 OA-4X/350	1/4"	20	350	350	Alien anahtarla ayarlı

D-MS2A MULTIPLE MANOMETER	connection type	measurement point	Pressure measurement range (bar)	max. Pressure (bar)	technical details
D-"MS2A-2X/400 V Çoklu manometre"	1/4"	6	400	400	leakage line



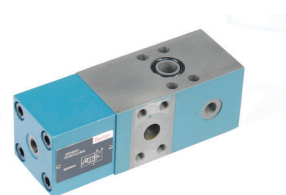
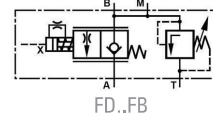
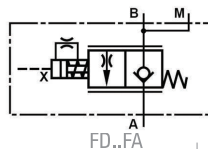
D-AF 6E MANOMETER SAFETY VALVE	connection type	working style	max. Pressure (bar)	technical details
D-"AF6EA-3X/X400V manometer safety valve	1/4"	3/2 sliding	400	Can be seen by pressing the button

**CHECK-Q-METER VALVES**

**D-FD**

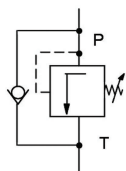
THE BALANCED OPPOSITE VALVE THAT WITHOUT OPENING LEAKAGE PROPORTIONAL

	connection type	size	max. flow lt/min	max. Pressure (bar)	pre opening rate check valve opening pressure
D-FD 12 FA-2X/B30	flange connection	NG 12	80	315	1/20 - 2 bar
D-FD 16 FA-2X/B30	flange connection	NG 12	200	315	1/20 - 2 bar
D-FD 16 FB-2X/B30 with seconder pressure relief valve	flange connection	NG 16	200	315	1/20 - 2 bar
D-FD 25 FA-2X/B40	flange connection	NG 25	320	315	1/20 - 2 bar
D-FD 32 FA-2X/B60	flange connection	NG 32	560	315	1/20 - 2 bar



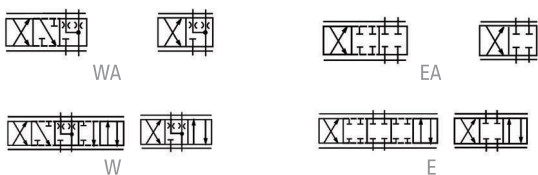
Other spool types can be delivered at order

**DIRECT OPERATED LOAD BALANCED VALVES**



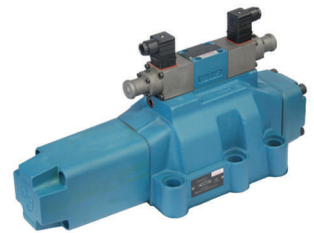
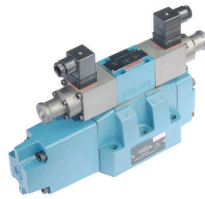
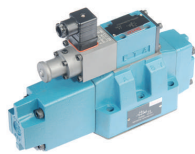
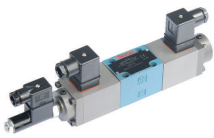
D-DC DIRECT OPERATED LOAD BALANCED VALVES	type	size	max. flow lt/min	max. Pressure (bar)	technical details
D-DC10G-2-10/315-V	1/2"	NG 10	110	315	without pilot, direct operated
D-DC20G-2-10/315-V	1"	NG 20	230	315	Pilotsuz, direkt uyarılı
D-DC30G-2-10/315-V	1 1/2"	NG 30	350	315	Pilotsuz, direkt uyarılı

**PROPORTIONAL DIRECTIONAL CONTROL VALVES**



D-4 WRA PROPORTIONAL DIRECTIONAL CONTROL VALVES	type	spool-type feedback ?	size	$\Delta P_{10}$ bar in the flow lt/min	max. Pressure (bar)	card / supply voltage / max. current / control voltage
D-4WRA 6E30-2X/G12N9K4	Yeni	E type without feedback	NG 6	30	315	special/12VDC/1,76A/+9V
D-4WRA 6E15-2X/G12N9K4	Yeni	E type without feedback	NG 6	15	315	special/12VDC/1,76A/+9V
D-4WRA 6E07-2X/G12N9K4	Yeni	E type without feedback	NG 6	7	315	special/12VDC/1,76A/+9V
D-4WRA 6U30-2X/G12N9K4	Yeni	U type without feedback	NG 6	30	315	special/12VDC/1,76A/+9V
D-4WRA 6E 20-1X/24NZ4M	Dexter	E type without feedback	NG 6	17	315	VT 3013/24VDC/1,5A/+9V
D-4WRA 6E 10-1X/24NZ4M	Dexter	E type without feedback	NG 6	13	315	VT 3013/24VDC/1,5A/+9V
D-4WRA 6E 5-1X/24NZ4M	Dexter	E type without feedback	NG 6	8	315	VT 3013/24VDC/1,5A/+9V
D-4WRA 6W 20-1X/24NZ4M	Dexter	W type without feedback	NG 6	17	315	VT 3013/24VDC/1,5A/+9V
D-4WRA 6W 10-1X/24NZ4M	Dexter	W type without feedback	NG 6	13	315	VT 3013/24VDC/1,5A/+9V
D-4WRA 6W 5-1X/24NZ4M	Dexter	W type without feedback	NG 6	8	315	VT 3013/24VDC/1,5A/+9V
D-4WRA 6EB 20-1X/24NZ4M	Dexter	E+D type without feedback	NG 6	17	315	VT 3013/24VDC/1,5A/+9V
D-4WRA 10E 40-1X/24NZ4M	Dexter	E type without feedback	NG 10	50	315	VT 3014/24VDC/1,5A/+9V
D-4WRA 10E 20-1X/24NZ4M	Dexter	E type without feedback	NG 10	27	315	VT 3014/24VDC/1,5A/+9V
D-4WRA 10E 10-1X/24NZ4M	Dexter	E type without feedback	NG 10	18	315	VT 3014/24VDC/1,5A/+9V
D-4WRA 10W 40-1X/24NZ4M	Dexter	W type without feedback	NG 10	50	315	VT 3014/24VDC/1,5A/+9V
D-4WRA 10W 20-1X/24NZ4M	Dexter	W type without feedback	NG 10	27	315	VT 3014/24VDC/1,5A/+9V
D-4WRA 10W 10-1X/24NZ4M	Dexter	W type without feedback	NG 10	18	315	VT 3014/24VDC/1,5A/+9V
D-4WRA 10EB40-1X/24NZ4M	Dexter	E+E type without feedback	NG 10	50	315	VT 3014/24VDC/1,5A/+9V

## PROPORTIONAL DIRECTIONAL CONTROL VALVES



<b>D-4 WRE</b> PROPORTIONAL DIRECTIONAL CONTROL VALVES		spool-type feedback ?	size	$\Delta P_{10}$ bar in the flow lt/min	max. Pressure (bar)	card / supply voltage / max. current / control voltage
D-4WRE 6E 32-1X/24Z4/V	E type with feedback	NG 6	32	315	VT 5005/24VDC/1,5A/+9V	
D-4WRE 6E 16-1X/24Z4/V	E type with feedback	NG 6	16	315	VT 5005/24VDC/1,5A/+9V	
D-4WRE 6E 8-1X/24Z4/V	E type with feedback	NG 6	8	315	VT 5005/24VDC/1,5A/+9V	
D-4WRE 6W 32-1X/24Z4/V	W type with feedback	NG 6	32	315	VT 5005/24VDC/1,5A/+9V	
D-4WRE 6W 16-1X/24Z4/V	W type with feedback	NG 6	16	315	VT 5005/24VDC/1,5A/+9V	
D-4WRE 6W 8-1X/24Z4/V	W type with feedback	NG 6	8	315	VT 5005/24VDC/1,5A/+9V	
D-4WRE 10E 64-1X/24Z4/V	E type with feedback	NG 10	64	315	VT 5005/24VDC/1,5A/+9V	
D-4WRE 10E 32-1X/24Z4/V	E type with feedback	NG 10	32	315	VT 5005/24VDC/1,5A/+9V	
D-4WRE 10E 16-1X/24Z4/V	E type with feedback	NG 10	16	315	VT 5005/24VDC/1,5A/+9V	
D-4WRE 10W 64-1X/24Z4/V	W type with feedback	NG 10	64	315	VT 5005/24VDC/1,5A/+9V	
D-4WRE 10W 32-1X/24Z4/V	W type with feedback	NG 10	32	315	VT 5005/24VDC/1,5A/+9V	
D-4WRE 10W 16-1X/24Z4/V	W type with feedback	NG 10	16	315	VT 5005/24VDC/1,5A/+9V	

<b>D-4 WRZ</b> PROPORTIONAL DIRECTIONAL CONTROL VALVES		spool-type feedback ?	size	$\Delta P_{10}$ bar in the flow lt/min	max. Pressure (bar)	card / supply voltage / max. current / control voltage
D-4WRZ 10E 85-3X/6A24NK4/V	E type without feedback	NG 10 with pilot	85	315	VT 3000/24VDC/0,8A/+9V	
D-4WRZ 10W 85-3X/6A24NETK4/V	E type without feedback	NG 10 with pilot	85	315	VT 3000/24VDC/0,8A/+9V	
D-4WRZ 16E 150-3X/6A24NETK4/V	E type without feedback	NG 16	150	350	VT 3000/24VDC/0,8A/+9V	
D-4WRZ 16E 100-3X/6A24NETK4/V	E type without feedback	NG 16	100	350	VT 3000/24VDC/0,8A/+9V	
D-4WRZ 16EB 150-3X/6A24NETK4/V	EB type without feedback	NG 16	150	350	VT 3000/24VDC/0,8A/+9V	
D-4WRZ 16W 150-3X/6A24NETK4/V	W type without feedback	NG 16	150	350	VT 3000/24VDC/0,8A/+9V	
D-4WRZ 25E 325-3X/6A24NETK4/V	E type without feedback	NG 25	325	350	VT 3000/24VDC/0,8A/+9V	
D-4WRZ 25W 325-3X/6A24NETK4/V	W type without feedback	NG 25	325	350	VT 3000/24VDC/0,8A/+9V	
D-4WRZ 32E 520-3X/6A24NETK4/V	E type without feedback	NG 32	520	350	VT 3000/24VDC/0,8A/+9V	

For other proportional types please contact us.

## PROPORTIONAL PRESSURE RELIEF VALVES



<b>D-DBET</b> PROPORTIONAL PRESSURE RELIEF VALVES		connection type	size	max flow lt/min	max. Pressure bar	card / supply voltage / max. current / control voltage
D-DBET-5X/315 G24K4M SO1	Plate type	NG 6	2	315	VT 2000/24VDC/0,8A/+9V	
D-DBET-5X/80 G24K4M SO1	Plate type	NG 6	2	80	VT 2000/24VDC/0,8A/+9V	
D-DBET-30B/315G24N9Z4M	3X pilot connection	Pilot	0,7	315	VT 2000/24VDC/0,8A/0-10V	
D-DBET-30B/50G24N9Z4M	3X pilot connection	Pilot	2	50	VT 2000/24VDC/0,8A/0-10V	

<b>D-DBETR</b> PROPORTIONAL PRESSURE RELIEF VALVES		connection type	size	max flow lt/min	max. Pressure bar	card / supply voltage / max. current / control voltage
D-DBETR-1X/315	with feedback plate type	NG 6	2	315	VT 5003/24VDC/1,5A/0-10V	
D-DBETR-1X/180	with feedback plate type	NG 6	3	180	VT 5003/24VDC/1,5A/0-10V	
D-DBETR-1X/25	with feedback plate type	NG 6	10	25	VT 5003/24VDC/1,5A/0-10V	



<b>D-DBE</b> PROPORTIONAL PRESSURE RELIEF VALVES		connection type	size	max flow lt/min	max. Pressure bar	card / supply voltage / max. current / control voltage
D-DBE 10-3X/315YM	Plate type	NG 10	200	315	VT 2000/24VDC/0,8A/0-10V	
D-DBE 20-3X/315YM	Plate type	NG 20	400	315	VT 2000/24VDC/0,8A/0-10V	
D-DBE 30-3X/315YM	Plate type	NG 30	600	315	VT 2000/24VDC/0,8A/0-10V	

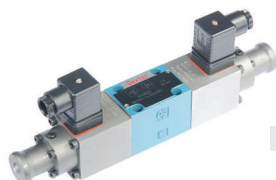
50-100-200 bar pressure types can be delivered at order

**D-DBEM**

MAXIMUM PRESSURE-PROTECTED PROPORTIONAL PRESSURE RELIEF VALVES

	connection type	size	max flow lt/min	max. pressure bar	card / supply voltage / max. current / control voltage
D-DBEM 10-3X/315YM	Plate type	NG 10	200	315	VT 2000/24VDC/0,8A/0-10V
D-DBEM 20-3X/315YM	Plate type	NG 20	400	315	VT 2000/24VDC/0,8A/0-10V
D-DBEM 30-3X/315YM	Plate type	NG 30	600	315	VT 2000/24VDC/0,8A/0-10V

50-100-200 bar pressure types can be delivered at order



**D-3DREP**

PROPORTIONAL PRESSURE REDUCING VALVES

	connection type	size	max flow lt/min	max. pressure bar	card / supply voltage / max. current / control voltage
D-3DREP 6C-1X/25A24NZ4	Plate type	NG 6	15 ( $\Delta p=50$ bar)	25	VT 3000/24VDC/0,8A/+9V
D-3DREP 6C-1X/16A24NZ4	Plate type	NG 6	15 ( $\Delta p=50$ bar)	16	VT 3000/24VDC/0,8A/+9V

**D-DRE**

PROPORTIONAL PRESSURE REDUCING VALVES

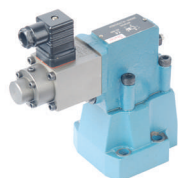
	connection type	size	max flow lt/min	max. pressure bar	card / supply voltage / max. current / control voltage
D-DRE 10-3X/315 YM	Plate type	NG 10	80	315	VT 2000/24VDC/0,8A/0-10V
D-DRE 20-3X/315 YM	Plate type	NG 20	200	315	VT 2000/24VDC/0,8A/0-10V
D-DRE 30-3X/315 YM	Plate type	NG 30	300	315	VT 2000/24VDC/0,8A/0-10V
D-DRE 10-3X/200 YM	Plate type	NG 10	80	200	VT 2000/24VDC/0,8A/0-10V
D-DRE 20-3X/200 YM	Plate type	NG 20	200	200	VT 2000/24VDC/0,8A/0-10V
D-DRE 30-3X/200 YM	Plate type	NG 30	300	200	VT 2000/24VDC/0,8A/0-10V

50-100-200 bar pressure types can be delivered at order



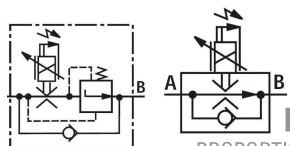
**D-DREM**

PROPORTIONAL PRESSURE REDUCING VALVES MAXIMUM PRESSURE-PROTECTED



	connection type	size	max flow lt/min	max. pressure bar	card / supply voltage / max. current / control voltage
D-DREM 10-3X/315 YM	Plate type	NG 10	80	315	VT 2000/24VDC/0,8A/0-10V
D-DREM 20-3X/315 YM	Plate type	NG 20	200	315	VT 2000/24VDC/0,8A/0-10V
D-DREM 30-3X/315 YM	Plate type	NG 30	300	315	VT 2000/24VDC/0,8A/0-10V
D-DREM 10-3X/200 YM	Plate type	NG 10	80	200	VT 2000/24VDC/0,8A/0-10V
D-DREM 20-3X/200 YM	Plate type	NG 20	200	200	VT 2000/24VDC/0,8A/0-10V
D-DREM 30-3X/200 YM	Plate type	NG 30	300	200	VT 2000/24VDC/0,8A/0-10V

**PROPORTIONAL FLOW CONTROL VALVES**



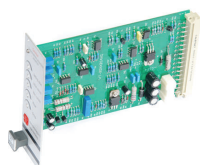
**D-2 FRE**

PROPORTIONAL FLOW CONTROL VALVES

2FRE10 and 2FRE16 types can be delivered at order

	normally closed with feedback	size	max flow lt/min	max. pressure (P,A,B) bar	card / supply voltage / max. current / control voltage
D-2 FRE 6 B-2X/25QRV	NC with feedback	NG 6	25	210	VT 5010/24VDC/2,2A/+9V
D-2 FRE 6 B-2X/6QRV	NC with feedback	NG 6	6	210	VT 5010/24VDC/2,2A/+9V

**PROPORTIONAL VALVES CARDS**

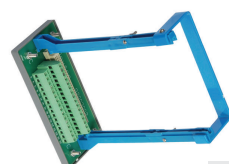


VT-8000

**D-VT**  
PROPORTIONAL VALVES CARDS

	supply voltage	card holder	control voltage flow lt/min	max. output current mA	which used together with
D-VT 2000 40	24VDC	VT 3002	0-10V	800 mA	DBET/DBE/DRE
D-VT 3000 S30	24VDC	VT 3002	+9V	800 mA	4WRZ 16-25-32 /3DREP 6 C
D-VT 3006 S30 R1 YEDEK (5 ramp time)	24VDC	VT 3002	+9V	800 mA	4WRZ alternative backup
D-VT 3013 S30	24VDC	VT 3002	+9V	1500 mA	4WRA 6
D-VT 3014 S30	24VDC	VT 3002	+9V	1500 mA	4WRA 10
D-VT 5003 BS20	24VDC	VT 3002	+9V	2200 mA	DBETR 6
D-VT 5005 S10	24VDC	VT 3002	+9V	1800 mA	4WRE 6
D-VT 5006 S10	24VDC	VT 3002	+9V	1800 mA	4WRE 10
D-VT 5004 S 2X/ R1E	24VDC	VT 3002	+9V	2200 mA	2 FRE 10-16
D-VT 5010 S 2X/ R1E	24VDC	VT 3002	+9V	2200 mA	2 FRE 6
D-VT 8000	24VDC		+9V	2500 mA	with 2 SELENOID- without feedback valves

European standart 32 pin ( 5.08x5.08 mm ) VT 3002 linked

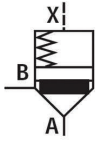


**D-VT**  
CARD HOLDER

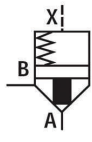
	supply voltage	NORM	pin number of model	card which used together with
D-VT 3002-2X/32D (KARTENHALTER)	-----	DIN 41 612	32 D model	VT2000-VT3000-VT3006-VT3013-VT3014

European standart 32 pin ( 5.08x5.08 mm ) VDE 0110 Gr B

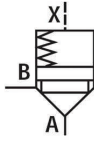
**LOGIC DIRECTIONAL CONTROL VALVES**



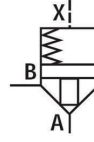
Area ratio  
14.3 : 1  
...B..D../...



Area ratio  
2 : 1  
...A..D../...



Area ratio  
14.3 : 1  
...B..E../...



Area ratio  
2 : 1  
...A..E../...



D:with Damping nose ( with cushion ) ; E:without Damping nose ( without cushion )

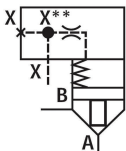


D-LC LOJIK VALFLER-7X Serisi	connection type	size	max flow lt/min	max. Pressure bar	area ratio/ with without cushion /opening pressure
D-LC 16 A10D-7X/ NEW SERIES	Cartridge type	NG 16	160	420	% 50 - with cushion-1bar
D-LC 16 A40D-7X/ NEW SERIES	Cartridge type	NG 16	160	420	% 50 - with cushion-4bar
D-LC 16 B10E-7X/ NEW SERIES	Cartridge type	NG 16	220	420	% 7 - without cushion-1bar
D-LC 25 A10D-7X/ NEW SERIES	Cartridge type	NG 25	470	420	% 50 - with cushion-1bar
D-LC 25 A40D-7X/ NEW SERIES	Cartridge type	NG 25	470	420	% 50 - with cushion-4bar
D-LC 25 B10E-7X/ NEW SERIES	Cartridge type	NG 25	570	420	% 7 - without cushion-1bar
D-LC 32 A40D-7X/ NEW SERIES	Cartridge type	NG 32	740	420	% 50 - with cushion-4bar
D-LC 32 B10E-7X/ NEW SERIES	Cartridge type	NG 32	800	420	% 7 - without cushion-1bar
D-LC 40 A40E-7X/ NEW SERIES	Cartridge type	NG 40	1500	420	% 50 - without cushion-4bar
D-LC 50 A40E-7X/ NEW SERIES	Cartridge type	NG 50	2750	420	% 50 - without cushion-4bar
D-LC 63 A40E-7X/ NEW SERIES	Cartridge type	NG 63	3000	420	% 50 - without cushion-4bar

Other logic valves can be delivered at order

D-LC LOGIC VALVES-6X SERIES	connection type	size	max flow lt/min	max. Pressure bar	area ratio/ with without cushion /opening pressure
D-LC 16 A10D-6X	Cartridge type	NG 16	160	420	% 50 - with cushion-1bar
D-LC 16 A40D-6X	Cartridge type	NG 16	160	420	% 50 - with cushion-4bar
D-LC 16 B10E-6X	Cartridge type	NG 16	220	420	% 7 - without cushion-1bar
D-LC 16 DB20E-6X	Cartridge type	NG 16	250	420	without cushion-2bar
D-LC 25 A10D-6X	Cartridge type	NG 25	470	420	% 50 - with cushion-1bar
D-LC 25 A40D-6X	Cartridge type	NG 25	470	420	% 50 - with cushion-4bar
D-LC 25 B10E-6X	Cartridge type	NG 25	570	420	% 7 - without cushion-1bar
D-LC 25 DB20D-6X	Cartridge type	NG 25	300	420	with cushion-2bar
D-LC 32 A40D-6X	Cartridge type	NG 32	740	420	% 50 - with cushion-4bar
D-LC 32 B10E-6X	Cartridge type	NG 32	800	420	% 7 - without cushion-1bar
D-LC 32 DB40D-6X	Cartridge type	NG 32	450	420	with cushion-4bar
D-LC 40 A40E-6X	Cartridge type	NG 40	1500	420	% 50 - without cushion-4bar
D-LC 40DB40E-6X	Cartridge type	NG 40	1000	420	without cushion-4bar
D-LC 50 A40E-6X	Cartridge type	NG 50	2750	420	% 50 - without cushion-4bar
D-LC 63 A40E-6X	Cartridge type	NG 63	3000	420	% 50 - without cushion-4bar

Other logic valves can be delivered at order



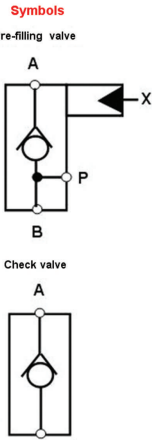
D-LFA LOGIC VALVE COVERS	connection type	size	max flow lt/min	max. Pressure bar	technical details
D-LFA 16 H2-6X/F	Plate type	NG 16		420	Strok limitli ( hız ayarlı )
D-LFA 25 H2-6X/F	Plate type	NG 25		420	Strok limitli ( hız ayarlı )
D-LFA 32 H2-6X/F	Plate type	NG 32		420	Strok limitli ( hız ayarlı )
D-LFA 40 H2-6X/F	Plate type	NG 40		400	Strok limitli ( hız ayarlı )

Cartridge type



**M Maxtor PRE-FILLING VALVE**

<b>D-</b>	<b>SF</b>						
Dexter							
Sandwich pre-filling and check valve							
Size 40	= 40						
Size 50	= 50						
Size 63	= 63						
Size 80	= 80						
Size 100	= 100						
Size 125	= 125						
Size 160	= 160						
Size 200	= 200						
Check valve	= 0						
Without decompression pre-filling vail	= 1						
With decompression pre-filling vail	= 2						
Serial number 10-19							
Seal material vitlon-silton as you want	= N						
Special version or							
(1) as you wish special production							



Size	Max. Flow (l/min)	Pilot Ratio
DN40	230	3,9
DN50	350	4,2
DN63	560	4,2
DN80	900	4,5
DN100	1400	4,3
DN125	2200	4,3
DN160	3600	4,3
DN200	6500	4



PRE-FILLING VALVE	size	pilot connection	$\Delta P=0,2$ bar flow lt/min	$\Delta P=0,4$ bar flow lt/min	max. Pressure bar
M-SF40-1-10/N	NG 40	1/4"	300	150	350
M-SF50-1-10/N	NG 50	1/4"	500	250	350
M-SF63-1-10/N	NG 63	1/4"	800	400	350
M-SF80-1-10/N	NG 80	1/4"	1200	400	350
M-SF100-1-10/N	NG 100	1/4"	1900	800	350
M-SF125-1-10/N	NG 125	1/4"	2800	2000	350

**M Maxtor TWO WAY BALL VALVE**



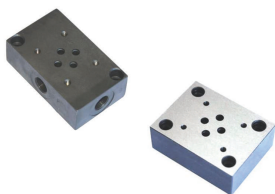
MAXTOR BALL VALVES	size	connection size	max. Pressure bar	color plating	technical details
M-KHB G1/8 DN4	DN 4	1/8"	500	yellow zinc	two way ball valve
M-KHB G1/4 DN6	DN 6	1/4"	500	yellow zinc	two way ball valve
M-KHB G3/8 DN10	DN 10	3/8"	500	yellow zinc	two way ball valve
M-KHB G1/2 DN15	DN 15	1/2"	500	yellow zinc	two way ball valve
M-KHB G3/4 DN20	DN 20	3/4"	350	yellow zinc	two way ball valve
M-KHB G 1 DN25	DN 25	1"	350	yellow zinc	two way ball valve
M-KHB G 1 1/4 DN 32	DN 32	1 1/4"	350	yellow zinc	two way ball valve
M-KHB G 1 1/2 DN40	DN 40	1 1/2"	350	yellow zinc	two way ball valve
M-KHB G 2 DN50	DN 50	2"	350	yellow zinc	two way ball valve

**M Maxtor THREE WAY BALL VALVE**

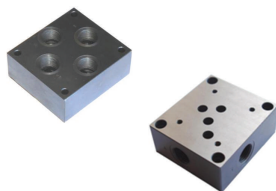
MAXTOR BALL VALVES 3 Yollu L type	size	connection size	max. Pressure bar	color plating	technical details
M-KHB 3K G3/8 DN10	DN 10	3/8"	500	yellow zinc	three way ball valve
M-KHB 3K G1/2 DN15	DN 15	1/2"	500	yellow zinc	three way ball valve
M-KHB 3K G3/4 DN20	DN 20	3/4"	500	yellow zinc	three way ball valve
M-KHB 3K G1 DN25	DN 25	1"	500	yellow zinc	three way ball valve



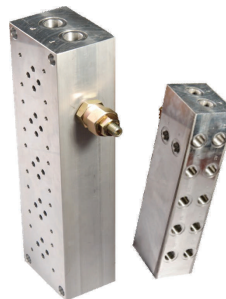
**M Maxtor HYDRAULIC VALVE PLATES**



D-Plate SP-02SX NG6 3/8"  
D-Plate SP-02BX NG6 3/8"



D-Plate SP-03SX NG10 1/2"  
D-Plate SP-03BX NG10 1/2"



ALUMINIUM PLATE

- NG 6 1 Unit Aluminium Plate
- NG 6 2 Unit Aluminium Plate
- NG 6 3 Unit Aluminium Plate
- NG 6 4 Unit Aluminium Plate
- NG 6 5 Unit Aluminium Plate
- NG 6 6 Unit Aluminium Plate

SX=Output on the side  
BX=Output on the bottom

**M Maxtor PROPORTIONAL PRESSURE FLOW VALVES**



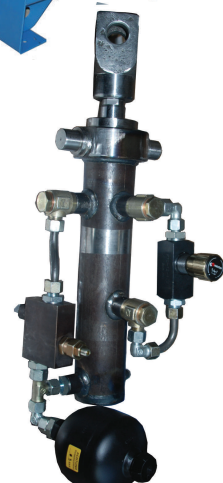
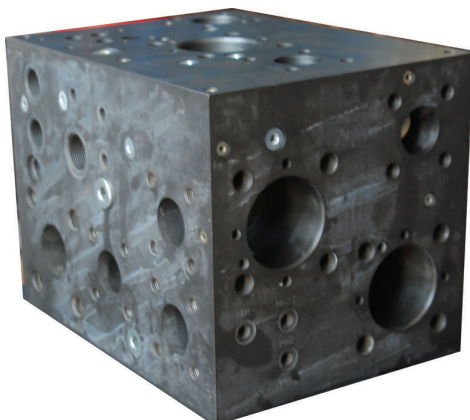
	Connection Type	Size	Max. Flow lt./min.	Max. Plessure (Bar)
"P-Q 80-140 ( 80 lt/min 140 bar )	Plate type	80	80	140
"PQ 125-250 ( 125 lt/min 250 bar )	Plate type	125	125	250
"PQ 250-250 ( 250 lt/min 250 bar )	Plate type	250	250	250

**M Maxtor LEVEL SWITCH**

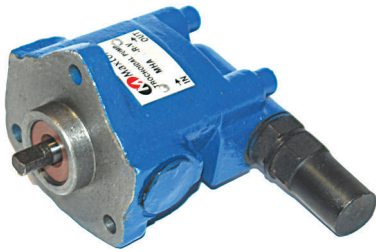


Max. Connection Value	W/VA	50
Max. I/O Ampere	A	1.5
Max. Conduction Ampere	A	1.5
Max. I/O Voltage	VDC	200
	VAC	250
Max. Strength Voltage	VDC	400
Operating Heat	°C	-20°C - +100°C
Float Material		PA
Tube Lenght		150, 200, 250, 300, 350, 400, 450, 500...mm.

**HYDRAULIC BLOCK DESIGN - HYDRAULIC UNIT DESIGN AND MONTAGE**



**TROCHOIDAL PUMPS**



<b>MHA SERIES</b>	displacement cc/rev	flow (1500 rpm) lt/min.	pressure bar	max. rpm	Port
MHA 10-R-V	1	1,5	5	3.000	1/8"
MHA 16-R-V	1,6	2,5	5	2.000	1/8"
MHA 25-R-V	2,5	3,7	5	1800	1/4"
MHA 40-R-V	4	6	5	1800	3/8"

<b>MHB SERIES</b>	displacement cc/rev	flow (1500 rpm) lt/min.	pressure bar	max. rpm	Port
MHB-2-27-R-V	2,7	4	25	2.800	1/2"
MHB-2-40-R-V	4	6	25	2.000	1/2"
MHB-2-60-R-V	6	9	25	2.000	1/2"
MHB-2-80-R-V	8	12	25	2.000	1/2"
MHB-2-100-R-V	10	15	25	2.000	3/4"
MHB-2-120-R-V	12	18	25	2.000	3/4"
MHB-2-160-R-V	16	24	25	2.000	3/4"
MHB-2-200-R-V	20	30	25	2.000	3/4"
MHB-3-80-R-V	8,0	12	25	2000	1"
MHB-3-100-R-V	10	15	25	2000	1"
MHB-3-120-R-V	12	18	25	2000	1"
MHB-3-160-R-V	16	24	25	2000	1"
MHB-3-210-R-V	21	31	25	2000	1"
MHB-3-266-R-V	26,6	40	25	2000	1"
MHB-3-330-R-V	33	50	25	2000	1"
MHB-3-420-R-V	42	63	25	2000	1"



<b>MHB SERIES</b>	displacement cc/rev	flow (1500 rpm) lt/min.	pressure bar	max. rpm	Port	
					in	out
MHB-4-530-R-V	53,0	80	25	2000	1¼"	1"
MHB-4-660-R-V	66	100	25	2000	1¼"	1"
MHB-4-840-R-V	84	125	25	2000	1¼"	1"
MHB-4-930-R-V	93	140	25	2000	1¼"	1"

**FEATURE:**

1. Allowable temperature -5°C to 80°C (Viton Seal to 200°C)
2. Allowable oil viscosity 10~500 mm<sup>2</sup>/s
3. Compactness and lightness
4. Good displace efficiency
5. Low noise and low pulse
6. Simple structure

**APPLICATION:**

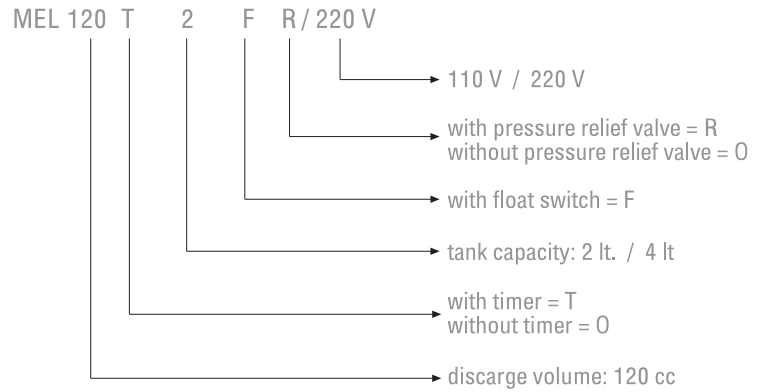
1. Machine lubricating system
2. Machine oil driving system
3. Burner injection system
4. Gear box lubricating system



MEMHA 40-R-V/120W 3P

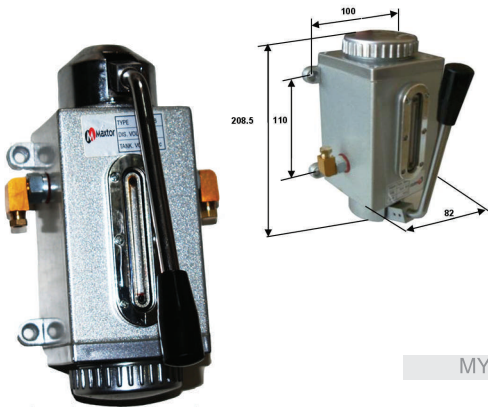
120 W 3 faze electric motor combo  
MHA 40-R-V high viscosity pump, 5,6 lt/min., max. 5 bar

**DIGITAL LUBRICATOR**



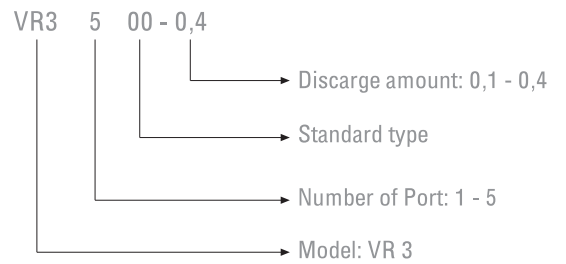
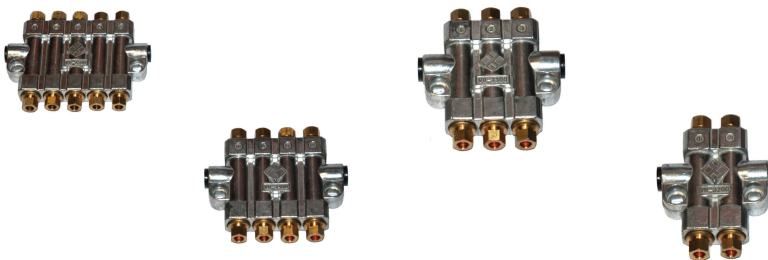
Pump working time can be adjusted between 1 - 999 sec.  
 Pump waiting time can be adjusted between 1 - 999 min.

**MANUEL LUBRICATION SYSTEM**



MY	oil tank volume lt.	flow cc/stroke	distributor output measure	max. Pressure bar	technical details
MY-8	0,5	8	M10x1 Ø6 pipe	15	sleeve, spring return

**QUANTITATIVE OIL DISTRIBUTOR**



**ADJUSTABLE OIL DISTRIBUTOR**



Operating pressure: 1-15 bar  
 Oil viscosity: 10-500 cst

DB 4 : 4 ports  
 DB 6 : 6 ports  
 DB 8 : 8 ports



cooling  
performance...

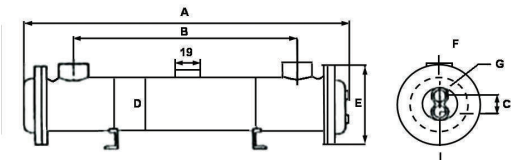
## AIR HEAT EXCHAGERS



MAXTOR AIR COOLERS	at $\Delta t=20\text{ }^{\circ}\text{C}$ cooling kcal/hours	at $\Delta t=30\text{ }^{\circ}\text{C}$ cooling kcal/hours	max oil flow lt/min	Max. Pressure bar	oil connection size
M-ACR-20 2700d/d 220V AC 0.09A Monofaze	700	1.100	35	10	1/2" BSP
M-4010 M 24VDC	937	1.387	40	24	1/2" BSP
M-4010 M 220VAC	937	1.387	40	24	1/2" BSP
M-4015 M 24VDC	2.325	4.050	80	24	1" BSP
M-4015 M 220VAC	2.325	4.050	80	24	1" BSP
M-4020 M 24VDC	3.000	4.500	100	24	1" BSP
M-4020 M 220VAC	3.000	4.500	100	24	1" BSP
M-4024 M 24VDC	5.650	8.450	120	24	1" BSP
M-4024 M 220VAC	5.650	8.450	120	24	1" BSP
M-4030 M 24VDC	7.875	12.000	140	24	1" BSP
M-4030 M 220VAC	7.875	12.000	140	24	1" BSP
M-4040 M 24VDC	10.000	15.000	160	24	1 1/4" BSP
M-4040 M 220VAC	10.000	15.000	160	24	1 1/4" BSP
M-4050 M 220VAC	13.500	20.000	180	24	1 1/4" BSP
M-4030 2MS ÇİFT FANLI 24VDC / 220VAC	15.500	23.460	260	24	1 1/4" BSP
M-4040 2MS ÇİFT FANLI 24VDC / 220VAC	19.375	29.375	320	24	1 1/2" BSP
M6	22.360	30.100	200	12	1 1/4" BSP
M8	32.680	43.860	250	12	1 1/2" BSP
M10	116.100	154.800	500	10	SAE 3"

The pressure of coolers are max. 25 bar they have been tested under 36 bar pressure  
Italian IMIT TC2 ADJUSTABLE termostat is standart.

## WATER HEAT EXCHAGERS



OR	A	B	C	D	E	F	G	Exchange	Flow	Weight
	(mm)	(mm)	(mm)	(mm)	(mm)			Tube	(lt/dak.)	(kg)
M-OR-60 L	465	295	40	89,10	120	3/4"	3/4"	22	60	8
M-OR-100 L	540	370	55	114,30	140			26	100	12
M-OR-150 L	580	375	65	139,80	170			1 1/4"	42	150
M-OR-250 L	800	600				250	22			
M-OR-350 L	1.205	1.000	85	165,20	196	2"	1 1/2"	58	350	30
M-OR-600 L	1.225	970							600	40
M-OR-800 L	1.725	1.470							800	50
M-OR-1000 L	2.140	1.890	85	165,20	196	2"	1 1/2"	58	1000	60
M-OR-1200 L	2.520	2.270							1200	70

MAXTOR WATERY COOLERS	at $\Delta t=20\text{ }^{\circ}\text{C}$ cooling kcal/hours	at $\Delta t=30\text{ }^{\circ}\text{C}$ cooling kcal/hours	max oil flow lt/min	Max. Pressure bar	oil-water connection size
M-OR-60 L	4200	7000	60	10	3/4" - 3/4"
M-OR-100 L	7500	12000	100	10	3/4" - 3/4"
M-OR-150 L	12000	19000	150	10	1 1/4" - 3/4"
M-OR-250 L	18000	30000	250	10	1 1/4" - 3/4"
M-OR-350 L	24000	40000	350	10	1 1/4" - 3/4"
M-OR-600 L	42000	62000	600	10	2" - 1 1/2"
M-OR-800 L	60000	90000	800	10	2" - 1 1/2"

The entrance of water is sideways and the entrance of oil is above