



[www.kianhydraulic.com](http://www.kianhydraulic.com)

# INDUSTRIAL HYDRAULICS

**PRODUCT OVERVIEW**



**D**UPLOMATIC  
MOTION SOLUTIONS

# ABOUT THIS GUIDE

This guide is intended for a smart overview of our industrial hydraulics and let you find quickly the product you need.

data sheet ref.

main characteristics, available versions and options are shown together for quick comparison.

A brief description of the features follows.

The highlighted letter that precedes the description is the same letter that identifies the option in the identification code, in the data sheet, for an easy reference.

Not all the options are available for all versions: always verify technical data, details and availability in the technical data sheet.

You can find data sheets always up-to-date in various languages by scanning this QR code with your smartphone



or on our webpages at:

[www.duplomatic.com/products](http://www.duplomatic.com/products)

MODEL CODE	E4	DSP7	ES	DSP10
CATALOGUE	41 400	41 420	41 400	41 440
SIZE (INCH)	17	16	25	32
CETOP	05, 805	07	08	10
ISO 4401	05	07	08	10
TYPE	solenoid	solenoid	solenoid	solenoid
p max	120 bar	100 bar	280 bar	280 bar
p min High pressure vers.	420 bar	420 bar	420 bar	-
Q max	120 l/min	100 l/min	600 l/min	1100 l/min
SPOLS	S1, S2, S3, S4	■	■	■
S1, S3A	■	■	■	■
S6-N6, S12	■	■	■	■
S20, S21	■	■	■	■
SA3, S81	■	■	■	■
SA2/S82 To SA4/S84	■	■	■	■
TA1, TR	■	■	■	■
TA02, TR02	■	■	■	■
TA21, TR21	■	■	■	■
HC, R002, R0002	■	■	■	■
COIL TYPE	D12, D04	■	■	■
D48, D120, D200	■	■	■	■
A3C-A3E, A310, A300	■	■	■	■
F110, F220	■	■	■	■
COIL CONNECTIONS	K1	■	■	■
X7, D12 and D24 coils	■	■	■	■
MANUAL OVERRIDE	CM	■	■	■

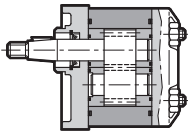
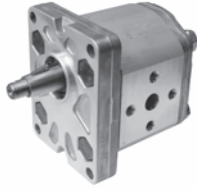
**LEGEND**  
 MONITORED - see dedicated section at page «Resonance»  
 EXPLOSION PROOF - see catalogue 41515  
 HYDRAULIC OPERATED VERSIONS described in the valves datasheets  
 HIGH PRESSURE VERSION   
**COIL TYPE**  
 D12, D04 Internal with pressure reducing - Internal with built-in backpressure valve - External (pressure application cases on valve datasheets)  
 D48, D120, D200 Stroke control - Shifting speed control - Stroke + shifting control - FF restrictor subplate  
**OPTIONS**  
 ALTERNATIVE SURFACE FINISHES: Zinc-Nickel (salt spray resistance up to 600 hours)

The content of this *Product Overview* is provided for information only and without responsibility. Duplomatic MS makes no representations about misprint, completeness or timeliness of the information in this literature. Duplomatic MS may, in its sole discretion, revise the information contained herein at any time without notice.

The reproduction of the contents of this manual, in whole or in part, without written permission of Duplomatic MS SpA is prohibited.



PUMPS .....	2
VALVES, PRESSURE .....	10
VALVES, FLOW .....	12
VALVES, CARTRIDGES .....	13
VALVES, DIRECTIONAL CONTROL .....	14
VALVES, CHECK .....	23
LOGIC ELEMENTS .....	24
VALVES, STACK .....	26
VALVES, PROPORTIONAL .....	30
CYLINDERS.....	40
ELECTRONICS .....	43
ACCESSORIES.....	46



MODEL CODE		GP* - external gear		
CATALOGUE		11 100		
PUMP SIZE	DISPLACEMENT	MAX FLOW RATE at 1500 rpm	MAX OPERATING PRESSURE	MAX ROTATION SPEED
	[cm <sup>3</sup> /rev]	[l/min]	[bar]	[rpm]
<b>GP1</b>				
0013	1,3	2,0	250	6000
0020	2,0	3,0		
0027	2,7	4,0		
0034	3,4	5,1		
0041	4,1	6,1	230	4000
0051	5,1	7,6		
0061	6,1	9,1		
0074	7,4	11,1	200	3200
0091	9,1	13,6	180	2600
<b>GP2</b>				
0070	7,0	10,5	250	4000
0095	9,5	14,2		3000
0113	11,3	16,9	230	4000
0140	14,0	21,0		
0158	15,8	23,7	210	3600
0178	17,8	26,7		
0208	20,8	31,2	180	3200
0234	23,4	35,1		3000
0279	27,9	41,8	170	2500
<b>GP3</b>				
0207	20,7	31,0	230	3500
0225	22,5	33,7		
0264	26,4	39,6		
0337	33,7	50,5		
0394	39,4	59,1	220	2800
0427	42,7	64,0	210	
0514	51,4	77,1	200	2400
0600	60,0	90,0	190	2800
0696	69,6	104,4	170	2500
0776	77,6	116,4	160	2300
0876	87,6	131,4	140	2000

### ■ FEATURES ++

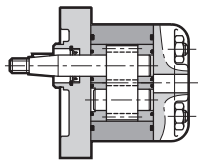
ROTATION: **R** clockwise - **L** counterclockwise - **D** reversible (for single pumps only)

MOUNTING FLANGE: **9** rectangular shape 4 holes - **0** SAE J744 2 holes

SHAFT END: **7** tapered keyed - **5** cylindrical keyed - **0** cylindrical keyed SAE-J744 - **1** SAE-J744 splined

HYDRAULIC CONNECTIONS: **F** flanged - **B** BSP threaded ports - **U** UNF threaded ports

OTHER: see catalogue for **F/M/R** through shaft - **H** high pressure



MODEL CODE

**1P - external gear**

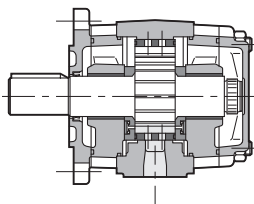
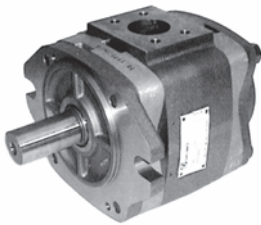
CATALOGUE

**11 110**

PUMP SIZE	DISPLACEMENT	MAX FLOW RATE at 1500 rpm	MAX OPERATING PRESSURE	MAX ROTATION SPEED
	[cm <sup>3</sup> /rev]	[l/min]	[bar]	[rpm]
<b>1P</b>				
1,6	1,1	1,6	230	6000
2	1,3	2,0		
2,5	1,6	2,4		
3,3	2,1	3,2		
4,2	2,7	4,0		
5	3,2	4,8	210	5000
5,8	3,7	5,6		4500
6,7	4,2	6,4		4000
7,5	4,8	7,2	190	3500
9,2	5,8	8,7		3000
11,5	8,0	11,9	160	2100

**FEATURES ++**

ROTATION: clockwise. MOUNTING FLANGE: rectangular shape 4 holes. SHAFT END: tapered keyed  
HYDRAULIC CONNECTIONS: BSP threaded



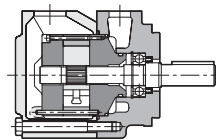
MODEL CODE

**IGP\* - internal gear**

CATALOGUE

**12 100**

PUMP SIZE	DISPLACEMENT	MAX FLOW RATE at 1500 rpm	MAX OPERATING PRESSURE	MAX ROTATION SPEED
	[cm <sup>3</sup> /rev]	[l/min]	[bar]	[rpm]
<b>IGP3</b>				
003	3,6	5,4	330	3600
005	5,2	7,8		
006	6,4	9,6		
008	8,2	12,3		
010	10,2	15,3		
<b>IGP4</b>				
013	13,3	19,9	330	3600
016	15,8	23,7		3400
020	20,7	31,0		3200
025	25,4	38,1	300	3000
032	32,6	48,9	250	2800
<b>IGP5</b>				
032	33,1	49,6	315	3000
040	41,0	61,5		2800
050	50,3	75,4	280	2500
064	64,9	97,3	230	2200
<b>IGP6</b>				
064	64,1	96,1	300	2600
080	80,7	121,0	280	2400
100	101,3	151,9	250	2100
125	126,2	189,3	210	1800



## MODEL CODE

## IGP - internal gear

## CATALOGUE

## 12 100

PUMP SIZE	DISPLACEMENT	MAX FLOW RATE at 1500 rpm	MAX OPERATING PRESSURE	MAX ROTATION SPEED
	[cm <sup>3</sup> /rev]	[l/min]	[bar]	[rpm]

## IGP7

125	125,8	188,7	300	2200
160	160,8	241,2	280	2000
200	202,7	304,0	250	1800
250	251,7	377,5	210	

## ■FEATURES ++

ROTATION: **R** clockwise - **L** counterclockwise

MOUNTING FLANGE: **0** SAE 2 - **1** SAE 4 (IGP7 only). SHAFT END: cylindrical keyed

HYDRAULIC CONNECTIONS: flanged SAE J518 c code 61

OTHER: see catalogue for **DOUBLE PUMPS**

## MODEL CODE

## DF\* - fixed displacement

## CATALOGUE

## 13 100

PUMP SIZE	DISPLACEMENT	MAX FLOW RATE at 1500 rpm	MAX OPERATING PRESSURE	MAX ROTATION SPEED
	[cm <sup>3</sup> /rev]	[l/min]	[bar]	[rpm]

## DFP1

05	18,0	26,1	210	2700
08	27,4	39,4		
11	36,4	52,6		
12	39,5	58,7	160	
14	45,9	69,6	140	

## DFP2

12	40,1	58,8	210	2500
14	45,4	65,7		
17	55,2	80,2		
19	60,1	88,7		
21	67,5	99,8		

## DFP3

21	69,0	101,4	210	2400
25	81,6	120,1		
30	97,7	141,2		
35	112,7	167,2		
38	121,6	177,3		

## DFP4

42	138,6	203,4	175	2200
47	153,5	222,7		
50	162,2	234,0		
57	183,4	267,0		
60	193,4	285,0		

## ■FEATURES ++

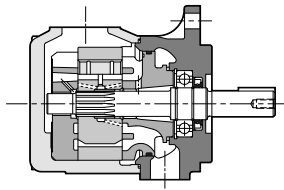
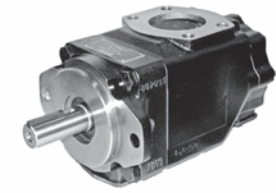
TYPE: **P** single pump - **DP** double pump - **C** shaft end cartridge - **CC** cover end cartridge

ROTATION: **R** clockwise - **L** counterclockwise

MOUNTING FLANGE: ISO. SHAFT END: cylindrical keyed. Other upon request

HYDRAULIC CONNECTIONS: SAE J518 flanged.

OTHER: see catalogue for **OUTLET PORTS POSITION**



## MODEL CODE

## FV6 - fixed displacement

## CATALOGUE

## 13 110

PUMP SIZE	DISPLACEMENT	MAX FLOW RATE at 1500 rpm	MAX OPERATING PRESSURE	MAX ROTATION SPEED
	[cm <sup>3</sup> /rev]	[l/min]	[bar]	[rpm]

## FV6C

03	10,8	16,2	240	2800
05	17,2	25,8		
06	21,3	31,9		
08	26,4	39,6		
10	34,1	51,1		
12	37,1	55,6		
14	46,0	69,0		
17	58,3	87,4		
20	63,8	95,7		
22	70,3	105,4		
25	79,3	118,9		
28	88,8	133,2		
31	100,0	150,0	160	2500

## FV6D

14	47,6	71,4	210	2500		
17	58,2	87,3				
20	66,0	99,0				
24	79,5	119,3				
28	89,7	134,6				
31	98,3	147,5				
35	111,0	166,5				
38	120,3	180,5				
42	136,0	204,0				
45	145,7	218,6				
50	158,0	237,0			160	2200

## FV6E

42	132,3	198,5	210	2200
45	142,4	213,6		
50	158,5	237,8		
52	164,8	247,2		
57	179,8	269,6		
62	196,7	295,1		
66	213,3	320,0		
72	227,1	340,0		
85	269,0	403,0	80	2000

## ■ FEATURES ++

PUMP SIZE: **C** from 10.8 to 100 cm<sup>3</sup>/rev - **D** from 47.6 to 158 cm<sup>3</sup>/rev - **E** from 132.3 to 269 cm<sup>3</sup>/rev

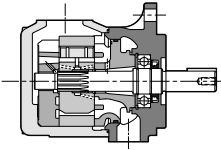
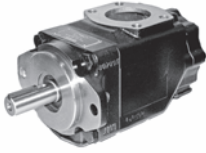
ROTATION: **R** clockwise - **L** counterclockwise

MOUNTING FLANGE: SAE B J744, SAE C J744

SHAFT END: cylindrical keyed SAE, non-SAE, involute spline SAE, non-SAE. See catalogue.

HYDRAULIC CONNECTIONS: SAE J518 flanged.

**FV67 DOUBLE AND TRIPLE** pumps available.



MODEL CODE

**FV7 - fixed displacement**

CATALOGUE

**13 120**

PUMP SIZE	DISPLACEMENT	MAX FLOW RATE at 1500 rpm	MAX OPERATING PRESSURE	MAX ROTATION SPEED
	[cm <sup>3</sup> /rev]	[l/min]	[bar]	[rpm]
<b>FV7B</b>				
02	5,8	8,7	320	3600
03	9,8	14,7		
04	12,8	19,2		
05	15,9	23,9		
06	19,8	29,7		
07	22,5	33,8		
08	24,9	37,4		
10	31,8	47,7		
12	41,0	61,5	275	3000
15	50,0	75,0	240	

**FV7D**

14	44,0	66,0	250	3000
17	55,0	82,5		
20	66,0	99,0		
22	70,3	105,5		
24	81,1	121,7		
28	90,0	135,0		
31	99,2	148,8		
35	113,4	170,1		
38	120,6	180,9	2800	
42	137,5	206,3		230

**FEATURES ++**

PUMP SIZE: **B** from 5.8 to 50 cm<sup>3</sup>/rev - **D** from 44 to 137.5 cm<sup>3</sup>/rev

ROTATION: **R** clockwise - **L** counterclockwise; MOUNTING FLANGE: SAE B J744, SAE C J744, ISO 3019-2

SHAFT END: cylindrical keyed SAE, non SAE, ISO; involute spline SAE. See catalogue.

HYDRAULIC CONNECTIONS: SAE J518 flanged.

MODEL CODE

**PVD - direct variable displacement**

CATALOGUE

**14 100**

PUMP SIZE	DISPLACEMENT	MAX FLOW RATE at 1450 rpm	MAX OPERATING PRESSURE	MAX ROTATION SPEED
	[cm <sup>3</sup> /rev]	[l/min]	[bar]	[rpm]
<b>PVD</b>				
25	17,9	25,0	120	1800
30	22,8	30,0	100	
37	28,1	36,0		
45	34,5	45,6		
48	34,5	47,5		
56	42,8	58,0	80	
72	53,1	72,5		
90	69,0	91,3		
115	86,2	116,0		
145	105,5	145,0		

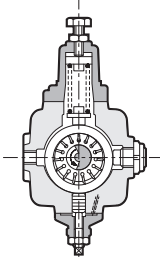
**FEATURES ++**

ROTATION: clockwise. MOUNTING: **K** rectangular shape 4 holes w. conical keyed shaft end.

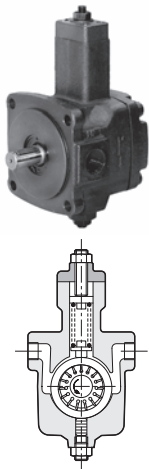
**H** ISO 3019/2 w. cylindrical keyed shaft end. HYDRAULIC CONNECTIONS: BSP threaded/SAE flange

PRESSURE COMPENSATOR: mechanical, direct

OTHER: **Q** flow adjuster - see catalogue for **MULTIPLE PUMPS**







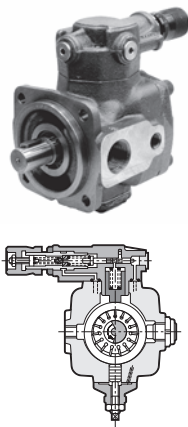
MODEL CODE

**PVE - direct variable displacement**

CATALOGUE <b>14 110</b>				
PUMP SIZE	DISPLACEMENT	MAX FLOW RATE at 1800 rpm	MAX OPERATING PRESSURE	MAX ROTATION SPEED
	[cm <sup>3</sup> /rev]	[l/min]	[bar]	[rpm]
<b>PVE</b>				
006	6,6	12,0	70	1800
011	11,1	20,0		
016	16,6	30,0		
023	22,2	40,0		

**FEATURES ++**

ROTATION: clockwise. MOUNTING FLANGE: **9** rectangular shape 4 holes - **0** SAE J744 2 holes  
 SHAFT END: cylindrical keyed SAE-J744. HYDRAULIC CONNECTIONS: BSP threaded  
 PRESSURE COMPENSATOR: mechanical, direct. **PC2** up to 35 bar - **PC3** up to 70 bar



MODEL CODE

**PVA - piloted variable displacement**

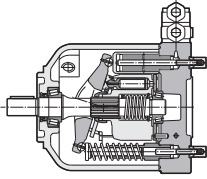
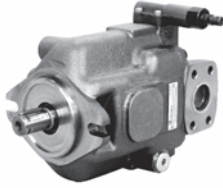
CATALOGUE <b>14 200</b>				
PUMP SIZE	DISPLACEMENT	FLOW RATE at 1450 rpm	MAX OPERATING PRESSURE	MAX ROTATION SPEED
	[cm <sup>3</sup> /rev]	[l/min]	[bar]	[rpm]
<b>PVA</b>				
22	16	23,2	160	1800
28	20	29,0		
35	25	36,2		
45	31,5	45,6	160	1800
56	40	58,0		
72	50	72,5	150	
90	63	91,3		
115	80	116,0		
145	100	145,0		

**FEATURES ++**

ROTATION: clockwise. MOUNTING FLANGE: ISO 3019/2 4 holes  
 SHAFT END: cylindrical keyed. HYDRAULIC CONNECTIONS: BSP threaded / SAE flanged  
 PRESSURE COMPENSATOR: hydraulic, piloted.  
 OTHER: **Q** flow adjuster - **M** Dual pressure value selection device - see catalogue for **MULTIPLE PUMPS**

# PUMPS

## AXIAL-PISTON PUMPS



### MODEL CODE **VPPM - medium pressures**

CATALOGUE		16 100		
PUMP SIZE	MAX DISPLACEMENT	FLOW RATE at 1500 rpm	MAX OPERATING PRESSURE	MAX ROTATION SPEED
	[cm <sup>3</sup> /rev]	[l/min]	[bar]	[rpm]
<b>VPPM</b>				
029	29	43,5	280	3000
046	46	69,0		2600
073	73	109,5		2200
087	87	131,9	250	1850

#### ■ FEATURES ++

ROTATION: **R** clockwise - **L** counterclockwise

MOUNTING FLANGE: **5** ISO 3019/2 - **0** SAE J744 2 holes

SHAFT END: **5** cylindrical keyed ISO 3019-2 - **0** cylindrical keyed SAE J744 - **1** SAE J744 splined

HYDRAULIC CONNECTIONS: **S** SAE flange w. metric bolts suction/delivery, drainage BSP threaded

**T** SAE flange w. UNF bolts suction/delivery, drainage UNF threaded

CONTROLS: **PC** pressure - **PCR** remote pressure control - **PCX** with external pressure control

devices - **PQC** pressure and flow rate - **PQCE5** integrated proportional flow and pressure control

**PQNC** power - **PQNCE5** power, with integrated proportional flow and pressure control

OTHER: see catalogue for **MULTIPLE PUMPS**

### MODEL CODE **VPPL - low-medium pressures**

CATALOGUE		16 200		
PUMP SIZE	MAX DISPLACEMENT	FLOW RATE at 1500 rpm	MAX OPERATING PRESSURE	MAX ROTATION SPEED
	[cm <sup>3</sup> /rev]	[l/min]	[bar]	[rpm]
<b>VPPL</b>				
008	8	12	210	2000
016	16	24		
022	22	33		
036	36	54		
046	46	69		
070	70	105	280	1800
100	100	150		

#### ■ FEATURES ++

ROTATION: clockwise

MOUNTING FLANGE: **0** SAE-2 (VPPL 008, 016, 022, 036, 046) - **1** SAE-4 (VPPL 070, 100)

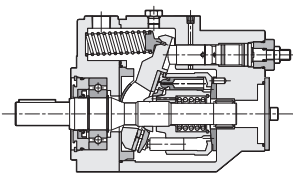
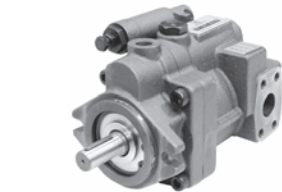
SHAFT END: cylindrical keyed SAE-J744

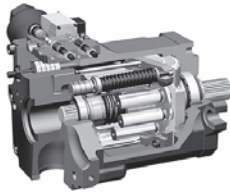
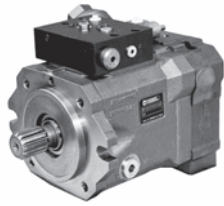
HYDRAULIC CONNECTIONS: **S** SAE flange w. metric bolts suction/delivery, drainage BSP threaded

**B** BSP threaded ports (VPPL-008)

CONTROLS: **PC5, PC6** pressure - **PCR** remote pressure control - **PCX5, PCX6** with external

pressure control devices - **PQC** pressure and flow rate





## MODEL CODE

## HPR - high pressures

## CATALOGUE

## 16 300

PUMP SIZE	MAX DISPLACEMENT	FLOW RATE at 1500 rpm	MAX OPERATING PRESSURE	MAX ROTATION SPEED
	[cm <sup>3</sup> /rev]	[l/min]	[bar]	[rpm]
<b>HPR</b>				
055	55,0	82,5	420	2700
075	75,9	113,9		2500
105	105,0	157,5		2500
135	135,7	203,5		2350
165	165,6	248,2		2200
210	210,1	315,5		2100
280	281,9	422,9		2000

## ■ FEATURES ++

ROTATION: **R** clockwise

MOUNTING FLANGE: SAE J744 2 holes; SAE J744 4 holes for HPR210 and 280

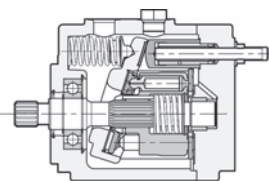
SHAFT END: SAE J744 splined - Cylindrical keyed upon request

HYDRAULIC CONNECTIONS: flange fittings - SAE 3000 suction / SAE 6000 pressure

POWER TAKE-OFF: **A00** SAE A flange, no shaft coupling (single pump, std).

See catalogue for power take-off / through drive shaft available couplings.

CONTROLS: **LP6** load sensing w. pressure cut-off - **TL2** load sensing w. power control (HPR105, 135, 210 and 280 only) - **ET6** continuous displacement control w. power limiter and pressure cut-off (HPR105, 135, 210 and 280 only) **D12K2** or **D24K2** available coils.



## MODEL CODE

## AP1V - medium-high pressures

## CATALOGUE

## 16 500

PUMP SIZE	MAX DISPLACEMENT	FLOW RATE at 1500 rpm	MAX OPERATING PRESSURE	MAX ROTATION SPEED
	[cm <sup>3</sup> /rev]	[l/min]	[bar]	[rpm]
<b>AP1V</b>				
015	14,9	22,4	280	3000
021	20,9	31,6		
035	35,3	52,9		
045	45,2	67,8		
065	65,9	98,9		

## ■ FEATURES ++

ROTATION: **R** clockwise - **L** counterclockwise

MOUNTING FLANGE: SAE J744 2 holes

SHAFT END: **0** cylindrical keyed SAE J744 - **1** SAE J744 splined

HYDRAULIC CONNECTIONS: **R** SAE flanges on rear - **S** SAE flanges on side;

for AP1V-015 only: **R** BSP ports on rear - **S** BSP ports on side

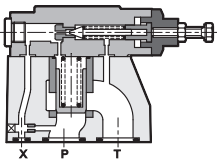
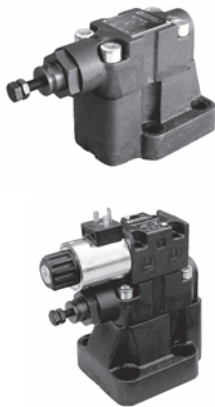
POWER TAKE-OFF: **000** no shaft coupling (single pump, std). PTO available for pumps AP1V-035, 045 and 065 with side ports only. See catalogue.

CONTROLS: **PC** pressure - **PCR** remote pressure control - **PQC** pressure and flow rate

# PRESSURE VALVES

## IN-LINE

## SUBPLATE



MODEL CODE	CD1-W	RM2-W	RM3-W	RQ5-W	RQM5-W	RQ7-W	RQM7-W
CATALOGUE	21 200	21 210	21 210	21 220	21 230	21 220	21 230
SIZE (ND)	6	8	10	15		25	
port THREAD	1/4" NPT	3/8" BSP	1/2" BSP	P: 3/4" BSP	T: 1" BSP	P: 1 1/4" BSP	T: 1 1/2" BSP
TYPE	piloting	relief	relief	relief	relief venting	relief	relief venting
p max	350 bar						
Q max	3 l/min	50 l/min	75 l/min	250 l/min		400 l/min	

### PRESSURE ADJ. RANGE

up to 70 bar	■	■	■	■	■	■	■
up to 140 bar	■	■	■				
up to 210 bar	■	■	■	■	■	■	■
up to 350 bar	■	■	■	■	■	■	■

### FEATURES ++

VENTING TYPE: **A, B, C, D, G** (RQM\* only)

OPTIONS: **M** adjustment knob; **CM** boot (RQM\* only)

COILS: power supply **DC** 12V, 24V, 48V, 110V, 220V; **AC** 12V, 24V, 48V, 110V, 220V; F110, F220 - DIN 43650 connector

MODEL CODE	RQ3-P	RQM3-P	RQ5-P	RQM5-P	RQ7-P	RQM7-P
CATALOGUE	21 300	21 310	21 300	21 310	21 300	21 310
SIZE (ND)	10		25		32	
SIZE ISO 6264	06		08		10	
TYPE	relief	relief venting	relief	relief venting	relief	relief venting
p max	350 bar					
Q max	200 l/min		400 l/min		500 l/min	

### FEATURES ++

EXPLOSION PROOF **K\*** see catalogue 21 515

VENTING TYPE: **A, B, C, D, G** (RQM\* only)

COILS: power supply **DC** 12V, 24V, 48V, 110V, 220V; **AC** 12V, 24V, 48V, 110V, 220V; F110, F220 - DIN 43650 connector

PRESSURE ADJ. RANGE: **3** up to 70 bar - **5** up to 210 bar - **7** up to 350 bar

OPTIONS: **M** adjustment knob; **CM** boot (solenoid op. only)

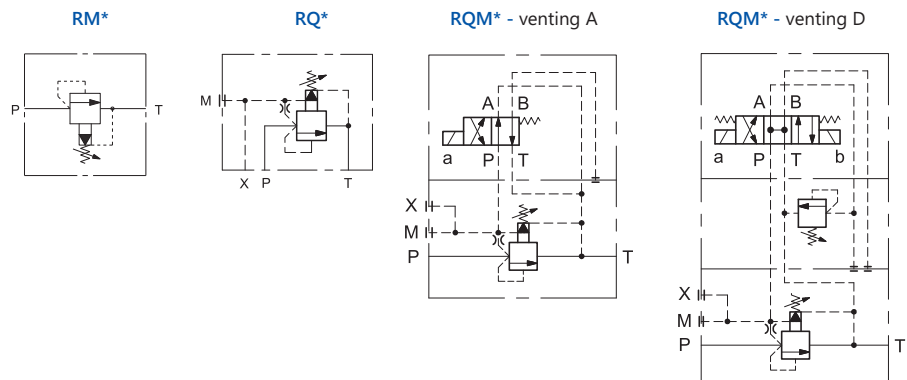
### VENTING TYPE

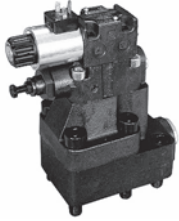
**A** venting with de-energized solenoid - **B** venting with energized solenoid

**C** two pressure settings, highest with energized solenoid - **D** two pressure settings, venting with de-energized solenoid

**G** three pressure settings, highest with de-energized solenoid

### SYMBOLS





MODEL CODE	MRQA			RQR5-P		RQRM5-P		RQR7-P		RQRM7-P	
	MRQA/C	RQR3-P	RQRM3-P	RQA5-P	RQAM5-P	RQA7-P	RQAM7-P				
CATALOGUE	21 400	21 410	21 420	21 410	21 420	21 410	21 420				
SIZE (ND)	6	10		25		32					
SIZE ISO 6264	03	06		08		10					
TYPE	unloading	unloading	unloading + venting	unloading	unloading + venting	unloading	unloading + venting				
p max	350 bar										
Q max	40 l/min	200 l/min		400 l/min		500 l/min					

#### PRESSURE ADJ. RANGE

up to 70 bar	■	■	■	■	■	■	■				
up to 210 bar	■	■	■	■	■	■	■				
up to 280 bar	■	■	■	■	■	■	■				

#### VERSIONS

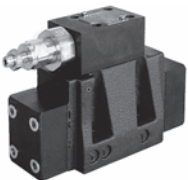
R remote piloting - A or /C embedded check valve (w.subplate - non ISO mounting)

#### FEATURES++

PUMP SWITCH: 1 75% of set value - 2 63% of set value (no MRQA)

OPTIONS: I internal drainage (RQ\*M-P only) - M adjustment knob - CM boot (solenoid op. only)

COILS: power supply DC 12V, 24V, 48V, 110V, 220V; AC 12V, 24V, 48V, 110V, 220V; F110, F220 - DIN 43650 connector



MODEL CODE	Z3-P		Z5-P		ZC2		DZC5		DZC7		DZC8	
	Z3-P	Z5-P	Z3-P	Z5-P	ZC2	ZC2	DZC5R	DZC5R	DZC7	DZC7	DZC8	DZC8
CATALOGUE	22 300	22 300	22 300	22 300	24 300	24 300	24 310	24 310	24 310	24 310	24 310	24 310
SIZE (ND)					6	6	10	10	16	16	25	25
SIZE (ISO)	5781-06		5781-08		5781-03	5781-03	P05, 4401-05		4401-07		4401-08	
TYPE	reducing 2-way		reducing 2-way		reducing + relieving		reducing + relieving		reducing + relieving		reducing + relieving	
p max	250 bar				250 bar		350 bar		350 bar		350 bar	
Q max	40 l/min	40 l/min	110 l/min	110 l/min	25 l/min	25 l/min	150 l/min	150 l/min	300 l/min	300 l/min	500 l/min	500 l/min

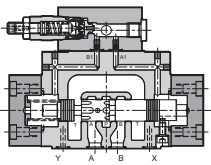
#### PRESSURE ADJ. RANGE

up to 70 bar					■	■	■	■	■	■	■	■
up to 140 bar					■	■	■	■	■	■	■	■
up to 210 bar	■	■	■	■	■	■	■	■	■	■	■	■

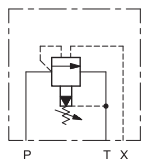
#### FEATURES++

Z\*-P OPTIONS: R reduced drainage - C check valve U→E w. cracking pressure 0.5 bar

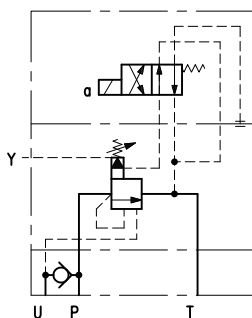
DZC\* OPTIONS: I internal pilot/drainage - E external pilot/drainage - KI adjustment knob



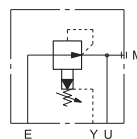
RQR\*-P



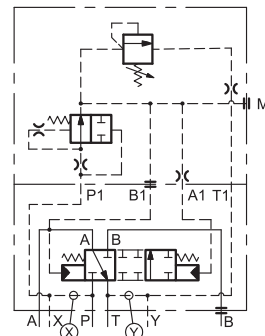
RQAM\*-P

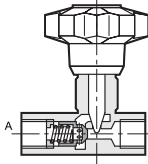
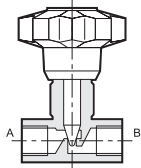


Z\*-P



DZC\*



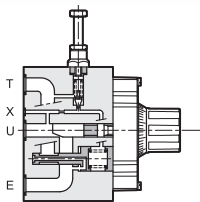
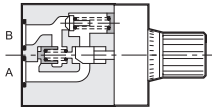


MODEL CODE **RS\* - throttle**

CATALOGUE	31 200						
*	2	3	4	5	6	7	8
port THREAD	1/4" BSP	3/8" BSP	1/2" BSP	3/4" BSP	1" BSP	1 1/4" BSP	1 1/2" BSP
TYPE	throttle						
p max	400				320		
Q nom	15	30	50	80	150	200	220

MODEL CODE **RSN\* - throttle check**

CATALOGUE	31 210						
*	2	3	4	5	6	7	8
port THREAD	1/4" BSP	3/8" BSP	1/2" BSP	3/4" BSP	1" BSP	1 1/4" BSP	1 1/2" BSP
TYPE	throttle check						
p max	400				320		
Q nom	15	30	50	80	150	200	220
Q free max	35	80	150	200	300	400	500



MODEL CODE **RPC1 RPC1-T3 RPC2 RPC2-T3 RPC3 RPC3-T3**

CATALOGUE	32 200	32 250	32 300	32 350	32 300	32 350
SIZE (ND)	6		10		16	
SIZE ISO 6263	03		06		07	
TYPE	2-way pressure and temperature compensated	3-way pressure and temperature compensated	2-way pressure and temperature compensated	3-way pressure and temperature compensated	2-way pressure and temperature compensated	3-way pressure and temperature compensated
p max	250		320		250	
Δp	10 bar	12 bar	10 bar		12 bar	
Q min contr.	0,025 l/min	0,035 l/min	0,05 l/min	0,06 l/min	0,12 l/min	0,13 l/min

CONTROLLED FLOW

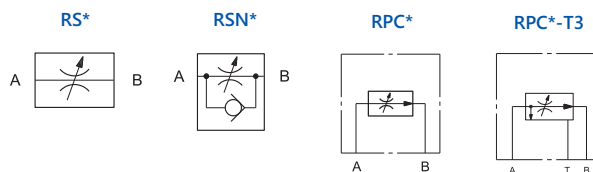
0.5	■					
1; 4; 10; 16	■	■				
22	■	■	■			
30	■					
38			■			
50				■		
70			■			
100					■	
150					■	■

FEATURES ++

RPC\*: **C** check valve - **X** check valve + anti jump P port (RPC1 only) - **M** single turn knob - **RC** compensating stroke governor (RPC2 and RPC3)

RPC\*-T3: **Q** pressure relief valve 10 ÷ 210 bar (RPC2-T3 and RPC3-T3) - **M** single turn knob

SYMBOLS





MODEL CODE	CR	PRK10	DBV	PCK06-P	PCK06-PT
CATALOGUE	<b>21 100</b>	<b>21 111</b>	<b>21 120</b>	<b>21 140</b>	<b>22 140</b>
seat type	D-10E	SAE-10	D-10E	D-10D	
port THREAD	ø20,6	7/8-14 UNF-2B	M30 x 1,5	ø20,6	
TYPE	direct	pilot	direct	NO compensator	NC compensator
p max	350	350	380	350	
Q max	50	120	120	40	

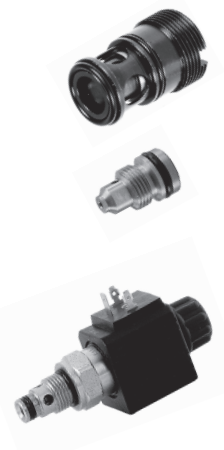
### ■ PRESSURE ADJ. RANGES

CR: **2** up to 25 bar - **3** up to 70 bar - **4** up to 140 bar - **5** up to 210 bar - **6** up to 350 bar  
 PRK10: **070** 6 ÷ 70 bar - **140** 6 ÷ 140 bar - **210** 6 ÷ 210 bar - **350** 6 ÷ 350 bar  
 DBV: **035** up to 35 bar - **050** up to 50 bar - **080** up to 80 bar - **100** up to 100 bar - **160** up to 160 bar  
**200** up to 200 bar - **250** up to 250 bar - **300** up to 300 bar  
 PCK06: **V** variable 7 ÷ 33 - **4** 4 bar - **8** 8 bar



MODEL CODE	RS*-I - throttle				
CATALOGUE	<b>31 200</b>				
*	2	3	4	5	6
port THREAD	M20x1,5	M20x1,5	M27x2	M33x2	M42x2
TYPE	throttle				
p max	320				
Q nom	15	30	50	80	150

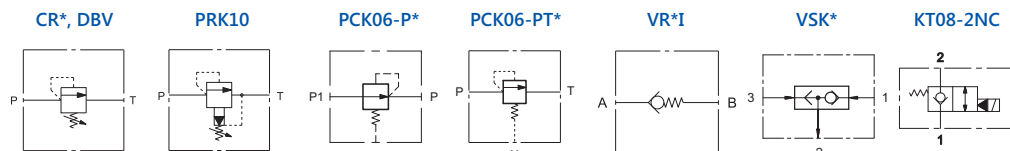
MODEL CODE	RSN*-I - throttle check			
CATALOGUE	<b>31 210</b>			
*	2	3	4	5
port THREAD	M20x1,5	M27x2	M33x2	M42x2
TYPE	throttle check			
p max	320			
Q nom	15	30	50	80
Q free max	35	80	150	200



MODEL CODE	VR2-I	VR5-I	VR7-I	VSK1	VSK2	KT08
CATALOGUE		<b>45 100</b>		<b>45 110</b>	<b>45 110</b>	<b>43 100</b>
port THREAD	1/4"	3/4"	1" 1/4	slip-in ø11,75 mm	M12x1	3/4-16 UNF
TYPE	check valve			shuttle	shuttle	solenoid, poppet
p max	320	250	250	350	350	350
Q max	50	150	300	20	3	50

### ■ FEATURES ++

VR\*-I CRACKING PRESSURE: **1** 0.5 bar - **3** 5 bar - **4** 10 bar  
 KT08: **NO** normally open - **NC** normally closed - ELECTRICAL OPTIONS same as DL3 valve, see at DIRECTIONAL VALVES.



# DIRECTIONAL VALVES

## SOLENOID - DIRECT OPERATED



MODEL CODE	DL2	DS3	DL3	DL3B	DS5	DL5	DL5B
CATALOGUE	41 100	41 150	41 211	41 220	41 310	41 330	41 335
SIZE	04	06		10			
ISO 4401 / CETOP	02	03		05			
TYPE	Standard	Standard	Compact version	8W Low consumption	Standard	Compact version	Compact version
p max	250 bar	350 bar	280 bar	280 bar	320 bar	320 bar	320 bar
Q max	20 l/min	100 l/min	50 l/min	60 l/min	150 l/min	125 l/min	125 l/min

### SPOOLS

S1; S2; S3; S4	■	■	■	■	■	■	■
S5; S6; S7; S8		■			■		
S9 to S29		■			■		
SA* ; SB*	■	■	■	■	■	■	■
RSA* ; RSB*		■					
TA ; TB	■	■	■	■	■	■	■
TA02 ; TB02		■	■	■	■	■	■
TA23 ; TB23		■	■		■	■	■
TA/TB 30; TA/TB 33		■					
RK		■	■	■	■		
RK1; RK02; 1RK		■			■		

### COIL TYPE

D12	■	■	■		■	■	■
D14		■					
D24	■	■	■	■	■	■	■
D28		■	■			■	■
D48		■	■				
D110; D125; D220		■			■		
A24; A48; A110; A230		■	■		■	■	
F110; F220		■			■		
R110; R220	■		■				

### COIL CONNECTIONS

K1	■	■	■	■	■	■	■
K2		■	■				■
K4			■				
K7		■	■		■		■
K7D (diode)		■	■				■
K8			■				

### MANUAL OVERRIDES

CM		■	■		■	■	■
CH		■	■				
CP		■					■
CK / CK1		■	■		■	■	■
CPK		■	■				■

### FEATURES ++

MONITORED **M** - see dedicated section at page 20

EXPLOSION PROOF **D\*K\*** - see catalogue 41 515

SOFT-SHIFT **F / S**

EXTERNAL DRAIN **Y** available for ISO 4401-05 sizes

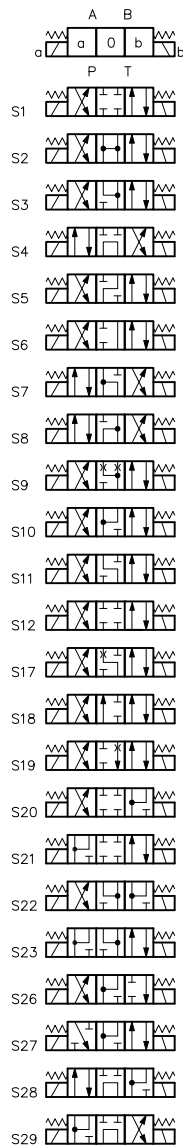
ALTERNATIVE SURFACE FINISHES: **W7** Zinc-Nickel (salt spray resistance up to 600 hours)

DS3 SPECIAL VERSIONS: **UL** certified coils - **R** fixing screws as 4WE6\*6X Rexroth



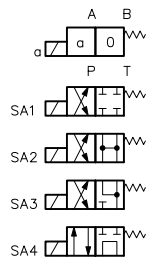
## S\*

2 solenoids  
3 positions  
spring offset



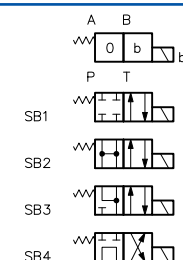
## SA\*

1 solenoid side A  
2 positions  
(middle + external)  
with spring offset



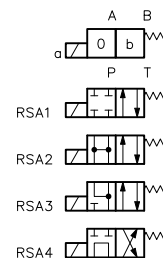
## SB\*

1 solenoid side B  
2 positions  
(middle + external)  
with spring offset



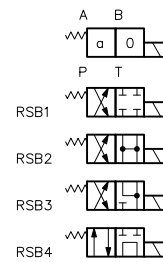
## RSA\*

1 solenoid side A  
2 positions  
(external + middle)  
with spring offset



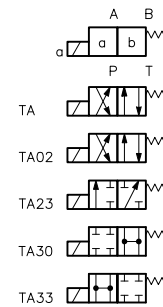
## RSB\*

1 solenoid side B  
2 positions  
(external + middle)  
with spring offset



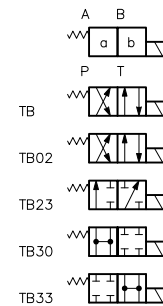
## TA\*

1 solenoid side A  
2 external positions  
with spring offset



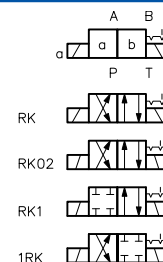
## TB\*

1 solenoid side B  
2 external positions  
with spring offset



## RK

2 solenoids  
2 positions  
with detent



# DIRECTIONAL VALVES

## SOLENOID - PILOT OPERATED



MODEL CODE	E4	DSP7	E5	DSP10
CATALOGUE	41 400	41 420	41 400	41 440
SIZE (ND)	10	16	25	32
CETOP	05, R05	07	08	10
ISO 4401	05	07	08	10
TYPE	solenoid	solenoid	solenoid	solenoid
p max	320 bar	350 bar	320 bar	350 bar
p max high pressure vers.	420 bar	420 bar	420 bar	-
Q max	150 l/min	300 l/min	600 l/min	1100 l/min

### SPOOLS

S1; S2; S3; S4	■	■	■	■
S5; S18	■		■	
S6 to S12	■	■	■	
S20; S21		■		
SA1; SB1	■	■	■	■
SA2/SB2 to SA4/SB4		■		■
TA ; TB;	■	■	■	■
TA02; TB02	■	■	■	■
TA23 ; TB23	■	■	■	
RK; RK02; RK002	■	■	■	■

### COIL TYPE

D12; D24	■	■	■	■
D48; D110; D220	■	■	■	■
A24; A48; A110; A230	■	■	■	■
F110; F220	■	■	■	■

### COIL CONNECTIONS

K1	■	■	■	■
K7 (D12 and D24 coil)	■	■	■	

### MANUAL OVERRIDE

CM	■	■	■	■
----	---	---	---	---

### VERSIONS

MONITORED **M** - see dedicated section at page 20

EXPLOSION PROOF **D\*K\*** - see catalogue 41 515

HYDRAULIC OPERATED VERSIONS **C** described in the valves datasheets

HIGH PRESSURE VERSION **H**

### FEATURES ++

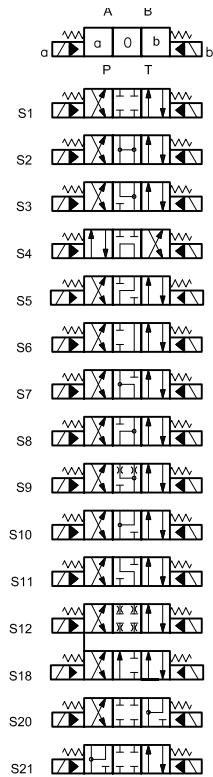
PILOT / DRAINAGE **I** internal - **Z** internal with pressure reducing - **C** internal with built-in backpressure valve  
**E** external (always verify application cases on valve datasheet)

OPTIONS: **C** stroke control - **D** shifting speed control - **G** stroke + shifting control - **P\***, **PF** restrictor subplate

ALTERNATIVE SURFACE FINISHES: **W7** Zinc-Nickel (salt spray resistance up to 600 hours)

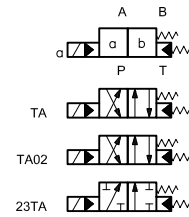
## S\*

2 solenoids  
3 positions  
spring offset



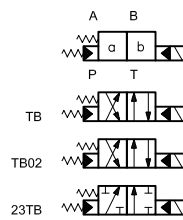
## TA\*

1 solenoid side A  
2 external positions  
with spring offset



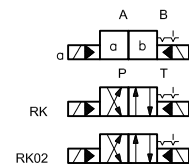
## TB\*

1 solenoid side B  
2 external positions  
with spring offset



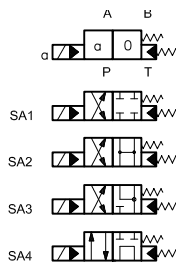
## RK

2 solenoids  
2 positions  
with detent



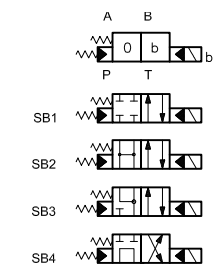
## SA\*

1 solenoid side A  
2 positions  
(middle + external)  
with spring offset



## SB\*

1 solenoid side B  
2 positions  
(middle + external)  
with spring offset





MODEL CODE	DSH3		DSH3L		DSR3L		DSA3		DSC3		DSH5		DSA5	
CATALOGUE	41 600		41 605		41 610		41 620		41 630		41 600		41 620	
SIZE (ND)											06		10	
CETOP											03		05	
ISO 4401											03		05	
TYPE	lever		lever compact		roller cam		air		hydraulic		lever		air	
p max											350 bar		320 bar	
Q nom	75 l/min		60 l/min		75 l/min		75 l/min		75 l/min		150 l/min		120 l/min	

#### SPOOLS

S1; S2; S3; S4	■	■			■	■	■	■			■	■	
S5 to S23							■						■
SA1; SA2; SA3; SA4	■						■	■			■		■
SB1; SB2; SB3; SB4							■	■					■
TA	■	■	■		■	■	■	■			■	■	■
TA02, TA23	■						■	■					■
TB							■	■					■
TB02, TB23							■	■					■
TAK	■	■									■		
TAK02, TAK23	■												
SK1; SK2; SK3; SK4	■	■									■		
SAK1; SAK2; SAK3; SAK4	■										■		
R					■								
RK							■	■					■
RK1, RK02; 1RK							■						■

#### FEATURES ++

DSR3 VERSIONS: **L** compact - **H** heavy duty - **R** two roller (DSR3L only)

DSH\* / DSH3L ALTERNATIVE SURFACE FINISHES: **W7** Zinc-Nickel (salt spray resistance up to 600 hours)

MODEL CODE	ECA	ECB1	ECB2	ECD	ECH
CATALOGUE	49 000				
TYPE	EN 175301-803:2006 form A (ex DIN 43650)				
version	2 poles + GND	2 poles + GND + LED (led ON = energized)		bridge rectifier	RC damping circuit
supply	AC/DC	AC/DC		AC	AC/DC
voltage	up to 230 V	10 to 50 V	70 to 250 V	up to 230 V	up to 230 V
coil type	AC or DC	AC or DC	AC or DC	DC fed w. AC	AC or DC

#### FEATURES ++

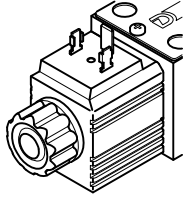
ECA COLOR : **B** black - **A** gray

MODEL CODE	ECL	ECF
CATALOGUE	49 300	49 310
TYPE	power saving device	rapid energizing
plug	EN 175301-803 connector	
power supply	8 to 30 V DC	24 to 30 V DC
max current	6A	

For 12 and 24V DC coils

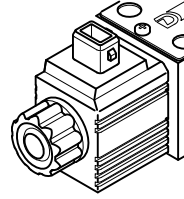
## K1

DIN 43650  
(standard)



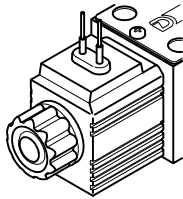
## K2

AMP Junior



## K4

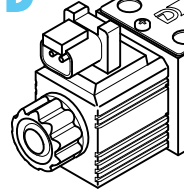
outgoing cables



## K7, K7D

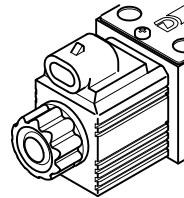
for male connector  
DEUTSCH DT06-2S

K7D with internal  
diode to avoid  
voltage peaks



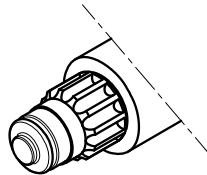
## K8

AMP Super Seal



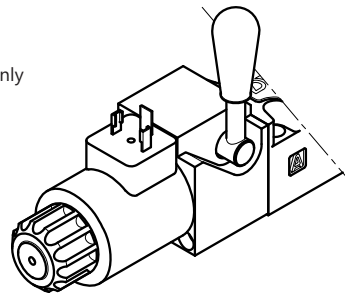
## CM

Boot



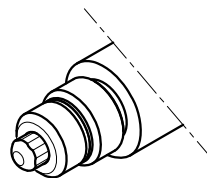
## CH

Lever  
DC valves only



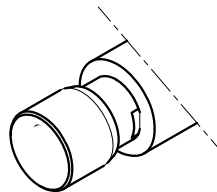
## CP

Push  
DC valves only



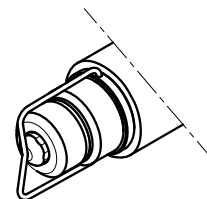
## CK1

Knob,  
DC valves only

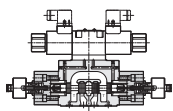
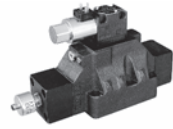
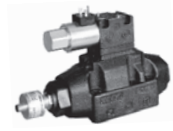
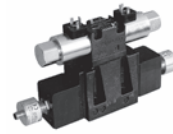


## CPK

Push with detent  
DC valves only



# DIRECTIONAL VALVES SOLENOID-MONITORED



MODEL CODE	DS3M	DS5M	DSP5M DSP5RM	DSP7M	DSP8M	DSP10M
CATALOGUE	41 505					
SIZE	6	10		16	25	32
CETOP	03	05	P05, R05	07	08	10
ISO 4401	03	05	05	07	08	10
TYPE	direct op.	direct op.	pilot op.	pilot op.	pilot op.	pilot op.
p max	350 bar	320 bar		350 bar	350 bar	350 bar
Q max	80 l/min	120 l/min	150 l/min	300 l/min	600 l/min	1100 l/min

## FEATURES ++

The compliance of these valves with the CE safety requirements has been verified by TÜV Sud.

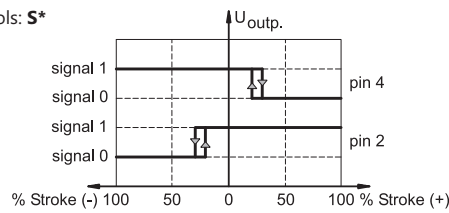
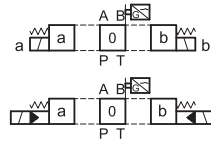
COIL TYPE: **D12** 12V DC - **D24** 24V DC - **D110** 110V DC - **D220** 220V DC

**K1** DIN 43650 connection



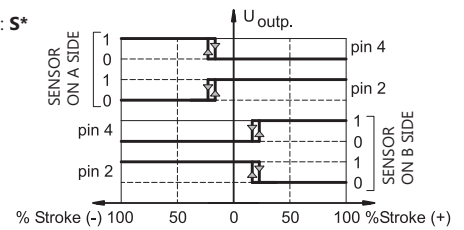
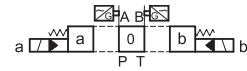
## RO

1 sensor  
middle  
position  
monitored  
spools: **S\***



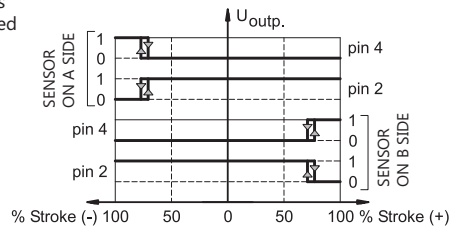
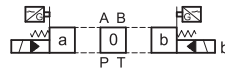
## MO

2 sensors  
middle  
position  
monitored  
spools: **S\***

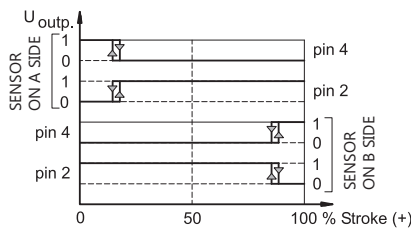
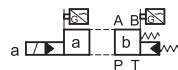


## MAB

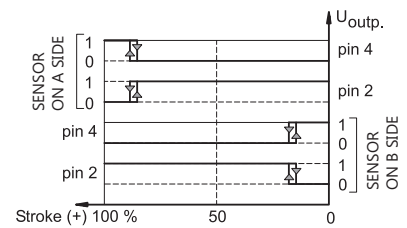
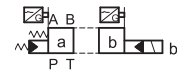
2 sensors  
2 external  
positions  
monitored  
spools:  
**S\***



2 positions  
monitored  
spools:  
**SA\*, TA\***



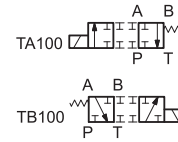
2 positions  
monitored  
spools: **SB\*, TB\***



### AVAILABLE SPOOLS/MONITORED POSITIONS

	S*	SA* SB*	TA TA100	TA02	TB TB100	TB02	RK
<b>DS3M</b>							
<b>R0</b>	■						
<b>MA</b>		■	■	■	■		
<b>MB</b>		■	■	■	■		
<b>DS5M</b>							
<b>R0</b>	■						
<b>MA</b>		■	■	■	■	■	
<b>MB</b>		■	■	■	■	■	
<b>DSP*M</b>							
<b>R0</b>	■						
<b>MA</b>		■	■		■		■
<b>MB</b>		■	■		■		■
<b>M0</b>	■						
<b>MAB</b>	■	■	■		■		

### SPECIALS

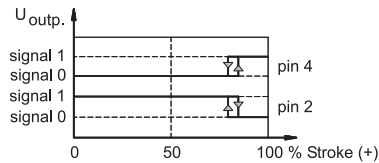
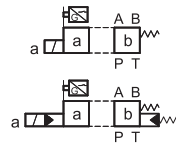


Refer to the 'solenoid operated' section for standard spools, and to the datasheet n° 41505 for the full range of available spools.

## MA

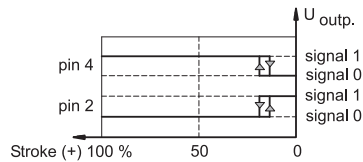
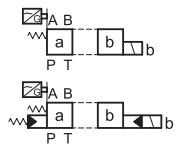
1 sensor  
spools:  
**SA\*, TA\***

actuated position monitored

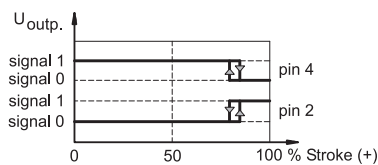
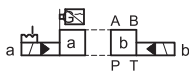


spools:  
**SB\*, TB\***

initial position monitored



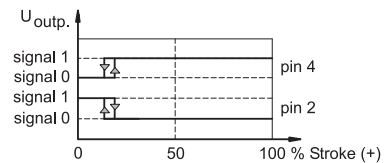
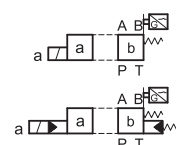
spools: **RK**  
'A' position monitored



## MB

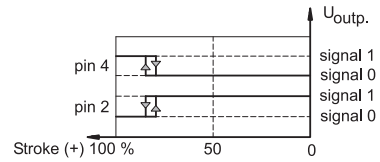
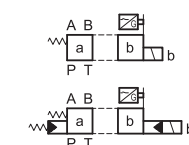
1 sensor  
spools:  
**SA\*, TA\***

initial position monitored

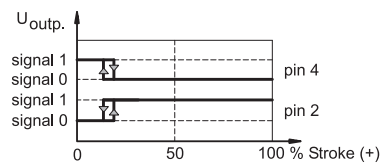
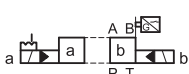


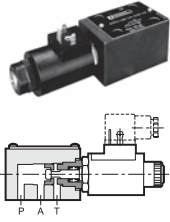
spools:  
**SB\*, TB\***

actuated position monitored



spools: **RK**  
'B' position monitored





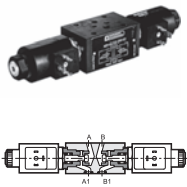
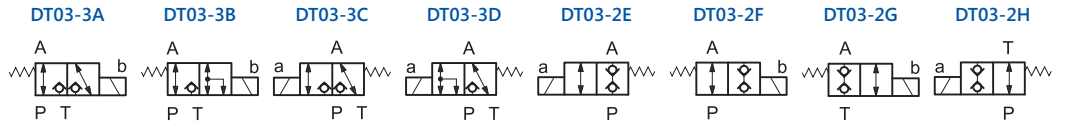
MODEL CODE **DT03-3A DT03-3B DT03-3C DT03-3D DT03-2E DT03-2F DT03-2G DT03-2H**

CATALOGUE	<b>42 200</b>							
Size (ISO)	4401-03							
TYPE	subplate mounting, 3-way solenoid operated				subplate mounting, 2-way solenoid operated			
p max	250 bar							
Q max	12 l/min	25 l/min	25 l/min	25 l/min	25 l/min	12 l/min	25 l/min	25 l/min

**FEATURES ++**

SUPPLY VOLTAGES: direct current **12V-CC** 12 V - **24V-CC** 24 V; alternating current **24RAC** 24 V - **110RAC** 110V - **220RAC** 220 V  
 RESTRICTORS PLUG ON P LINE: **D08** orifice Ø0.8 - **D10** orifice Ø1

**SYMBOLS**



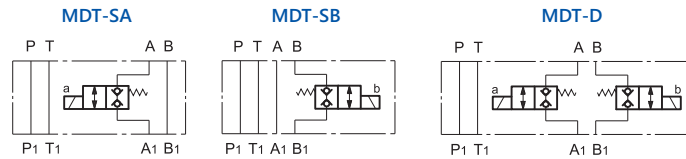
MODEL CODE **MDT-SA MDT-SB MDT-D**

CATALOGUE	<b>42 250</b>		
Size (ISO)	4401-03		
TYPE	modular version		
p max	250 bar		
Q max	25 l/min	25 l/min	25 l/min

**FEATURES ++**

SUPPLY VOLTAGES: direct current **12V-CC** 12 V - **24V-CC** 24 V; alternating current **110RAC** 110V - **220RAC** 220 V

**SYMBOLS**







MODEL CODE

**VD\*-W**

CATALOGUE

**45 200**

*	2	3	4	5	6	7	8	9
port THREAD	1/4" BSP	3/8" BSP	1/2" BSP	3/4" BSP	1" BSP	1 1/4" BSP	1 1/2" BSP	2" BSP
TYPE	check							
p max	400 bar				320 bar			
Q nom	25 l/min	40 l/min	75 l/min	125 l/min	200 l/min	280 l/min	650 l/min	850 l/min

■ **FEATURES ++**

CRACKING PRESSURE: **1** 0.35 bar - **2** 2bar - **T4** 4 bar - **3** 6 bar - **4** 10 bar



MODEL CODE

**VR3-P**

**VR5-P**

**VR7-P**

**VP3-P\*-MU**

**VP5-P\*-MU**

CATALOGUE

**45 300**

**46 300**

port dimensions	3/8" BSP	3/4" BSP	1" 1/4 BSP	ISO 5781-06	ISO 5781-08
TYPE	check			p.o. check	
p max	350 bar	350 bar	250 bar	320 bar	320 bar
Q max	100 l/min	200 l/min	400 l/min	50 l/min	100 l/min

■ **VR\*P FEATURES ++**

CRACKING PRESSURE : **1** 0.5 bar - **3** 5 bar - **4** 10 bar

■ **VP\*-P\*-MU FEATURES ++**

CRACKING PRESSURE: **2** 3.5 bar - **3** 5 bar

OPTION: **P** decompression device



MODEL CODE

**CFP-S\***

CATALOGUE

**46 400**



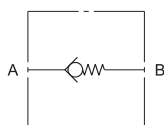
*	032	040	050	063	080	100	125
Size (ND)	32	40	50	63	80	100	125
TYPE	filling valves						
p max	350 bar						
Q max	160 l/min	250 l/min	400 l/min	600 l/min	1000 l/min	1600 l/min	2500 l/min

■ **FEATURES ++**

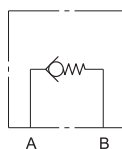
OPTION: **0** without pre-opening - **1** with pre-opening (not available for ND 125)

■ **SYMBOLS**

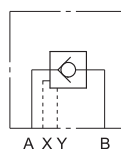
**VD\*-W**



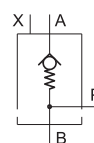
**VR\*-P**

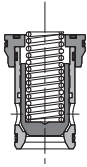


**VP\*-P\*-MU**



**CFP-S\***





MODEL CODE

**LC\***

CATALOGUE

**48 900**

SIZE (ND)	16	25	32	40	50	63
TYPE	ISO 7368 slip-in cartridge valves					
p max	420					
Q max QS	250 l/min	500 l/min	900 l/min	1300 l/min	2000 l/min	3000 l/min
Q max QD	200 l/min	450 l/min	800 l/min	1100 l/min	1700 l/min	2700 l/min
Q max PS	200 l/min	400 l/min	900 l/min	1000 l/min	1500 l/min	2500 l/min

TYPE

QS0.5	■	■	■	■	■	
QS2	■	■	■	■	■	■
QD4	■	■	■	■	■	
PS1						■
PS2	■	■	■	■	■	

### VERSIONS

**QS** flow control (1:1,66) - **QD** flow control with damping nose (1:1,66) - **PS** pressure control (1:1)

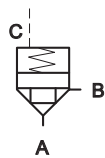
### FEATURES ++

CRACKING PRESSURE: **0.5** 0,5 bar - **1** 1 bar (ND 63 only) - **2** 2 bar - **4** 4 bar

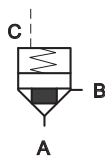
OPTIONS: **LL** low leakage (not available for QS 0.5 and LC16-PS\*)

### SYMBOLS

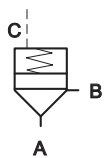
LC\*QS



LC\*QD



LC\*PS



MODEL CODE

**LCM\***

CATALOGUE

**48 900**

SIZE (ND)	16	25	32	40	50
TYPE	ISO 7368 slip-in cartridge valves				
p max	350				
Q max QS	250 l/min	500 l/min	900 l/min	1300 l/min	2000 l/min

### FEATURES ++

The compliance of these valves with the CE safety requirements has been verified by TÜV Sud.

CRACKING PRESSURE: 4 bar

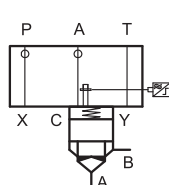
MONITORING: PNP type NO, closed position monitored, 24V DC

COVER FUNCTION: **D** check valve - **Z** piloting of other cartridges

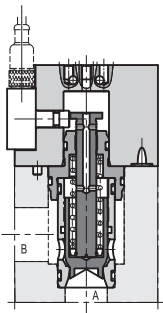
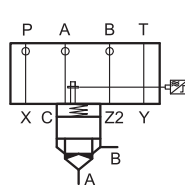
OPTIONS: **LL** low leakage

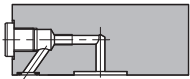
### SYMBOLS

LCM\*D



LCM\*Z





MODEL CODE	LP*					
CATALOGUE	48 900					
SIZE (ND)	16	25	32	40	50	63
TYPE	covers					
<b>TYPE</b>						
R	■	■	■			■
D	■	■	■	■	■	■
DZ	■	■	■	■		
DF1	■	■	■	■	■	
DF2	■	■	■	■		
Q	■	■	■	■	■	■
DP4	■	■	■	■	■	■
DP6	■	■	■	■	■	■
DPE4	■	■	■	■	■	
DPE6	■	■	■	■	■	

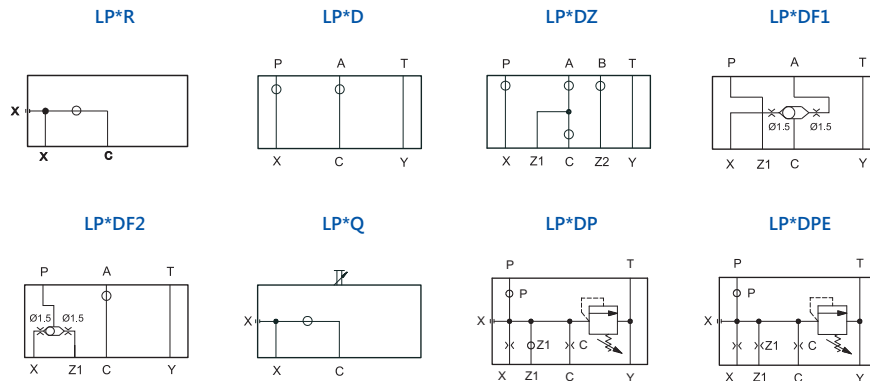
### FUNCTIONS

**R** directional control and check valve with external pilot x - **D** directional control and check valve

**DZ** directional control with possibility to pilot other cartridges in line - **DF1** directional control and check with double pilot line - **DF2** directional control and check with priority piloting from two external lines

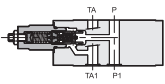
**Q** flow control - **DP4** pressure control with a built-in relief valve set 140 bar - **DP6** pressure control with a built-in relief valve set 350 bar - **DPE4** pressure control by means of proportional valve set 140 bar - **DPE6** pressure control by means of proportional valve set 350 bar

### SYMBOLS



### ■ STACK VALVES OVERVIEW

All modular valves with screw adjustment may be provided with **ADJUSTMENT KNOB**, with the exception of the valves size ISO 4401-02. Some valves may be provided with alternative surface finishes. Contact our sales dept. for more detailed information.



MODEL CODE	PRM2	MCD	MRQ	PRM5	PRM7	PBM3
CATALOGUE	<b>61 100</b>	<b>61 200</b>	<b>61 220</b>	<b>61 310</b>	<b>61 410</b>	<b>61 260</b>
SIZE	4	6	6	10	16	6
ISO 4401 / CETOP	02	03	03	05	07	03
TYPE	relief, direct operated		relief, pilot operated			backpressure
p max	320 bar	350 bar	350 bar	350 bar	350 bar	350 bar
Q max	20 l/min	50 l/min	75 l/min	120 l/min	300 l/min	50 l/min
Q max free lines		75 l/min				75 l/min

#### VERSIONS

PT; SP (P → T)	■	■	■	■	■	
SAT (A → T)		■	■	■		
BT; SBT (B → T)	■	■	■	■		
DT (A and B → T)	■	■	■	■		
SB (B → A)		■	■			
D, cross (A→B and B → A)		■	■	■		
B→B1						■

#### ■ PRESSURE ADJ. RANGES

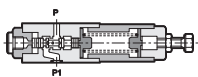
PRM2 : **4** 63 ÷ 125 bar - **5** 80 ÷ 210 bar - **6** 125 ÷ 320 bar

MCD, MRQ: **2** up to 25 bar - **3** up to 70 bar - **4** up to 140 bar - **5** up to 210 bar - **6** up to 350 bar

PRM5: **070** 6 ÷ 70 bar - **140** 6 ÷ 140 bar - **210** 6 ÷ 210 bar - **350** 6 ÷ 350 bar

PRM7: **4** 15 ÷ 160 bar - **5** 15 ÷ 250 bar - **6** 15 ÷ 315 bar

PBM3: **2** up to 25 bar - **3** up to 70 bar - **4** up to 140 bar



MODEL CODE	PZM2	MZD	Z4M	PZM7	MSD	SD4M
CATALOGUE	<b>62 100</b>	<b>62 200</b>	<b>62 300</b>	<b>62 410</b>	<b>63 200</b>	<b>63 300</b>
SIZE	4	6	10	16	6	10
ISO 4401 / CETOP	02	03	05	07	03	05, R05
TYPE	reducer				sequence	
p max	320 bar	350 bar	320 bar	350 bar	350 bar	320 bar
Q max	20 l/min	50 l/min	80 l/min	250 l/min	50 l/min	80 l/min
Q max free lines	30 l/min	75 l/min	100 l/min		75 l/min	100 l/min

#### VERSIONS

I; P (reduction in P)	■	■	■	■	■	■
A (reduction in A)		■	■	■		
B (reduction in B)		■	■			

#### ■ PRESSURE ADJ. RANGES

PZM2: **2** 4 ÷ 32 bar - **3** 5 ÷ 80 bar - **4** 10 ÷ 200 bar - **5** 25 ÷ 250 bar

MZD, variable **2** 3 ÷ 35 bar - **3** 10 ÷ 70 bar - **4** 30 ÷ 140 bar - **5** 50 ÷ 280 bar . MZD, fixed: **20, 25** and **30** bar

Z4M: **3** 5 ÷ 70 bar - **4** 8 ÷ 140 bar - **5** 10 ÷ 210 bar - **6** 15 ÷ 320 bar

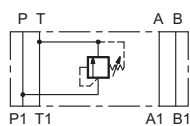
PZM7: Z4M: **3** 15 ÷ 100 bar - **5** 15 ÷ 250 bar

MSD: **3** 10 ÷ 70 bar - **4** 30 ÷ 140 bar - **5** 50 ÷ 280 bar

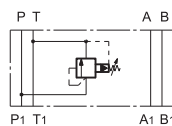
SD4M: **3** up to 70 bar - **4** up to 140 bar - **5** up to 210 bar

#### ■ SYMBOLS

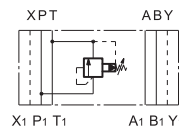
PRM2-PT, MCD-SP



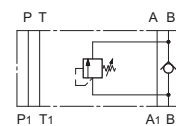
MRQ-SP



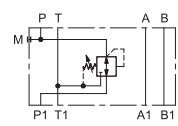
PRM7-PT

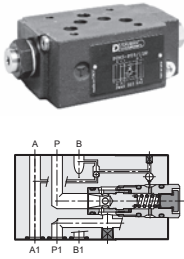


PBM3



MZD

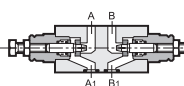




MODEL CODE	PCM3-P	PCM3-PT	PCM5-P	PCM5-PT	PCM8-P	PCM8-PT
CATALOGUE	63 310		63 320		63 520	
SIZE	6		10		25	
ISO 4401 / CETOP	03		05		08	
TYPE	2-way compensator	3-way compensator	2-way compensator	3-way compensator	2-way compensator	3-way compensator
p max	350 bar		320 bar		350 bar	
Q max	40 l/min		100 l/min	110 l/min	300 l/min	

### ■ PRESSURE ADJ. RANGES

V variable 7 to 33 bar (PCM3 only) - 4 4 bar - 5 5 bar



MODEL CODE	QTM2	MERS	QTM5	QTM7
CATALOGUE	64 100	64 200	64 310	64 410
SIZE	4	6	10	16
ISO 4401 / CETOP	02	03	05	07
TYPE	flow restrictor			
p max	320 bar	350 bar	350 bar	350 bar
p cracking	0,4 bar	0,5 bar	0,5 bar	0,7 bar
Q max	30 l/min	50 l/min	120 l/min	250 l/min

### METER OUT

SA (on line A)	■	■	■	■
SB (on line B)	■	■	■	
D (on line A and B)	■	■	■	■

### METER IN

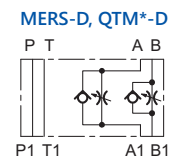
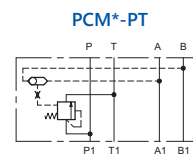
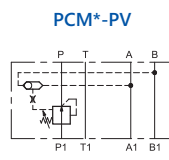
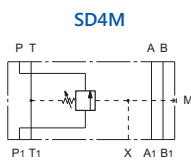
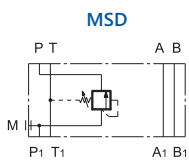
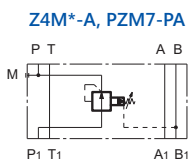
RSA (on line A)		■ (G)	■	
RSB (on line B)		■ (G)	■	
RD (on line A and B)		■	■	

### ■ MERS FEATURES ++

G\* VERSION: the valve body does not provide the OR seats.

The mounting interface is achieved by interposition of an OR subplate, included. The flow control (meter-in or meter-out) depends on the way of assembly the valve on the subplate.

The G version is available with SA, SB and D configurations.



# STACK VALVES

## CHECK VALVES

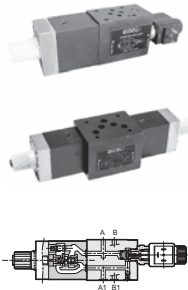
## FLOW CONTROL



MODEL CODE	CHM2	MVR	MVR-RS/P	MVPP	VR4M	CHM5	CHM7
CATALOGUE	65 100	65 200	65 210	65 250	65 300	65 360	65 410
SIZE	4	6		10		16	
ISO 4401 / CETOP	02	03		05		07	
TYPE	pilot operated	check valve	w. restrictor	pilot operated	check valve,	pilot operated	pilot operated
p max	320 bar	350 bar		320 bar		320 bar	350 bar
p cracking	2 bar	0,5; 3; 5 bar	1 bar	3 bar	0,5; 8 bar	2 bar	2 bar
Q max	30 l/min	50 l/min		100 l/min	120 l/min	300 l/min	
Q max free lines		75 l/min					

### CHECK VALVE

SP, P (on line P)		■	■		■		
SA (on line A)	■	■		■		■	■
SB (on line B)	■	■		■		■	■
ST (on line T)		■			■		
D (on line A and B)	■	■		■		■	■
PT, SPT (on line P and T)		■					



MODEL CODE	RPC1*M	RPC1*4M	RLM3
CATALOGUE	66 200	66 300	66 260
SIZE	6	10	6
ISO 4401 / CETOP	03	05	03
TYPE	adjustment compensated in flow and temperature		solenoid speed control
p max	250 bar	250 bar	250 bar
Q max free lines	65 l/min	120 l/min	65 l/min
Q reverse free	40 l/min	40 l/min	-

### METER OUT

A (on line A)	■	■	■
B (on line B)	■	■	
D (on line A and B)	■	■	
T (on line T)	■		■

### METER IN

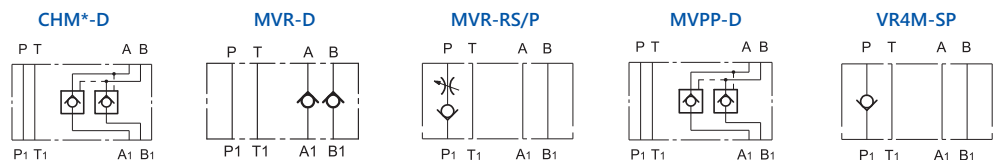
P (on line P)	■		
PCT3 (on line P w. adj on T)	■		

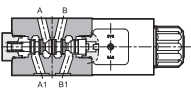
### FEATURES ++

FLOW ADJUSTMENT RANGE: **K** body only (without flow control valve). **1** 1 l/min - **4** 4l/min - **10** 10 l/min - **16** 16 l/min  
**22** 22 l/min - **30** 30 l/min

RLM3 ONLY: for **A** normally open - **C** normally closed solenoid valve.  
 ELECTRICAL OPTIONS same as DL3 valve, see at DIRECTIONAL VALVES.

### SYMBOLS





MODEL CODE	MDS3	MDS5	KTM3	MDF3	MDT
CATALOGUE	41 251	41 351	43 100	41 270	42 250
SIZE	6	10	6		
ISO 4401 / CETOP	03	05	03		
TYPE	directional		NC and NA, poppet	shut-off	poppet directional
p max	350 bar		350 bar	350 bar	250 bar
Q max	50 l/min	100 l/min	40 l/min	50 l/min	25 l/min

### MDS3 ++

AVAILABLE SPOOLS: **S1, S12, SA1, SA12, SB1, SB12, S3, RSA1, RSB1, TA, TB, TA31, TB31**. See spools schemes at DIRECTIONAL VALVES.

POWER SUPPLY: **DC** 12V, 24V, 28V, 48V, 110V, 220V; **AC** 24V, 48V, 110V, 220V

COIL CONNECTION: **K1** DIN 43650 - **K7** Deutsch (D12 and D24 only)

MANUAL OVERRIDES: **CM** boot - **CP** push - **CPK** push w. detent

### MDS5 ++

AVAILABLE SPOOLS: **S1, SA1, SB1, TA, TB**. See spools schemes at DIRECTIONAL VALVES.

POWER SUPPLY: **DC** 12V, 24V; **AC** 24V, 48V, 110V, 230V

COIL CONNECTION: **K1** DIN 43650

MANUAL OVERRIDES: **CM** boot - **CK1** knob

### KTM3 ++

**NO** normally open - **NC** normally closed

VERSIONS: **P** delivery interception on P line - **PT** interception on P-T lines

**D** outgoing interception on A and B lines - **RD** incoming interception on A and B lines - **SB** outgoing interception on B line

OPTIONS: **CM** boot

ELECTRICAL OPTIONS same as DL3 valve, see at DIRECTIONAL VALVES.

### MDF3 ++

**A** initial position open - **C** initial position closed

POWER SUPPLY: **DC** 12V, 24V, 48V, 110V, 220V - DIN 43650 connections.

### MDT ++

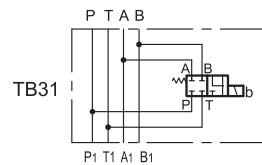
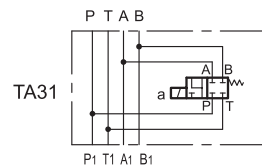
**A** initial position open - **C** initial position closed

VERSIONS: **SA** control on line A - **SB** control on line B - **D** control on lines A and B

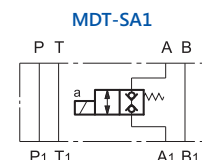
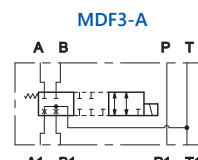
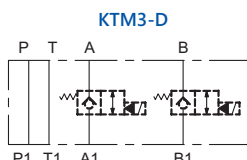
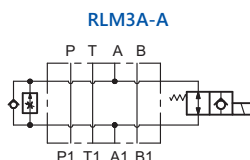
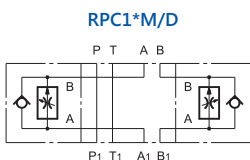
SUPPLY VOLTAGES: direct current **12V-CC** 12 V - **24V-CC** 24 V; alternating current

**110RAC** 110V - **220RAC** 220 V - DIN 43650 connections.

### MDS3 SPECIALS



Please refer to the 'solenoid operated' section for standard spools.



# PROPORTIONAL VALVES PRESSURE CONTROL



MODEL CODE	CRE	PRED3	PRED3G	PRED3J	PRE3	PRE3G
CATALOGUE	<b>81 100</b>	<b>81 210</b>	<b>81 220</b>	<b>81 230</b>	<b>81 240</b>	<b>81 250</b>
SIZE (ND)	cartridge	06				
SIZE ISO / CETOP	-	4401-03				
TYPE	relief, direct op.	relief direct operated	relief direct operated with OBE	relief with OBE and pressure feedback	relief pilot operated	relief pilot operated with OBE
p max	350 bar	350 bar			350 bar	
Q max	1,5 l/min	3 l/min			40 l/min	

### PERFORMANCES

hysteresis	< 5%	< 5%	< 3%	< 1%	< 5%	< 3%
resp. time 0 → 100%	80 ms	80 ms	60 ms	60 ms	80 ms	100 ms
resp. time 100 → 0%	40 ms	40 ms	40 ms	40 ms	40 ms	35 ms

### PRESSURE ADJ. RANGE

up to 70 bar	■	■	■		■	■
up to 140 bar	■	■	■	■	■	■
up to 210 bar		■	■	■	■	■
up to 250 bar	■					
up to 350 bar		■	■	■	■	■

MODEL CODE	PRE10	PRE10G	PRE10J	PRE25	PRE25G	PRE25J	PRE32	PRE32G	PRE32J
CATALOGUE	<b>81 310</b>	<b>81 320</b>	<b>81 330</b>	<b>81 310</b>	<b>81 320</b>	<b>81 330</b>	<b>81 310</b>	<b>81 320</b>	<b>81 330</b>
SIZE (ND)	10			25			32		
SIZE ISO	6264-06			6264-08			6264-10		
TYPE	relief	relief with OBE	relief with OBE and press. feedback	relief	relief with OBE	relief with OBE and press. feedback	relief	relief with OBE	relief with OBE and press. feedback
p max	350 bar								
Q max	200 l/min			400 l/min			500 l/min		

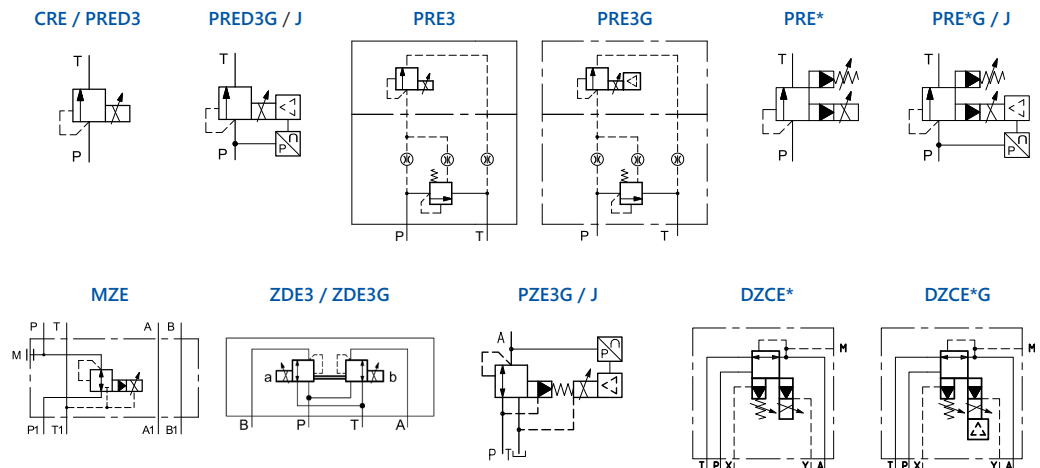
### PERFORMANCES

hysteresis	< 5%	< 3%	< 1%	< 5%	< 3%	< 1%	< 5%	< 3%	< 1%
resp. time 0 → 100%	60 ms			60 ms			60 ms		
resp. time 100 → 0%	40 ms			40 ms			40 ms		

■ **PRE\*(D)\*K\*** ex-proof versions of PRED3, PRE3, PRE\* available, cat. 81315

PRESSURE ADJ. RANGE: **070** up to 70 bar - **140** up to 140 bar - **210** up to 210 bar - **350** up to 350 bar

### SYMBOLS







MODEL CODE	MZE	PZE3	PZE3G	PZE3J	ZDE3	ZDE3G
CATALOGUE	81 500	81 501	81 502	81 503	81 510	81 520
SIZE (ND)	06	06		06		
SIZE ISO	4401-03	4401-03		4401-03		
TYPE	reducing	three-port pressure reducing, pilot operated			reducing, direct operated	
	modular, pilot op.		with OBE	with OBE and pressure feedback		with OBE
p max	320 bar	350 bar			100 bar	
Q max	30 l/min	50 l/min			15 l/min	

#### PERFORMANCES

hysteresis	< 3%	< 5%	< 3%	< 1%	< 4%	< 3%
resp. time 0 → 100%	100 ms	90 ms	90 ms	90 ms	30 ms	20 ms
resp. time 100 → 0%	80 ms	90 ms	90 ms	40 ms	30 ms	20 ms

#### ■ MZE

PRESSURE ADJ. RANGE: **3** 7 ÷ 70 bar - **4** 7.5 ÷ 150 bar - **5** 8 ÷ 230 bar

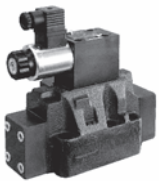
#### ■ PZE3, PZE3G, PZE3J

PRESSURE ADJ. RANGE: **025** 0 ÷ 25 bar - **070** 0 ÷ 70 bar - **140** 0 ÷ 140 bar - **210** 0 ÷ 210 bar - **310** 0 ÷ 310 bar

#### ■ ZDE3, ZDE3G

VERSIONS: **ZDE3K\*** ex-proof version available, cat. 81515 - **D** pressure reduction in A and B - **SA** pressure reduction in A (solenoid on side B) no ZDE3G - **SB** pressure reduction in B (solenoid on side A)

EXTRA COIL CONNECTION: **K7** Deutsch (no ZDE3G) OPTIONS: **CM** boot manual override - **CS** screw manual override



MODEL CODE	DZCE5	DZCE5G	DZCE7	DZCE7G	DZCE8	DZCE8G
CATALOGUE	81 600	81 610	81 600	81 610	81 600	81 610
SIZE (ND)	10		16		20	
SIZE ISO	4401-05, R05, P05		4401-07		4401-08	
TYPE	three-port pressure reducing / relieving valve					
p max	350 bar					
Q max	150 l/min		300 l/min		500 l/min	

#### PERFORMANCES

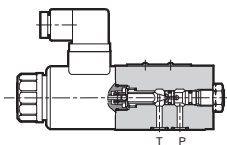
hysteresis	< 4%	< 2%	< 4%	< 2%	< 4%	< 2%
resp. time 0 → 100%	100 ms	100 ms	100 ms	100 ms	100 ms	100 ms
resp. time 100 → 0%	50 ms	50 ms	50 ms	50 ms	50 ms	50 ms

■ **DZCE\*K\*** ex-proof versions available, cat. 81605

PRESSURE ADJ. RANGE: **070** 1 ÷ 70 bar - **140** 1 ÷ 140 bar - **210** 1 ÷ 210 bar - **300** 1 ÷ 300 bar

OPTIONS: **I** internal pilot / drain - **E** external pilot / drain

## E

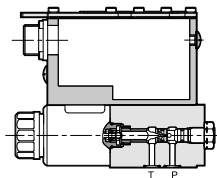


#### ■ PROPORTIONAL CONTROL

COIL CONNECTION: **K1** DIN 43650 style

POWER SUPPLY: **D12** 12V DC - **D24** 24V DC.

## G

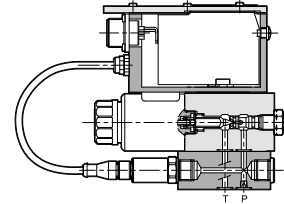


#### ■ ON-BOARD ELECTRONICS

main connection 24V DC, 6 pin +PE

REF. SIGNAL: **E0** voltage, 0 - 10V  
**E1** current, 4 - 20 mA  
 PIN C: **A** external enable  
**B** internal enable  
**C** 0V monitor

## J



#### ■ OBE + PRESSURE TRANSDUCER

main connection 24V DC, 6 pin +PE

REF. SIGNAL: **E0** voltage, 0 - 10V  
**E1** current, 4 - 20 mA  
 PIN C: **A** external enable  
**B** internal enable  
**C** 0V monitor



MODEL CODE	RPCED1	RPCER1	RPCED1-T3	QDE3	QDE5
CATALOGUE	82 200	82 250	82 210	82 220	82 220
SIZE (ND)	6			6	10
SIZE ISO / CETOP	6263-03			6263-03	4401-05
TYPE	2-port compensated	2-port compensated + LVDT	3-port compensated	2 or 3-port compensated	2 or 3-port compensated
p max	250 bar				
$\Delta p$	10 bar		8 bar	4 and 8 bar	8
Q min controlled	0,025 l/min		0,5 l/min	0,4 l/min	2 l/min

### PERFORMANCES

hysteresis	< 6 %	< 2,5 %	< 6 %	< 6 %	< 6 %
response time 0 → 100 %	60 ms	180 ms	60 ms	70 ms	
response time 100 → 0 %	80 ms	150 ms	80 ms	-	-

### CONTROLLED FLOW

1,5 ; 4 ; 8	■	■	■		
14				■	
16	■	■	■		
20				■	
25	■	■	■		
30				■	
40				■	
80					■

### FEATURES ++

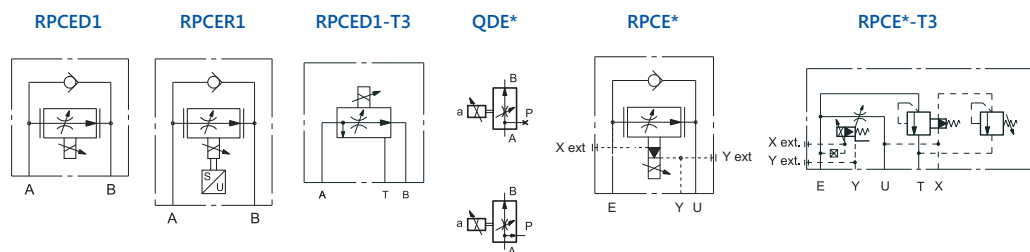
QDE\* are suitable both as restrictive or as bypass flow control, depending on the ports realized on the mounting surface.

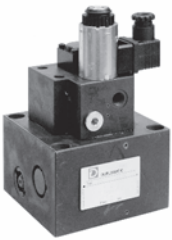
COILS: power supply **D12** 12V DC - **D24** 24V DC

OPTIONS: **CM** boot manual override (QDE3 only)- **CS** screw manual override (QDE3 only)- **CK1** knob

**W7** Zinc-nickel (salt spray resistance up to 600 hours) (QDE\* only)

### SYMBOLS





MODEL CODE	RPCE2	RPCE2-T3	RPCE3	RPCE3-T3
CATALOGUE	82 300		82 450	
SIZE ISO / CETOP	6263-06		6263-07	
TYPE	2-port compensated	3-port compensated	2-port compensated	3-port compensated
p max	250 bar		250 bar	
$\Delta p$	10 bar		10 bar	
Q min contr.	0,2 lt/min	0,5 l/min	0,5 l/min	1,5 l/min

#### PERFORMANCES

hysteresis	< 8 %			
response time 0 → 100 %	250 ms		250 ms	
response time 100 → 0 %	120 ms		120 ms	

#### CONTROLLED FLOW

35 (G only)	■			
37	■			
72	■			
80		■		
100			■ (G)	■

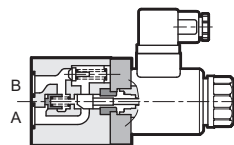
#### FEATURES ++

**G** differential gain. Available only in RPCE2 at 35 l/min and in RPCE3 at 100 l/min.

RPCE\*: **E** external pilot

RPCE\*-T3: **E** external pilot - **M** unloading device

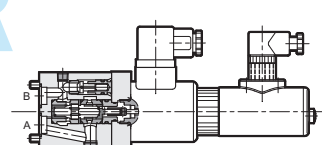
## E



#### PROPORTIONAL CONTROL

COIL CONNECTION: DIN 43650 style  
POWER SUPPLY: **D24** 24V DC

## R

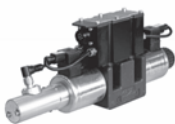
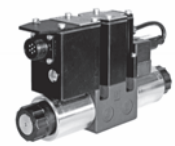
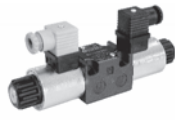


#### POSITION TRANSDUCER

COIL CONNECTION: **K1** DIN 43650 style  
LVDT CONNECTION: 4 pin M12 PG7  
supply: 18 - 36 V DC  
output: 2 - 10 V

# PROPORTIONAL VALVES

## DIRECTIONAL CONTROL



MODEL CODE	DSE3B	DSE3	DSE3G	DSE5	DSE5G	DSE3F	DSE3J	DSE5J
CATALOGUE	83 215	83 210	83 220	83 260	83 270	83 240	83 230	83 280
SIZE (ND)	06		10		06		10	
CETOP	03		05, R05		03		05	
ISO 4401	03		05		03		05	
TYPE	direct operated - open loop				direct operated - closed loop			
	compact version	standard	with OBE	standard	with OBE	with LVDT	with LVDT + OBE	with LVDT + OBE
p max	350 bar		320 bar		350 bar		320 bar	
Q max	40 l/min		90 l/min		40 l/min		180 l/min	

### PERFORMANCES

hysteresis	< 6 %	< 6 %	< 3 %	< 6 %	< 3 %	< 1,5 %	< 0,2 %	
response time 0 → 100 %	50 ms	50 ms	25 ms	50 ms	50 ms	30 ms	20 ms	40 ms
response time 100 → 0 %	40 ms	40 ms	20 ms	40 ms	30 ms	25 ms	20 ms	30 ms
frequency resp. (± 10%) magnitude at -3dB	-	-	-	-	-	-	40 Hz	35 Hz
phase lag at 90°	-	-	-	-	-	-	50 Hz	35 Hz

### NOMINAL FLOW (Δp 10 bar)

01R		■	■				■	
4		■	■				■	
8	■	■	■			■		
12							■	
16	■	■	■			■		
16/08		■	■					
26	■	■	■			■		
26/13		■	■					
30				■	■		■	
30/15							■	
50								■
60				■	■			
60/30				■	■			
75								■
70/35								■

### COIL TYPE

D12	■	■		■		■		
D14	■	■		■				

### CONNECTIONS

K1	■	■		■		■		
K7	■	■						
K11			■		■		■	■

### MANUAL OVERRIDES

CM	■	■	■					
CS		■	■					
CH		■						
CK1	■	■		■				

### FEATURES ++

EXPLOSION PROOF **DS(P)E\*K\*** see datasheet 83 510

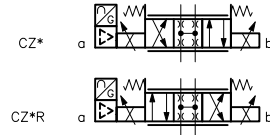
FAIL SAFE POSITION: **FS** available for valves type 'J' with spools type Z

DSE5 EXTERNAL DRAIN **Y** mounting surface ISO 4401-05-05-0-05 - **L** mounting surface ISO 4401-05-06-0-05

ALTERNATIVE SURFACE FINISHES: **W7** Zinc-Nickel (salt spray resistance up to 600 hours) upon request.

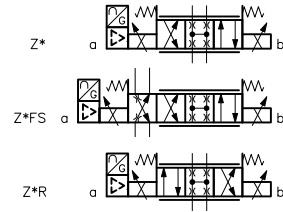
## CZ\*

OVERLAP JUMP  
for DSE\*G only



## Z\*

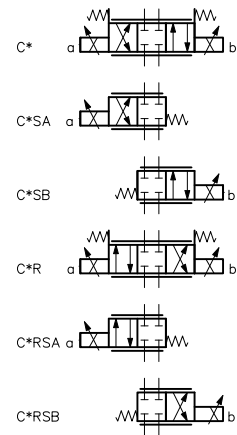
ZERO OVERLAP  
for DSE\*J only



## C\*

CLOSED CENTRE

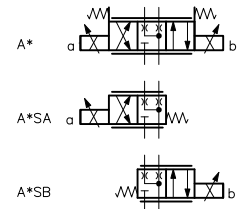
\*SB scheme available only on valves without on-board electronics.



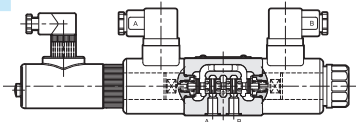
## A\*

OPEN CENTRE

\*SB scheme available on low cost and standard valves only.



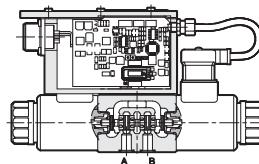
## F



### POSITION TRANSDUCER

LVDT connection: 4 pin M12 PG7  
supply: 18 - 36 V DC  
output: 2 - 10 V

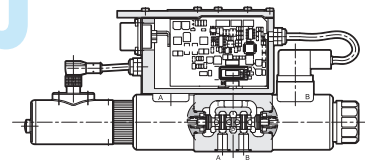
## G



### ON-BOARD ELECTRONICS

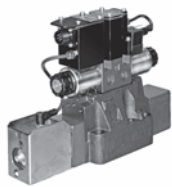
main connection 24V DC, 6 pin +PE  
REF. SIGNAL: **E0** voltage,  $\pm 10V$  or 0 - 10V  
**E1** current, 4 - 20 mA  
PIN C: **A** external enable  
**B** internal enable  
**C** 0V monitor

## J



### OBE + POSITION TRANSDUCER

main connection 24V DC, 6 pin +PE  
REF. SIGNAL: **E0** voltage,  $\pm 10V$  or 0 - 10V  
**E1** current, 4 - 20 mA  
PIN C: **A** external enable  
**B** internal enable  
**C** 0V monitor



MODEL CODE	DSPE5	DSPE5G	DSPE7	DSPE7G	DSPE8	DSPE8G	DSPE10	DSPE10G
CATALOGUE	83 310	83 320	83 310	83 320	83 310	83 320	83 310	83 320
SIZE (ND)	10		16		25		32	
CETOP	P05, R05		07		08		10	
ISO 4401	05		07		08		10	
TYPE	pilot operated, for open loop							
	standard	with OBE	standard	with OBE	standard	with OBE	standard	with OBE
p max	350 bar							
Q max	180 l/min		450 l/min		800 l/min		1600 l/min	

### PERFORMANCES

hysteresis	< 4 %	< 2 %	< 4 %	< 2 %	< 4 %	< 2 %	< 4 %	< 2 %
response time 0 → 100 %	50 ms	30 ms	80 ms	50 ms	100 ms	70 ms	200 ms	100 ms
response time 100 → 0 %	40 ms	15 ms	50 ms	25 ms	70 ms	55 ms	120 ms	150 ms

### NOMINAL FLOW at 10 bar Δp

80, 80/40	■	■						
100			■	■				
150, 150/75			■	■				
200					■	■		
300, 300/150					■	■		
350							■	■
500, 500/250							■	■

MODEL CODE	DSPE5J	DSPE7J	DSPE8J	DSPE10J	DSPE11J
CATALOGUE	83 330				
SIZE (ND)	10	16	25	32	35
CETOP	P05, R05	07	08	10	10+
ISO 4401	05	07	08	10	10+
TYPE	closed loop with LVDT + OBE				
p max	350 bar				
Q max	180 l/min	450 l/min	800 l/min	1600 l/min	2800 l/min

### PERFORMANCES

hysteresis	< 0,5 %				
response time 0 → 100 %	40 ms	35 ms	45 ms	100 ms	100 ms
response time 100 → 0 %	35 ms	30 ms	35 ms	140 ms	140 ms

### NOMINAL FLOW AT 10 BAR ΔP

80, 80/40	■				
100		■			
150, 150/75		■			
200			■		
300, 300/150			■		
350				■	
500, 500/250				■	
800					■

### FEATURES ++

EXPLOSION PROOF **DS(P)E\*K\*** see datasheet 83 510

PILOT / DRAIN **I** internal - **Z** internal pilot with pressure reducing - **E** external (always verify application cases on valve datasheet)

MANUAL OVERRIDE: **CM** boot - **CS** screw (on DSPE\* only) - **CK1** knob (on DSPE\* only)

ALTERNATIVE SURFACE FINISHES: **W7** Zinc-Nickel (salt spray resistance up to 600 hours) upon request.

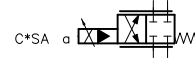
DSPE11J is the high flow version of DSPE10J, with oversized ports.

## C\*

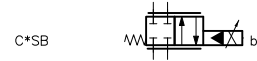
CLOSED CENTRE



\*SA scheme available on DSPE5G, DSPE7G, DSPE5J and DSPE7J



\*SB scheme available on DSPE8G, DSPE8J and DSPE10G

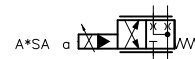


## A\*

OPEN CENTRE



\*SA scheme available on DSPE5G, DSPE7G, DSPE5J and DSPE7J



\*SB scheme available on DSPE8G, DSPE8J and DSPE10G



## R\*

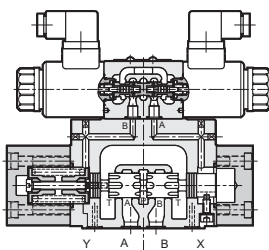
REGENERATIVE



not available on size 05



## E

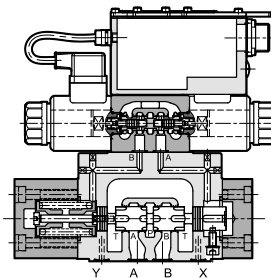


### ■ PROPORTIONAL CONTROL

COIL CONNECTION: **K1** DIN 43650 style

POWER SUPPLY: **D12** 12V DC - **D24** 24V DC.

## G



### ■ ON-BOARD ELECTRONICS

main connection 24V DC, 6 pin +PE

REF. SIGNAL: **E0** voltage, ±10V or 0 - 10V

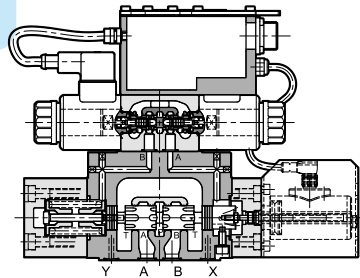
**E1** current, 4 - 20 mA

PIN C: **A** external enable

**B** internal enable

**C** 0V monitor

## J



### ■ OBE + POSITION TRANSDUCER

main connection 24V DC, 6 pin +PE

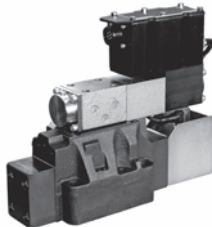
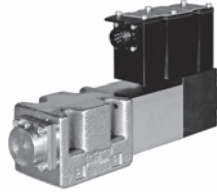
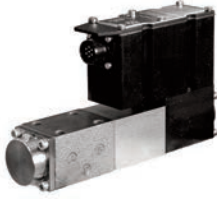
REF. SIGNAL: **E0** voltage, ±10V or 0 - 10V

**E1** current, 4 - 20 mA

PIN C: **A** external enable

**B** internal enable

**C** 0V monitor



MODEL CODE	DXE3J	DXE5J
CATALOGUE	<b>85 120</b>	<b>85 220</b>
SIZE (ND)	6	10
CETOP	03	05
ISO 4401	4401-03	4401-05
TYPE	high response servo-proportional valves	
p max	350 bar	350 bar
Q max	70 l/min	100 l/min

#### PERFORMANCES

hysteresis	< 0,2%	< 0,2%
response time 0 → 100 %	< 10 ms	< 20 ms
frequency response (± 10%) amplitude at -3dB phase lag at 90°	85 Hz 100 Hz	30 Hz 80 Hz

#### NOMINAL FLOW AT Δp 70 bar

1, 2, 5	■	
10	■	
20	■	
40	■	
60		■
100		■

#### FEATURES ++

FAIL SAFE TYPE **F1** closed centre - **F3** open centre - **FC** cross position  
SURFACE FINISH: **W7** Zinc-Nickel (salt spray resistance up to 600 hours)

MODEL CODE	DXRE5RJ	DXRE7J	DXRE8J	DXRE10J	DXRE11J
CATALOGUE	<b>85 330</b>				
SIZE (ND)	10	16	25	32	35
CETOP	R05	07	08	10	10+
ISO 4401	4401-05-05	4401-07	4401-08	4401-10	4401-10+
TYPE	pilot operated servo proportional valves				
p max	350	350	350	350	350
Q max	180	450	850	1600	3500

#### PERFORMANCES FOR ZERO OVERLAP SPOOLS

response time 0 → 100 %	25	25	30	50	50
frequency response (± 10%) amplitude at -3dB phase lag at 90°	40 60	35 50	30 45	20 35	20 35
100	■				
120		■			
220		■			
250			■		
400			■		
800				■	
1000					■

#### PERFORMANCES FOR POSITIVE OVERLAP SPOOLS

hysteresis	< 0,1 %				
response time 0 → 100 %	20 ms	20 ms	30 ms	120 ms	120 ms

#### FEATURES ++

PILOT / DRAIN: **I** internal - **E** external (always verify application cases on valve datasheet)  
ALTERNATIVE SURFACE FINISH: **W7** Zinc-nickel (salt spray resistance up to 600 hours) upon request.

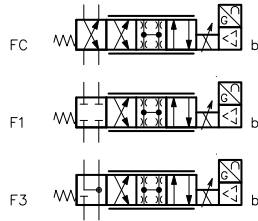
DXRE11J is the high flow version of DXRE10J with oversized ports.



## DIRECT OPERATED

### LZ

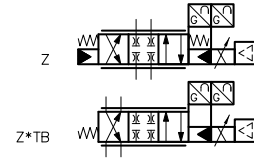
ZERO OVERLAP  
with linear flow  
characteristic



## PILOT OPERATED

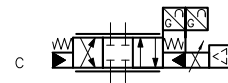
### Z\*

ZERO OVERLAP  
with linear flow  
characteristic



### C\*

CLOSED CENTRE  
with linear flow  
characteristic

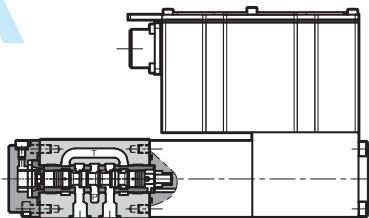


### A\*

OPEN CENTRE  
with linear flow  
characteristic



## X

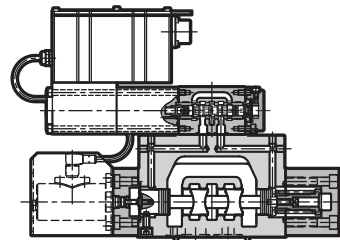


### SERVO PROPORTIONAL OBE + POSITION TRANSDUCER

main connection 24V DC, 6 pin +PE

REF. SIGNAL: **E0** voltage,  $\pm 10V$   
**E1** current, 4 - 20 mA  
PIN C: **A** external enable  
**B** internal enable  
**C** 0V monitor

## XR



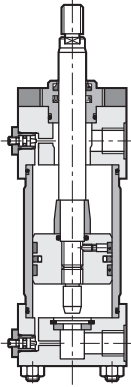
### SERVO PROPORTIONAL OBE + POSITION TRANSDUCERS

main connection 24V DC, 6 pin +PE

REF. SIGNAL: **E0** voltage,  $\pm 10V$   
**E1** current, 4 - 20 mA  
PIN C: **A** external enable  
**B** internal enable  
**C** 0V monitor

# ACTUATORS

## ISO 6020-2 CYLINDERS



MODEL CODE **HC2**  
 CATALOGUE **71 000**

TYPE	Hydraulic actuators according to ISO 6020-2
p max continuous	160 bar
p max operating	210 bar
p peak	250 bar
stroke	max 5000 mm
speed	standard 0,5 m/s low friction 15 m/s

### FEATURES

SINGLE / DOUBLE ROD available  
**HCK2** ex-proof version available, see catalogue.

MOUNTING STYLE: **A** flange, front - **B** flange, rear - **C** clevis, female - **D** clevis, male - **F** spheric swivel - **G** feet - **H** swinging, front - **L** swinging, mid - **N** swinging, rear - **P** tie rods, front - **Q** tie rods, back - **R** tie rods, front and back - **T** threaded holes, front - **U** threaded holes, rear

SENSORS: As option. **FP** PNP proximity sensor - **FMR** reed magnetic sensors - **FMH** Hall effect magnetic sensors

ALTERNATIVE ROD THREAD: **W** female - **X** male, light - **Y** female, light

SEALS: **K** standard nitrile+polyurethane - **M** low friction nitrile+PFTE - **V** high temperature / viton+PFTE

CUSHIONING: **0** without - **1** front - **2** back - **3** both front and back

BREATHERS: **0** without - **S** with, both front and back

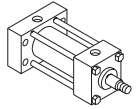
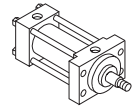
CONNECTIONS POSITION: four position available, see related datasheet.

### ROD / BORE AVAILABILITY

		BORE (mm)											
		25	32	40	50	63	80	100	125	160	200		
ROD diameter (mm)	12	■											
	14		■										
	18	■	■	■									
	22		■	■	■								
	28			■	■	■							
	36				■	■	■						
	45					■	■	■					
	56						■	■	■				
	70							■	■	■			
	90								■	■	■		
	110									■	■		
	140											■	

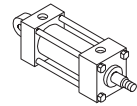
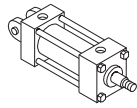
### A B

flanged  
 ME5  
 ME6



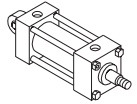
### C D

clevis  
 MP1  
 MP3



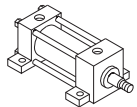
### F

swivel joint  
 MP5



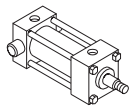
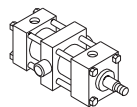
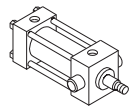
### G

feet  
 MS2



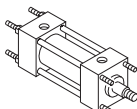
### H L N

swinging  
 MT1  
 MT2  
 MT4



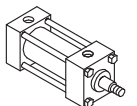
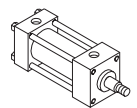
### P Q R

tie rods  
 MX1  
 MX2  
 MX3



### T U

threaded holes  
 MX5  
 MX6

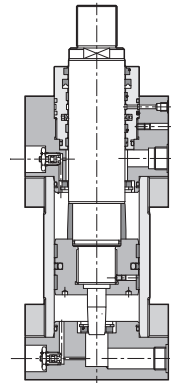




MODEL CODE **HC3**

CATALOGUE **71 200**

TYPE	Hydraulic actuators according to ISO 6022
p max continuous	250 bar
p max operating	320 bar
stroke	max 5000 mm
speed	standard 0,5 m/s low friction 15 m/s



### FEATURES

SINGLE / DOUBLE ROD available

**HCK3** ex-proof version available, see catalogue.

MOUNTING STYLE: **A** flange, front - **B** flange, rear - **D** clevis, male -

**F** spheric swivel - **L** swinging, mid

SENSORS: As option. **FP** PNP proximity sensor - **FMR** reed magnetic sensors - **FMH** Hall effect magnetic sensors

ALTERNATIVE ROD THREAD: **W** female

SEALS: **K** standard nitrile+polyurethane - **M** low friction nitrile+PFTE -

**V** high temperature / viton+PFTE

CUSHIONING: **0** without - **1** front - **2** back - **3** both front and back

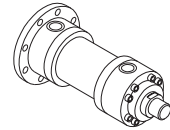
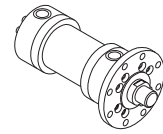
BREATHERS: **0** without - **S** with, both front and back

DRAIN: **0** without - **E** external, with port on the front end

CONNECTIONS POSITION: four position available, see related datasheet.

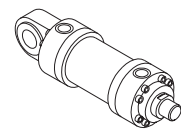
**A B**

flanged  
MF3  
MF4



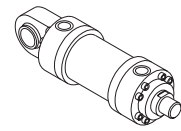
**D**

clevis  
MP3



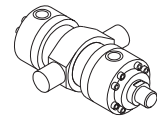
**F**

swivel joint  
MP5



**L**

swinging  
MT4

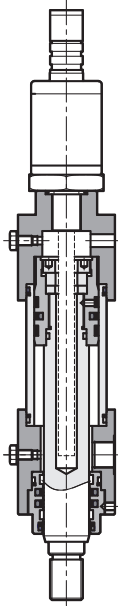


### ROD / BORE AVAILABILITY

(\*) bores not foreseen in the ISO 6022 standard

		BORE (mm)														
		50	63	80	100	125	140*	160	180*	200	250	320	400			
ROD diameter (mm)	32	36	■													
	40	45		■												
	50	56			■											
	63	70				■										
	80	90					■									
	90	100						■								
	100	110							■							
	110	125								■						
	125	140									■					
	160	180										■				
200	220											■				
250	280												■			

# ACTUATORS SERVOCYLINDERS



MODEL CODE	HCX*	HCX3*
CATALOGUE	71 100	71 300
TYPE	Servocylinders	
	according to ISO 6020-2	according to ISO 6022
p max continuous	160 bar	250 bar
p max operating	210 bar	320 bar
max stroke	5000 mm	5000 mm
max speed	standard 0,5 m/s	low friction 15 m/s
bore	Ø40 mm to Ø200 mm	Ø50 mm to Ø400 mm
rod	Ø22 mm to Ø140 mm	Ø32 mm to Ø280 mm

### ■ FEATURES

SINGLE / DOUBLE ROD available

MOUNTING STYLE: **A** flange, front - **G** feet, front - **H** swinging, front - **L** swinging, mid - **N** swinging, rear - **P** tie rods, front - **Q** tie rods, back

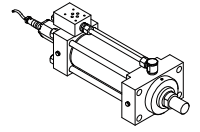
SENSORS: Wide range of transducers available, **M3** 0 ÷ 10 V - **M3A** ±10 V  
**M2** 4 ÷ 20 mA - **M8** 20 ÷ 4 mA - **M6** CAN-open - **M1** SSI, digital  
**MP** ProfiBus. Further types upon request.

VALVE MOUNTING SURFACE: **04** ISO 10372 (servovalves) - **3** ISO 4401-03  
**5** 4401-05 - **9** custom

SEALS: low friction nitrile+PFTE or **V** high temperature viton+PFTE

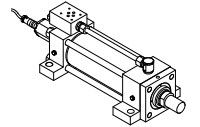
## A

flanged  
ME5



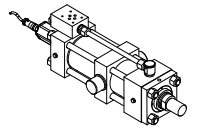
## G

feet  
MS2



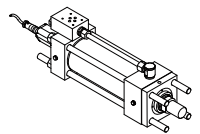
## H L N

swinging  
MT1  
MT2  
MT4



## P Q R

tie rods  
MX1  
MX2  
MX3



### ■ ROD / BORE AVAILABILITY

		BORE (mm)							
		40	50	63	80	100	125	160	200
ROD diameter (mm)	22	■	■						
	28	■	■	■					
	36		■	■	■				
	45			■	■	■			
	56				■	■	■		
	70					■	■	■	
	90						■	■	■
	110							■	■
	140								■



MODEL CODE	EDC	EDM-M	EDM-J	EWM-A-SV	EWM-A-PV
CATALOGUE	<b>89 120</b>	<b>89 251</b>	<b>89 255</b>	<b>89 610</b>	<b>89 620</b>
TYPE	single amplifier	for proportional valves in open loop	for proportional valves in closed loop without OBE	for servovalves	for proportional valves in open loop
MOUNTING	on-board	rail mounting		rail mounting	
configuration	by hands/software	software		by hands	software
IP grade	IP 65/67	IP 20		IP 20	
power supply	10 - 30 V DC	9 - 36 V DC	24 V DC	18 - 30 V DC	12 - 30 V DC
reference signal	0 ÷ 10 V 0 ÷ 5 V 4 ÷ 20 mA	0 ÷ 10 V ± 10 V 4 ÷ 20 mA	± 10 V 4 ÷ 20 mA	± 10 V	0 ÷ 10 V; ± 10 V 4 ÷ 20 mA 8 digital binary

#### ■ EDC

MAX CURRENT : **1** 860 mA - **2** 1200 mA - **3** 1600 mA - **4** 1880 mA - **5** 2600 mA  
 PWM: **1** 100 Hz - **2** 200 Hz - **3** 300 Hz - **4** 400 Hz - **5** 500 Hz

#### ■ EDM-M

VERSION: **1** for single solenoid valves - **2** for dual solenoid valves - **3** 2 channels - independent control of 2 solenoids  
 MAX CURRENT : **1** 860 mA - **2** 1200 mA - **3** 1600 mA - **4** 1880 mA - **5** 2600 mA; PWM: **1** 100 Hz - **2** 200 Hz - **3** 300 Hz - **4** 400 Hz

#### ■ EDM-J

For valves type F. Each card is set and combined with its valve in factory, with univocal serial number.

#### ■ EWM-A-SV

CONFIGURATION: DIL switches and trimmers inside the casing. 5 DIL switches allow to set a current value from 0 to 200 mA, with increments of 10 mA. (10, 20, 30 ... etc.).

#### ■ EWM-A-PV

CARD FUNCTIONS: To be set via software: **A-PV** analogue ± 10V or 4 ÷ 20 mA (one channel, 2 solenoids) - **2A-PV** analogue 0 ÷ 10V or 4 ÷ 20 mA (two independent channels) - **D-RI** digital, 8 pre-set values, selectable by 3 digital inputs (8 binary targets). For both single or dual solenoids proportional valve either.



MODEL CODE	EWM-S-AA	EWM-ST-AA	EWM-S-AD	EWM-SP-DAD	EWM-SP-DAD
CATALOGUE	<b>89 410</b>	<b>89 411</b>	<b>89 420</b>	<b>89 440</b>	<b>89 445</b>
TYPE	card for closed loop systems				
CONTROL	position controller			position, pressure, both	
MOUNTING	rail mounting				
IP grade	IP 20				
power supply	12 - 30V DC	12 - 30V DC	24 - 30 V DC	24 - 30 V DC	24 - 30 V DC
reference signal	analogue	analogue	analogue	Profibus DP	ProfiNet / EtherCat

#### OUTPUT

<b>E</b>	± 10 V differential 4 ÷ 20 mA	4 ÷ 20 mA	± 10 V differential 4 ÷ 20 mA	± 10 V differential 4 ÷ 20 mA	± 10 V differential 4 ÷ 20 mA
<b>M*</b>	-	500 ÷ 2600 mA	-	-	-

#### FEEDBACK

voltage 0 ÷ 10	■	■	■	■	■
current 4 ÷ 20 mA	■	■	■	■	■
digital, SSI			■	■	■

#### ■ EWM-S-AA / EWM-ST-AA

Position controller for systems with analogue sensor. The EWM-ST-AA has been designed for steam turbine applications, with dedicated parameters.

#### ■ EWM-S-AD

Position controller for systems with digital position feedback, it can work with analogue also.

#### ■ EWM-SP-DAD

Position controller for closed loop systems for position, pressure or both position and pressure control. It works with a digital sensor for positioning, and one or two analogue sensors for pressure sensing. Embedded interface for Profibus DP or ProfiNet communication.

All these modules have to be programmed via software. USB port on front panel. Free download of the software EWMPC and PLC configuration files from our site. Sampling time of the control loop: 1 ms.



MODEL CODE	EWM-MS-AA	EWM-2SS-DAD	EWM-2SS-DAD
CATALOGUE	89 450	89 470	89 475
TYPE	card for closed loop systems		
CONTROL	synchro 2 / 6 axes	synchro 2 axes	synchro 2 axes
MOUNTING	rail mounting		
IP grade	IP 20		
power supply	12 - 30 V DC	24 V DC	24 V DC
reference signal	0 ÷ 10 V 4 ÷ 20 mA	Profibus DP	ProfiNet / EtherCat

#### OUTPUT

E	± 10 V differential 4 ÷ 20 mA	± 10 V differential 4 ÷ 20 mA	± 10 V differential 4 ÷ 20 mA
M2	500 ÷ 2600 mA	-	-

#### FEEDBACK

voltage 0 ÷ 10	■	■	■
current 4 ÷ 20 mA	■	■	■
digital, SSI		■	■

#### ■ EWM-MS-AA

FUNCTIONS: MASTER/MASTER position control (2 axes); MASTER/SLAVE position control, for up 6 axes. If the synchronisation controller is active, it overrides the position control process. INDEPENDENT POSITIONING by separate commands position. One card per axis to be driven is needed.

#### ■ EWM-2SS-DAD SYSTEM

2 axes synchronized positioning via Fieldbus (Profibus, ProfiNet, EtherCat). Fieldbus card embedded. MASTER/SLAVE or MASTER/MASTER. Motion profile (speed and position) via Fieldbus. One card per system (2 axes) needed.

All these modules have to be programmed via software. USB port on front panel. Free download of the software EWMPC and .GSD file from our site.



MODEL CODE	EWM-P-AA	EWM-PQ-AA
CATALOGUE	89 500	89 550
TYPE	card for closed loop systems	
CONTROL	pressure	pressure + flow
MOUNTING	rail mounting	
IP grade	IP20	
power supply	12 - 30 V DC	
reference / p signal	0 ÷ 10 V 4 ÷ 20 mA	0 ÷ 10 V 4 ÷ 20 mA
Q input	-	±10 V 4 ÷ 20 mA

#### OUTPUT

E	-	±10 V differential 4 ÷ 20 mA
M1	500 ÷ 2600 mA	-

#### FEEDBACK

voltage 0 ÷ 10	■	■
current 4 ÷ 20 mA	■	■

#### ■ EWM-P-AA

For proportional pressure reducing and pressure relief valves. The power amplifier is embedded. The reference signal is transferred directly to the pressure valve and the closed loop compensates just the linearity failures.

#### ■ EWM-PQ-AA

For zero-overlap control valves. The p/Q controller automatically switches between flow and pressure control modes to assure the set point limits of the differential pressures has not to exceed.

All these modules have to be programmed via software. USB port on front panel. Free download of the EWMPC software from our site. Sampling time of the control loop: 1 ms.



MODEL CODE	EDCPC	LINPC-USB
CODE	<b>3898301001</b>	<b>89 850</b>
TYPE	software kit	test device
for	ECL, ECF, EDC	proportional valves with LIN-bus interface type G, J, X series 20, 30 and 31

**■ EDCPC**

The kit is made of software CD, drivers, cable USB/serial port and an adaptor with serial port that should be plugged on the amplifier.

**■ LINPC-USB**

The kit contains a test device with embedded connection cable 7 pin and the USB cable for connection to the PC. The dedicated software of each valve series is available for free download from our web site. No additional power supply is required: the device uses the supply source from the 7 pin system cable.

MODEL CODE	EWMPC/20	EBC
TYPE	free-download software	
for	EWM cards series 20 proportional valves	proportional valves with LIN-bus interface type G, J, X series 30 and 31 EDM-M, EDM-J cards series 30

**■ EWMPC**

Software for parameterization of EWM series 20 cards. Compliant for OS Windows 7, 8 and 10. Card connection via USB port, with USB 2.0 cable A – B (standard USB printer cable).

**■ EBC**

Software for parameterization and diagnostic of:

- Diplomatic proportional valves with LIN-bus interface type G, J and X, series 30 and 31. To be combined with LINPC tool.
- Diplomatic EDM-M and EDM-J cards, series 30.

Compliant for OS Windows 7, 8 and 10.

Card connection via USB port, with USB 2.0 cable A – micro B.



MODEL CODE	PM RQ3*	PM RQ5*	PM RQ7*	PM RQA5*	PM SZ3*	PM SZ5*
CATALOGUE	51 000					
PATTERN	ISO 6264-06	ISO 6264-08	ISO 6264-10	-	ISO 5781-06	ISO 5781-08
TYPE	for pressure valves - ports on rear					
p max	350 bar	350 bar	350 bar	350 bar	320 bar	320 bar
<b>PORT THREAD</b>						
P, E	1/2" BSP	1" BSP	1 1/4" BSP	3/4" BSP	1/2" BSP	1" BSP
T	3/4" BSP	1/4" BSP	1 1/4" BSP	3/4" BSP		
X		1/4" BSP		-	1/4" BSP	
Y	-	-	-	-	1/4" BSP	
U	-	-	-	3/4" BSP	1/2" BSP	1" BSP

MODEL CODE	PM RPC1*	PM RPC2*	PM RPCQ2*	PM RPC3*	PM RPCQ3*
CATALOGUE	51 000				
PATTERN	ISO 6263-03	ISO 6263-06-05	ISO 6263-06-07	ISO 6263-07-09	ISO 6263-07-11
TYPE	for flow control valves				
p max	250 bar	320 bar	320 bar	250 bar	250 bar
<b>PORT THREAD</b>					
A, B	3/8" BSP	-			
E, U	-	1/2" BSP	1/2" BSP	1" BSP	1" BSP
T	-	-	1/2" BSP		1" BSP
X			1/4" BSP		1/4" BSP
<b>PORT POSITION</b>					
rear	■	■	■	■	■
side	■				



MODEL CODE	PM MD	PM D4	PM E4	PM E07	PM E5	
CATALOGUE	51 000					
PATTERN	ISO 4401-03	ISO 4401-05	CETOP P05	ISO 4401-07	ISO 4401-08	
TYPE	for directional valves					
p max	350 bar	320 bar	320 bar	350 bar	350 bar	
<b>PORT THREAD</b>						
A, B, P, T	3/8" BSP	3/8" BSP	1/2" BSP	3/4" BSP	1" BSP	1 1/2" BSP
X, Y	-	-	-	1/4" BSP	1/4" BSP	1/4" BSP
<b>PORT POSITION</b>						
rear	■	■		■	■	
side	■		■	■	■	■



MODEL CODE	PE-MD	PE- C/PA	PE- C/PB	PE-D4/M	PC-D4
CATALOGUE	59 000				
SIZE ISO 4401	03	03	03	05	05 to 03
TYPE	blanking	cross PA /BT	cross PB/AT	blanking	conversion
p max	350 bar				





MODEL CODE	P2D	P2T	P4D-D*	P4D*
CATALOGUE	52 000		53 000	
FOR SIZE	ISO 4401-03		ISO 4401-03	ISO 4401-05
TYPE	modular subplates			
Q max	50 l/min		100 l/min	100 l/min
<b>PORT SIZE</b>				
P, A, B, T low	3/8" BSP		see options	
T up	1/2" BSP			
material	cast iron			
stations	1	2	1	1

#### ■ P2\* FEATURES ++

OPTIONS: **F** threaded ports, additional T port - **I** intermediate type with threaded bores and additional T port - **Z** designed for installation of an ISO 4401-03 pressure reducing valve - **M\*** built-in pressure relief valve

#### ■ P4\* FEATURES ++

**D3** mounting surface ISO 4401-03 (CETOP 03) , A and B side ports 3/8" BSP - **D3P** mounting surface ISO 4401-03 (CETOP 03) and A and B rear ports 1/2" BSP - **F** mounting surface ISO 4401-05 (CETOP 05) , A and B side ports 1/2" BSP - **P** mounting surface ISO 4401-05 (CETOP 05) and A and B rear ports 3/8" BSP - **M\*** built-in pressure relief valve (4 ranges available)



MODEL CODE	P2A*	P2X*
CATALOGUE	52 100	52 110
FOR SIZE	ISO 4401-03	
TYPE	multi-station manifold	
PORTS	side	rear
p max	210 bar	350 bar
Q max	50 l/min	100 l/min
<b>PORT THREAD</b>		
A, B	3/8" BSP	1/2" BSP
P, T	1/2" BSP	1/2" BSP
material	aluminium	cast iron
stations	2 to 8	2, 4 or 6

#### ■ P2X\* FEATURES ++

**M** with seat for pressure relief cartridge valve. See related datasheet for details.



MODEL CODE	FSI	FST	FPH	FPM	FPHM	FRT	FRC
CATALOGUE	95 100	95 110	95 210	95 220	95 230	95 150	95 160
TYPE	suction filters		pressure filters			return filters	
mounting	submerged	flanged	online		subplate	above reservoir flanged	above reservoir online
differential p max	1 bar	1 bar	20 bar 210 bar (cart. 5 µm)	21 bar	210 bar	3 bar	3 bar
working pressure	-	-	420 bar	210 bar	315 bar	3 bar	7 bar

### FILTRATION

metal wire mesh 90 µm	■	■	-				
fiber 05 µm	-	-	■	■	■		
fiber 10 µm	-	-	■	■	■	■	
fiber 25 µm	-	-	■	■	■	■	■
paper 10 µm	-	-				■	■
paper 25 µm	-	-					■

### AVAILABLE SIZES / FLOWRATE RANGE (l/min)

ISO 4401-03	-	-	-	-	12 - 16	-	-
ISO 4401-05	-	-	-	-	22 - 28	-	-
3/8" BSP	9	-	-	-	-	-	-
1/2" BSP	14	-	10 - 33	25 - 60	-	18 - 30	-
3/4" BSP	25	-	19 - 65	35 - 80	-	50 - 85	65 - 75
1" BSP	45	-	40 - 105	40 - 100	-	65 - 130	-
1 1/4" BSP	75	70	88 - 230	-	-	150 - 210	-
1 1/2" BSP	100	-	120 - 320	-	-	160 - 290	180 - 200
2" BSP	160	-	-	-	-	280 - 430	-
2 1/2" BSP	250	-	-	-	-	-	-
3" BSP	350	-	-	-	-	-	-
2 1/2" SAE		100					
3" SAE		200					
4" SAE	-	300	-	-	-	-	-

### ACCESSORIES

Clogging indicator, visual		VS/10	VPM/10	VPM/10	VM/10	VR/10	VR/10
Clogging indicator, electric		ES/10	-	-	-	ER/11	ER/11
Clogging indicator, visual+electric		-	EPM/10	EPM/10	EM/10	-	-
Filter element (spare part)		FSTE	FPHE	FPME	FPHME	FRTE	FRCE

### FEATURES++

**BYPASS VALVE:** FRT, FRC pressure opening 1,7 bar. FPH, FPM: **O** without - **B** with (Bypass valve not available with cartridge fiber 05 µm).

**FILTER ELEMENT:** Available as spare parts too for all filters. FRC, FPM : **S** standard - **L** long lasting



MODEL CODE	M63*R	M63*PF
CATALOGUE	91 000	
TYPE	pressure gauges - according to EN 837-1	
mounting	1/4" BSP radial connection	1/4" BSP flange connection
p max	end scale value for short period	

#### ■ FEATURES++

GAUGE SCALE: **006** 0 ÷ 6 bar - **010** 0 ÷ 10 bar - **016** 0 ÷ 16 bar - **025** 0 ÷ 25 bar - **060** 0 ÷ 60 bar - **100** 0 ÷ 100 bar  
**160** 0 ÷ 160 bar - **250** 0 ÷ 250 bar - **400** 0 ÷ 400 bar.

**PF** Flange connection available from 060 to 400 only.



MODEL CODE	PS*2	PS*4	PS*6	PS*8
CATALOGUE	91 100			
TYPE	pressure switch, piston			
p max	350 bar		650 bar	
p adjustment range	3 - 35 bar	6 - 140 bar	10 - 350 bar	20 - 630 bar

#### ■ FEATURES++

MOUNTING **P** ISO 4401-03 subplate - **T** threaded port 1/4" BSP



MODEL CODE	PTH			
CATALOGUE	92 100			
TYPE	pressure transmitters			
p nom	40 bar	100 bar	250 bar	400 bar
p max	120 bar	300 bar	750 bar	1000 bar
p burst	280 bar	500 bar	1000 bar	2000 bar
hysteresis	± 0.2% of nominal pressure			
accuracy	0.5% of nominal pressure			
TEB total error band	± 0.5% of nominal pressure			

#### ■ FEATURES++

HYDRAULIC CONNECTION: threaded port 1/4" BSP with seal (DIN 3869)

OUTPUT SIGNAL: **E1** current 4 ÷ 20 mA - **E0** voltage 0 ÷ 10 V;

upon request: **E2** voltage 0 ÷ 5 V - **E5** voltage 0.5 ÷ 4.5 V ratiometric

ELECTRICAL CONNECTION: **K10** mini DIN 43650 - **K12** M12 - 5 pin

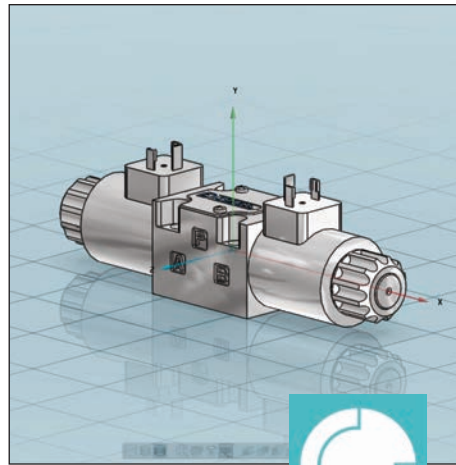
## LOOKING FOR CAD MODELS ?

3D & 2D CAD models of most of our products are available on line on PARTCommunity website.

To download a file you have to create an account. This action is required only once and is completely **free of charge**.

Once logged in, a **configurator** will guide you through the selection of the right version of the component you are interested in.

You can **download** for SolidWorks, Solid Edge, Autodesk Inventor, Autocad, CATIA, NX, Creo, and many others CAD systems.



Visit our 3D catalogue by scanning this QR code with your smartphone



or on the web, at:

<http://duplomatic.partcommunity.com>








# DIPLOMATIC GROUP

a global presence with production plants in 3 continents.





#### PRODUCTION PLANTS

-  Diplomatic MS (Italy)
-  Diplomatic Hydraulics Shanghai
-  Continental Hydraulics (U.S.A.)

#### SALES NETWORK

- Main Distributor

Our sales network covers 55 countries in the World. With a partner located at each corner of the Globe we can be always at your side.

The number of partners, distributors sales and assistance points is constantly growing.

To find your closest distributor please visit our website at:

[www.diplomatic.com/network](http://www.diplomatic.com/network)

or simply scan this QR code



Diplomatic MS SpA

via Mario Re Depaolini 24,  
20015 Parabiago (MI) Italy

Tel: +39 0331-895111

Fax: +39 0331-895319

[sales.exp@diplomatic.com](mailto:sales.exp@diplomatic.com)

[www.kianhydraulic.com](http://www.kianhydraulic.com)